



MPLA Newsletter

Volume 26, No. 4

Editor: Blaine H. Hall

February 1982



*This is the Place,
and
Now is the Time*



Annual Conference Issue

From your President...

"This is the place." Brigham Young said it over 130 years ago and it's the Place for MPLA librarians, the Great Salt Lake Valley and Salt Lake City. "Now is the time," May 5-7 to be specific. Make your plans now to attend the joint Mountain Plains Library Association, Utah Library Association conference.

Inside you will find the details of an excellent conference. Toni Carbo Bearman from the National Commission on Libraries and Information Science will be bringing the keynote address on library issues for the eighties. Later Thursday she will be talking about planning. We will need significant help in the crystal ball gazing required by inflation, recession, dwindling federal dollars, increasing needs for information and more and better communication technologies.

Dorothy Broderick, author and educator will address the conference twice on Friday. Ms. Broderick has been a librarian and leader in the area of young adult literature. Do you suppose she really understands teenagers?!

Our own award winning, Heather McNeil McQuarie will be presenting several programs about library services to the really young users. She joins several other MPLA experts to round out the program. Personally I'm going to have to flip a coin Wednesday to decide whether I can eliminate self defeating behavior or deal with my burned out life!



If you are a genealogy buff, do we have a deal for you! No, we couldn't wangle a tour of the granite vaults but how about the largest genealogy library in the world, the LDS Genealogical Library, and it's only across the plaza from the Hotel Utah.

OK, tired of meetings? Salt Lake City has many interesting things to see and do. Temple Square, home of the world famous Mormon Tabernacle Choir is close to the hotel. Eating is one of my favorite activities and Salt Lake City offers many fine restaurants. You healthy, outdoors types will be interested to know that there is always plenty of skiing snow left in May. Frankly, I expect to enjoy the spring flowers at lower elevations and maybe a golf course will be open.

MPLA/ULA will be experimenting with teleconferencing during the joint conference in May. Several audio-visual options are available ranging in

price from \$50 to \$8600 per hour. The Executive Board will decide on how much and in what format at its January meeting.

Remember the research paper contest the ULA Research Committee is sponsoring? If you aren't adequately inspired by professionalism - how about \$500 in prizes? The best papers will be presented at the conference in May. Manuscripts are due March 1st.

That's it for another letter from the President - I must admit I really enjoyed being able to say goodbye a year ago. Well, if not saying goodbye, traveling in the South Pacific and Southeast Asia. Ok, ok, I promise not to bring it up again! Consider yourselves lucky - most of you have never been bored by the 2000 slides.

Spring is coming despite the snow tonight - see you in Salt Lake City.

-Jane Kolbe-

"PERSONALIZED SUBSCRIPTION SERVICE"

Every customer is assigned an experienced "Home Office" representative. You correspond direct; any title needs, changes, cancellations or problems can be handled promptly by letter or phone. This makes your job easier and keeps you abreast of your subscription needs at all times.

With over 45 years experience, McGregor has built a reputation of prompt and courteous service on both domestic and international titles. We prepay subscriptions ahead of time.

Our customers, large and small, like the prompt attention we give them. We think you would too! Ask about McGregor's "Automatic Renewal" plan described in our new brochure. Write today for your free copy.

MCGREGOR
Magazine Agency

OUR 48th YEAR

MOUNT MORRIS, ILLINOIS 61054



This is the Place, and Now is the Time

MPLA/ULA Joint Conference
Salt Lake City, Utah
Hotel Utah
May 5-7, 1982

Tuesday, May 4

9:00 a.m. - 4:00 p.m. Salt Lake Public Library
Board Room

MPLA Executive Board Meeting

The library is at 205 East 5th South, two blocks east and five blocks south of Hotel Utah. Transportation will be provided courtesy the Utah State Library for those not into jogging. The meeting will be in the Board Room on the third floor.

Presiding: Jane Kolbe, president

7:00 - 8:30 p.m. University of Utah
Marriott Library Auditorium

ULA Leadership Conference

A meeting for all current and incoming association, section and round table officers and all committee chairs and members.

Presiding: Brenda Branyan, first vice president/president elect

Wednesday, May 5

8:00 a.m. - 5:00 p.m. Bonneville Foyer
Registration

9:00 a.m. - 5:00 p.m. LDS Church Office
Building, Room 2245

"All My Somedays" Comes to Utah

This workshop will show you how to use history, personal and family heritage, literature, and creative expression with patrons of all ages. Practical applications will include how to structure a program for different audiences and different settings, how to build a local resource and support network, and how to staff and fund a program. Participants should bring one to three family album photographs and/or items of memorabilia.

Speakers: Lethene Parks, personnel and planning officer, and Ronald Manheimer, director of Humanities Programs, Pierce County Library, Tacoma, Washington

Sponsor: ULA Public Library Section and Utah Endowment for the Humanities

Preregistration required by April 15. \$15 donation requested to defray costs.

Support MPLA Advertisers

9:00 a.m. - 5:00 p.m. President's Room

Ethics for Library Trustees and Administrators: Managing Personal, Organization and Community Values

The workshop will provide participants concrete guidance in handling the frequently conflicting domains of management ethics and personal and community values.

Speaker: Dr. F. Neil Brady, assistant professor, Graduate School of Management, Brigham Young University

Sponsors: ULA/MPLA Public Library sections and ULA Trustee Section

Preregistration required by April 15. No charge.

9:00 a.m. - 12:00 noon Junior Ballroom

Did You Really Know What You Were Getting Into? Coping with Burnout in the Helping Professions.

Speaker: Jerry Edelwich, assistant professor of Counselor Education, University of Bridgeport (Connecticut).

Sponsor: ULA New Perspectives Round Table and MPLA Junior Members Round Table.

Preregistration required by April 15. No Charge.

(This program will be repeated from 1:00 p.m. to 4:00 p.m.)

9:00 a.m. - 4:00 p.m. Gold Room

Eliminating Your Self-Defeating Behaviors (SDB's)

This workshop will help participants eliminate behaviors that interfere with success in personal and professional life.

Presenter: Dr. Jonathan M. Chamberlain, associate professor of Counselor Education, Department of Educational Psychology, Brigham Young University.

Minimum enrollment: 10

Cost: \$25. Includes SDB Workbook and refreshment breaks.

Preregistration required by April 15.

9:00 a.m. - 12:00 noon Jade Room

The Past, Present, and Future of Federal Government Publications

A one-hour talk on the Federal Depository Program and

related topics: Public access to government information; cooperation among depository libraries, including networking, cooperative acquisitions and interlibrary loans; cooperation between federal agencies and the GPO; budget cuts and the effect on public printing and dissemination; indexing of federal government information. The remainder of the time will focus on questions and discussions and small group talk sessions on PR in promoting document use in all types of libraries, acquisitions, state and local government agency publications, and reference service for government publications.

Speaker: Bernadine A. Hoduski, professional staff member for Library and Distribution Services, Joint Committee on Printing, U.S. Congress.

10:30 a.m. - 12:00 noon *Pioneer Room*

Sowing the Seeds of Power

This program on library service to rural America will cover the development of extended information services to rural communities and individuals.

Presenter: Thomas Hennen, director, Watonwan County Library, St. James, Minnesota, and "Farming Materials" columnist for **Booklist**.

Sponsor: ULA Continuing Education Committee supported by an MPLA State Conference Program Grant. (This program will be repeated from 1:00 p.m. - 3:00 p.m.)

12:00 noon - 1:00 p.m.

Lunch on Your Own

1:00 p.m. - 3:00 p.m. *Pioneer Room*

Sowing the Seeds of Power

Repeat of the morning workshop.

1:00 p.m. - 5:00 p.m. *Room 250*

Funding Alternatives for Libraries

The program will consist of an overview of funding alternatives available to libraries of different types, a funding problem to be solved through small group discussion, a panel of MPLA librarians presenting their experiences, and a final summary based upon the outcome of the group activities and panelist comments. Business meeting to follow.

Speakers: Patricia Senn Breivik, director, Auraria Libraries, Denver, Colorado

Sponsor: MPLA State Library Section

Presiding: Phyllis Baker, chair.

1:00 p.m. - 4:00 p.m. *Junior Ballroom*

Did You Really Know What You Were Getting Into? Coping with Burnout in the Helping Professions

Repeat of the morning workshop.

1:00 p.m. - 4:00 p.m. *Jade Room*

Country School Legacy

A presentation based on the MPLA-sponsored Country School Legacy Project directed by Andrew Gulliford in the MPLA states. This program will feature the film, "Country School Legacy," an exhibit of photographs of Utah rural schools of the past, and presentations on schools of both the 19th and 20th centuries.

Speakers: Scott Birkinshaw, Utah librarian for the Country School Legacy Project, and librarian from Weber State College, "Rural Schools of the 19th Century"; and Jessie Louise Embry, director, Oral History Project, Charles Redd Center for Western Studies, Brigham Young University and Utah Humanist on the Country School Legacy Project, "Rural Schools of the 20th Century."

Sponsor: MPLA/ULA Executive Boards

4:00 p.m. - 5:00 p.m. *Jade Room*

GODORT Business Meeting

Presiding: Julianne P. Hinz, chair

6:00 p.m. - Midnight *Main Street Entrance
Hotel Utah*

Evening in Park City

Buses (for a nominal fee) will take us up Parley's Canyon on a 30-mile trip to Park City, the famous old mining town turned ski mecca that is attracting skiers, tourists, and international jet setters to its many delights. Enjoy cocktails, dinner, dancing to Western music, sightseeing, Kimball Arts Center, shopping, and the good company of the finest people in the world—your fellow librarians.

Sponsor: MPLA JMRT and ULA New Perspectives Round Table.

Preregister on the preregistration form to help us determine how many to plan for. Final details on bus fares, etc., will be provided in your registration packet.

Thursday, May 6

7:00 a.m. - 9:00 a.m. *Bonneville Hall*
Exhibitor's Continental Breakfast

8:00 a.m. - 5:00 p.m. *Bonneville Foyer*
Registration

9:00 a.m. - 10:00 a.m.
Exhibits Closed

9:00 a.m. - 10:00 a.m. *Grand Ballroom II*
General Session

Keynote Address: "National Issues for the Eighties," Toni Carbo Bearman, executive director, National Commission on Libraries and Information Service.

Presiding: Jane Kolbe, MPLA president and Blaine H. Hall, ULA president

9:00 a.m. - 11:00 a.m. *Gold Room*
Bookmending: 30-Minute Quick Repairs

Techniques will be demonstrated that can be used in the small public library or school library to extend the life of a book. You will also learn the recommended mending supplies and ordering sources. Each participant will be required to purchase a mending kit (\$2.50). Kits will be available at the door.

Presenter: Celia Tomlin, director, American Fork (Utah) Public Library.

Support MPLA Advertisers

Sponsor: ULA Public Library Section
(This program will be repeated from 2:00 p.m. - 4:00 p.m.)

10:00 a.m. - 5:00 p.m.

Exhibits Open

10:00 a.m. - 11:00 a.m. *Grand Ballroom II*

ULA Business Meeting

Presiding: Blaine H. Hall, president

10:00 a.m. - 12:00 noon *LDS Church Office Building Lobby*

Energy Management: The Key to Cutting Utility Bills

Participants will tour the energy management system used in the LDS Church Office Building, a 28-floor tower located across the plaza from Hotel Utah. Special attention will be given to elements of the system applicable to existing library buildings to help lower utility costs.

Tour Guide: Bob Criger, manager of maintenance, LDS Church Office Building

Sponsor: ULA Public Library Section

Preregistration required by April 15. No charge.

11:00 a.m. - 12:00 noon *Grand Ballroom II*

MPLA Business Meeting

Presiding: Jane Kolbe, president

12:00 noon - 1:00 p.m.

Lunch on Your Own

1:00 p.m. - 2:00 p.m. *Grand Ballroom I*

ULA President's Program

A discussion session to receive input from any interested librarians to the third draft of the Utah State Plan for Libraries and Information Services.

Resource Person: Brenda Branyon, chair, Utah Advisory Committee on Library and Information Services.

1:00 p.m. - 4:00 p.m. *President's Room*

Microcomputers and Word Processors in Special Libraries

Speakers: Louise Pollard, librarian, Kennecott Minerals Company and vice-chair, ULA Special Libraries Section, "Introduction"; JoAn Segal, executive director, Bibliographic Center for Research, Denver, "Microcomputer Resources in the BCR Region"; Allan D. Pratt, professor, Graduate Library School, University of Arizona, Tucson, "CAL - Computer Assisted Librarianship."

Sponsor: ULA Special Libraries Section

1:00 - 4:30 p.m. *Grand Ballroom II*

Now Is the Time for Automation of Serials Control

Speakers: Dan Tonkery, UCLA Library, will explain the UCLA Serials Control System; John R. Taylor, Brigham Young University Library, will explain the BYU Serials Control System.

Panel Discussion: State of the Art of Automated Serials Control.

Bob Anderl, University of Nevada, Las Vegas, will discuss the Intermountain Union List of Serials (IMULS);

Support MPLA Advertisers

representatives of Faxon and Ebsco will explain their commercially available control systems; Roger Hanson, University of Utah Library, will discuss networking, storage, and cooperative acquisitions; K. Paul Jordan, Brigham Young University Library, will discuss the budgeting impact of serials acquisitions; and Patricia Culkin, University of Denver, and John Hunter, Auraria Libraries, Denver, will discuss internal control of serials.

Sponsor: MPLA/ULA Academic Library Sections

2:00 p.m. - 4:00 p.m. *Grand Ballroom I*

Planning for the Eighties

I. Library Planning at the National Level

Speaker: Toni Carbo Bearman, executive director, National Commission on Libraries and Information Science

II. Library Planning at the State Level

Speakers: Russell Davis, Utah State Librarian; Anne Marie Falsone, assistant commissioner, Colorado Office of Library Service; and Roderick G. Swartz, Washington State Librarian will review the basic elements of their state plans for libraries and report on progress in reaching established goals. Dr. Bearman will comment on the state plans and participate with the other speakers in a question and answer session.

2:00 p.m. - 4:00 p.m. *Jade Room*

Hoof 'n Mouth Storytelling

Speakers: Heather McNeil McQuarie, children's librarian at Bemis Public Library, Littleton, Colorado, and Kathy Buxton, children's librarian, George Amos Memorial Library, Gillette, Wyoming, will tell stories that invite audience participation, such as singing, clapping, and foot stomping. The program will be preceded by the business meeting for the MPLA Children's and School Section.

Sponsor: MPLA Children's and School Section.

2:00 p.m. - 4:00 p.m. *Gold Room*

Bookmending: 30-Minute Quick Repairs

Repeat of the 9:00 a.m. session.

3:30 p.m. - 5:00 p.m. *Pioneer Room*

Determining Technical Service Costs

Are you currently faced with having to develop budgets and projections for future expenditures? Do you plan to work in administration where making financial decisions will be mandatory? Or do you desire to become more familiar with the budgetary processes that are continually being discussed in every corner of the library and in the literature? The speakers will discuss the underlying principles for developing financial plans and how to apply these to technical services.

Speakers: Richard W. Denman, business manager, University of Utah Marriott Library and Leslie Manning, head, Technical Services, Kansas State University Library.

Sponsor: MPLA Technical Services Section

4:00 p.m. - 5:00 p.m. *Grand Ballroom II*

ULA Academic Section Business Meeting

Presiding: Ann Buttars, chair

4:00 p.m. - 5:00 p.m. *Gold Room*

ULA Special Library Section Business

Friday, May 7

Meeting

Presiding: Patricia Lynn Scott, chair

4:00 p.m. - 5:00 p.m. *President's Room*

MPLA Professional Development Grants Committee Business Meeting

Presiding: Doug Hindmarsh, chair

4:00 p.m. - 5:00 p.m. *Grand Ballroom I*

ULA Public Library Section Business Meeting

Presiding: Lynnda Wangsgard, chair

4:00 p.m. - 5:00 p.m. *Jade Room*

MPLA JMRT Business Meeting

Presiding: Paula Hock, chair

5:00 p.m. - 6:00 p.m. *Pioneer Room*

MPLA Technical Services Section Business Meeting

Presiding: Vee Friesner, chair

5:00 p.m. - 6:00 p.m. *Grand Ballroom II*

MPLA Public Library Section Business Meeting

Presiding: J. Dennis Day, chair

5:00 p.m. - 6:00 p.m. *Gold Room*

Utah Online Users Group Business Meeting

Presiding: David Ellefsen, president

5:00 p.m. - 6:00 p.m. *Jade Room*

MPLA Academic Library Section Business Meeting

Presiding: Lynnette Anderson, chair

5:00 p.m. - 6:00 p.m. *President's Room*

ULA New Perspectives Round Table Business Meeting

Presiding: Sally Patrick and Vicky York, co-chairs

5:00 p.m. - 6:00 p.m. *Minuet Room*

ULA Trustee Section Business Meeting

Presiding: Celia Archibald, chair

5:30 p.m. - 6:30 p.m. *LaFayette Mezzanine*

Cocktail Hour and Author Reception

6:30 p.m. - 9:00 p.m. *LaFayette Ballroom*

Banquet

Speaker: "Hooked on the American Urban Legend," Dr. Jan H. Brunvand, professor of English, University of Utah, and nationally prominent Utah folklorist.

Dinner Music by the Utah Valley String Quartet

Presiding: Jane Kolbe, MPLA president; Blaine H. Hall, ULA president

8:00 p.m. - 2:30 p.m.

Registration

Bonneville Foyer

8:00 a.m. - 12:00 noon

Exhibits Open

Bonneville Hall

8:00 a.m. - 9:00 a.m.

ULA School Section Business Meeting

Presiding: Mary S. Jensen, chair

Junior Ballroom

8:00 a.m. - 9:00 a.m.

MPLA Executive Board Breakfast and Business Meeting

Presiding: Jane Kolbe, president

Gold Room

8:00 a.m. - 9:00 a.m.

BYU Library School Reunion

Jade Room

9:00 a.m. - 11:30 a.m.

Library Outreach Programs

A how-to and demonstration program on outreach programs.

Speakers: Ellie Ingebretsen, director of development, Weber County Library (Utah), "Overview of Kinds of Outreach Programs"; Paula Jones, director, Springville Public Library (Utah), "How to Speak to Groups and Organizations"; Bill Higley, Weber County Library, "How to Do Readers' Theater."

Demonstration: Dorothy Harrison, Weber County Library; Bill Higley; Ellie Ingebretsen; Dr. Jeffrey Kahn, director, Weber County Library. This demonstration is based on Weber County Library's highly successful outreach readers theater program based on children's stories but enjoyed just as much by the many adult groups for whom it has been presented.

Sponsor: ULA Public Relations Committee

Jade Room

9:00 a.m. - 11:00 a.m.

Technology-Based Training/Education: State of the Art in the Use of Microcomputers and Videodiscs

Speaker: Mr. Darby V. Checketts, vice president, Training and Education Division of WICAT Systems.

Sponsor: ULA School and Public Library Sections

Junior Ballroom

9:00 a.m. - 11:00 a.m.

Library Research Forum

Winners of the ULA Research Committee Research Paper Contest will read their papers.

Sponsor: ULA Research Committee

Gold Room

9:00 a.m. - 12:00 noon

What's So Special About Special Collections? Genealogical and Local History Collections

The "Roots Phenomena" has caused increased pressure on all types of libraries. This session will assist librarians in starting, maintaining, and preserving

Support MPLA Advertisers

genealogical and local history collections and aid them in serving genealogists and local historians. A special information packet will be provided each participant.

Speakers: Patricia Lynn Scott, ULA Special Library Section chair, "Introduction"; Enid Thompson, consulting archivist and librarian, University of Denver, "Local History Collections"; Jayare Roberts, senior reference consultant, Genealogical Society of Utah, "Genealogical Collections."

Sponsor: ULA Special Library Section

10:00 a.m. - 12:00 noon *Grand Ballroom I*

Access, Excess, and Success: Library Services to Young Adults and Children

Speaker: Dorothy M. Broderick, associate professor, Graduate School of Library Service, University of Alabama.

Sponsor: MPLA/ULA Public Library sections and ULA School Section

11:00 a.m. - 12:00 noon *Junior Ballroom*

Interaction Between the Classroom Teacher and the Library Media Specialist

A slide presentation produced by 8th and 9th grade students emphasizing social violence followed by a discussion of cooperation between classroom teachers and media specialists on the subject of violence and what is appropriate for media centers on this subject.

Speakers: Dr. Robert Campbell, social studies teacher, and Laura Wilhelm, media specialist, University Laboratory School, University of Wyoming.

12:00 noon - 2:30 p.m. *Grand Ballroom II*

Awards Luncheon Presentation of MPLA and ULA Awards

Speaker: "Issues in Young Adult Publishing," Dorothy Broderick, founding editor of **Voice of Youth Advocates** and associate professor, Graduate School of Library Service, University of Alabama.

2:30 p.m. - 5:00 p.m. *Junior Ballroom*

Books for Tots: The Role of Reading in the Development of Children Age 3 Months to 5 Years

Speakers: Dr. Marilou R. Sorensen, associate professor, Department of Educational Studies, University of Utah, will discuss reading and the first years of life. Heather McNeil McQuarie, children's librarian, Bemis Public Library, Littleton, Colorado, will talk about books and programs for toddlers and families. Booklists will be provided and books available for browsing.

Sponsor: MPLA/ULA Public Library Sections, ULA School Section, and MPLA Children's and School Section.

2:30 p.m. - 5:00 p.m. *Gold Room*

BCR Technical Update

Speaker: JoAn Segal, executive director, Bibliographical Center for Research, Denver.

2:30 p.m. - 5:00 p.m. *Grand Ballroom I*

The First Amendment and Decency

Speakers: Mrs. Basil (Joy) Beech, executive director, Citizens for True Freedom, and friends.

Sponsor: ULA Intellectual Freedom Committee

Restaurants

Salt Lake Valley has hundreds of restaurants and fast food operations to suit the tastes and pocketbooks of everyone. The ZCMI Center and Crossroads Plaza, both just across the street from Hotel Utah, have a wide variety that are not included on this list. These listed here are within one to eight blocks and are worth the walk. And contrary to what you may have heard, finding a restaurant that serves liquor in Salt Lake is no problem. All of those listed below have liquor licenses except The Roof. To assure entrance, call for reservations.

Allie's (American)
Salt Lake Marriott
75 So. West Temple
581-0800

Annabelle's (American)
Heritage Square
580 So. West Temple
521-7634

Benihana of Tokyo
(Japanese-style steak house)
265 So. West Temple
322-2421

Support MPLA Advertisers

Caldera Exchange (Mexican)
32 Exchange Place
364-2574

China Village (Chinese, American)
334 So. Main
355-5507

The Godfather
(Italian, seafood, steak)
352 So. 300 East
521-3794

Lamb's Grill Cafe
(American, Greek)
169 So. Main
364-7166

La Morena Cafe
(Mexican, American)
Guadalupe Center
346 W. 100 So.
355-1541

Market Street Grill
(American, seafood)
44 Post Office Place
322-4668

The Mikado (Japanese)
76 W. 100 South
328-0929

Ristorante Della Fontana
(Italian)
336 So. 400 East
328-4243

Steak Company
(American, seafood, steak)
139 E. South Temple
359-7666

Tampico (Mexican)
167 Regent Street
532-9283

Two Guys From Italy (Italian)
165 So. West Temple
532-4897

Victoria Station (Seafood, steak)
165 So. West Temple
363-8305



MPLA Officer Candidates

VP/President Elect



Phyllis E. Baker

An MPLA member since 1974, Phyllis is currently chair of the State Library Section and a member of the executive board. She has previously served MPLA as secretary of the Public Library Section (1979), member of the Professional Development Grants Committee (1980-81), and member of the Continuing Education Committee (1975-76). She is the Continuing Education Consultant at the Colorado State Library.

Phyllis sees the strength of MPLA in its support activities that directly benefit members and library services in the region. "We need to explore ways to strengthen our human network, not just during the conference, but throughout the year," she observes.

Donna R. Jones

An active member of MPLA for the past thirteen years and currently the Kansas Representative to MPLA, Donna has been the director of the Pioneer Memorial Library in Colby, Kansas, since 1976. She has served MPLA as chair of the Public Library Section, Recording Secretary, and as chair and secretary of JMRT. And she has not missed an MPLA annual conference since becoming a librarian.

An active member of KLA and ALA, she was a 3-M JMRT Professional Development Grant recipient. She is a former chair of CULS/KLA and former president of Colby Community College Faculty Association. She is currently chair of the Kansas Committee for the Humanities.

Donna firmly supports MPLA and believes that MPLA uniquely provides



opportunities in continuing education and communication for librarians throughout the eight-state region.

Recording Secretary



Jerry Kaup

Library director at the Minot Public Library since 1977, Jerry has been a member of MPLA since 1973. He has served as the Nebraska Representative (1975-76), chair of the Finance Committee (1977-78) and North Dakota Representative (1980-81).

Jerry is also active in NDLA where he has served as editor, chair of the Public Library Section and chair of the North Dakota Public Library Planning Committee. He is currently vice president/president elect of NDLA.

In community service he is active in Lions, having served on the board of directors, and the Chamber of Commerce, where he served as chair of the Education Committee.

Heather McNeil McQuarie

The most recent recipient of the MPLA Beginning Professional Award, Heather is the children's librarian at the Bemis Public Library in Littleton, Colorado. She is currently serving in MPLA as the chair of the Children's and School Section.

Since her graduation from the University of Denver library school four years ago, Heather has become noted for her outstanding and innovative programs, particularly in story telling and is a frequent guest speaker at the University of Denver.



Support MPLA Advertisers

MPLA Section Candidates

Academic

Vice Chair/Chair Elect

Jan Janecek, North Dakota State University Library.

Mary Brown, Seward Community College Library, Kansas.

Secretary

Andrew Kolesar, Colorado State University Library.

Ann Kuntzman, Casper College Library, Wyoming.

Children's and School

Vice Chair/Chair Elect

Jacqueline Tomcat, Shawnee Mission, Kansas.

Honey Lou Bonar, Hastings Public Library, Nebraska.

Secretary

Nancy Chu, Nebraska Library Commission.

Barbara Frick, Atwood High School, Kansas.

JMRT

Vice Chair/Chair Elect

Marla Bouton, Nebraska Central Library Network.

Carole Larson, University of Nebraska, Omaha.

Secretary

Cynthia Berner, Panhandle Library Network, Nebraska.

Robby Nickel, Northwest Kansas Library System.

Public Library

Vice Chair/Chair Elect

Ronald Norman, Kearney Public Library, Nebraska.

Richard Rademacher, Wichita Public Library, Kansas.

Secretary

Eloise Fasold, Arapahoe Regional Library, Colorado.

Lynnda Wangsgard, Weber County Library, Utah.

State Library

Chair

Vee Friesner, Kansas State Library.

Doug Hindmarsh, Utah State Library.

Vice Chair/Chair Elect

Jeanne Goodrich, Nevada State Library.

Barbara Tooker, Private Consultant, Colorado.

Secretary

Judy Zelenski, Central Colorado Library System.

Morel Fry, Nebraska Library Commission.

Technical Services

Vice Chair/Chair Elect

Robie Rand

Paul Cors, University of Wyoming Library.

Secretary

Margaret Knecht, Kansas State Historical Society.

Rebecca Bell, South Dakota State Library.

Trustee

Not Available.

Problems come in all sizes and pamphlet files straighten them out.

Here's how Gaylord makes a good idea even better.

Available in three sizes
in Desert Sand, Red, Blue,
Green, Clear, Gold,
and new "Putty."



Two sizes in Desert Sand,
Red, Blue, and Clear.

For holding the short and the tall, the thin and the flimsy, there's no system like pamphlet files. They can keep even the most difficult paper items upright, organized, and accessible.

And Gaylord Plastic Pamphlet and open-backed Syracuse Files enable you to brighten your shelves and color-code your materials economically in distinctive decorator colors. And, they're smooth, durable, lightweight, and easy to label.

Match this selection with your "problems," and see how Gaylord's pamphlet files can straighten them out.

For more information, call toll-free
1-800-448-6160 (in Cal. call collect: 209-466-2576)
or write to "Better Files," Gaylord, Box 8489,
Stockton, California 95208.

GAYLORD

The trusted source
for library innovation.

PRE-REGISTRATION FORM

UTAH LIBRARY ASSOCIATION/MOUNTAIN PLAINS LIBRARY ASSOCIATION

JOINT CONFERENCE

May 5, 6, and 7, 1982

Salt Lake City, Utah

Hotel Utah

Name _____ Library _____
 Last First Initial

Address _____
 Street City State Zip Code

Institution _____

Registration Fees:	Before April 15, 1982	After April 15, 1982	Amount
Full Conference			
_____ MPLA Member Only	15.00	20.00	\$ _____
_____ ULA Member Only	15.00	20.00	_____
_____ MPLA and ULA Member	15.00	20.00	_____
_____ Non-Member	35.00	40.00	_____
_____ Student, Trustee, Friends	6.00	8.00	_____
Single Day			
_____ MPLA Member Only	7.00	8.00	_____
_____ ULA Member Only	7.00	8.00	_____
_____ MPLA and ULA Member	7.00	10.00	_____
_____ Non-member	16.00	20.00	_____
_____ Student, Trustee, Friends	8.00	10.00	_____
Special Programs			
_____ Eliminating Self-Defeating Behaviors		25.00	_____
_____ All My Somedays (\$15.00 donation requested)			_____
_____ Burnout		N/C	_____
_____ Ethics for Librarians		N/C	_____
_____ Energy Management		N/C	_____
_____ Evening at Park City (Bus, dinner, etc. costs to be determined later)			_____
Meals			
_____ Exhibitors Continental Breakfast	Thursday, May 6, 1982	N/C	_____
_____ Banquet	Thursday, May 6, 1982	15.00	_____
_____ MPLA Board Continental Breakfast	Friday, May 7, 1982	2.50	_____
_____ Awards Luncheon	Friday, May 7, 1982	11.00	_____
		TOTAL ENCLOSED	\$ _____

\$5 service fee on refunds. No refunds after May 1, 1982.

Make checks payable to:

MPLA/ULA Joint Conference

Mail registration form and fees to:

Gerald A. Buttars
 Utah Library Association
 2150 South 300 West
 Salt Lake City, UT 84115

Special Library Tours

Please indicate first and second choices for times!!

Genealogical Library

General Tours: (approx. 1 hour)

_____ Thurs., May 4, 7 p.m.

_____ Wed., May 5, 4 p.m.

_____ Thurs., May 6, 10 a.m.

Technical Processing Tour (45 min.)

_____ Thurs., May 6, 8:30 a.m.

_____ Fri., May 7, 8:15 a.m.

Church Library-Archives

General Tours: (approx. 45 min.)

_____ Wed., May 5, 10 a.m.

_____ Wed., May 5, 3 p.m.

_____ Thurs., May 6, 9 a.m.

Conservation Tour (30 min.)

_____ Wed., May 5, 1 p.m.

_____ Thurs., May 6, 1 p.m.

Visual Resources

(30-45 min.)

_____ Thurs., May 6, 8:30 a.m.

_____ Fri., May 7, 8:30 a.m.

_____ Fri., May 7, 2:30 p.m.



Salt Lake City's Preferred Hotel

Main at South Temple
Salt Lake City, Utah 84111
(801) 531-1000

Reservations will be cancelled after 6 p.m. unless a first night's deposit has been received or payment guaranteed for late check-in. If guest guarantees reservation and does not arrive, room will be billed for one night and the reservation cancelled.

If a room at the rate requested is unavailable, one at the nearest available rate will be reserved.

All rooms subject to applicable city tax.

ROOM RESERVATION REQUEST

NAME _____

ADDRESS _____

CITY _____ STATE _____ ZIP _____

I will be arriving on _____ DAY _____ DATE _____ I will depart on _____ DAY _____ DATE _____

ACCOMMODATIONS

Please reserve the following:

- | | |
|---|--|
| SINGLE OCCUPANCY <input type="checkbox"/> \$43 <input type="checkbox"/> \$56 <input type="checkbox"/> \$62 <input type="checkbox"/> \$72 | SUITES (Executive) _____ \$85 |
| DOUBLE OCCUPANCY <input type="checkbox"/> \$53 <input type="checkbox"/> \$66 <input type="checkbox"/> \$72 <input type="checkbox"/> \$82
(2 persons, 1 bed) | 1 bedroom _____ \$110 _____ \$130
(parlor) |
| TWIN OCCUPANCY <input type="checkbox"/> \$53 <input type="checkbox"/> \$66 <input type="checkbox"/> \$72 <input type="checkbox"/> \$82
(2 persons, 2 beds) | Special 2 bedroom
Luxury Suites by request. |
- Extra Person \$10.00

ALL REQUESTS SHOULD BE RECEIVED 14 DAYS PRIOR TO THE STARTING DATE OF THE MEETING.
RESERVATIONS RECEIVED AFTER THAT DATE CONFIRMED SUBJECT TO AVAILABILITY.

10M 12/79

CUT HERE

Hotels and Motels

Since the conference receives special rates for meeting rooms based on the number of sleeping rooms sold to conference registrants, we encourage you to stay at the conference hotel. But for those who may need less expensive accommodations, these hotels within a few blocks of Hotel Utah may be of interest. The rate given is the lowest rate for two persons.

City Center (\$25)
134 West North Temple
Salt Lake City, Utah 84103
531-9800

Covered Wagon Hotel (\$22)
230 West North Temple
Salt Lake City, Utah 84103
533-9100

Deseret Inn (\$27)
50 West 500 South
Salt Lake City, Utah 84101
532-2900

Hotel Utah (\$53)
South Temple and Main
Salt Lake City, Utah 84111
800-232-7500 or 531-1000
Support MPLA Advertisers

Howard Johnson's (\$35)
122 West South Temple
Salt Lake City, Utah 84103
800-654-2000 or 521-0130

Palace Motel (\$29)
210 West South Temple
Salt Lake City, Utah 84103
532-4400

Temple Square Hotel (\$38)
75 West South Temple
Salt Lake City, Utah 84101
800-843-9999 or 355-2961

Town House Motel (\$25)
245 West North Temple
Salt Lake City, Utah 84103
532-7200

Travelodge - Salt Lake (\$28)
144 West North Temple
Salt Lake City, Utah 84103
800-255-3050 or 933-8200

Marriott Hotel (\$62)
75 South West Temple
Salt Lake City, Utah 84101
800-228-9290 or 531-0800

Motel 6 (\$18)
176 West 600 South
Salt Lake City, Utah 84101
521-3280

Conference Menus

Awards Luncheon

Fresh Fruit Cup
Filet of Sole Meuniere
Rice Valencienne
Carrots Vichy
Hotel Utah Hard Rolls and Butter
Choice of Beverage
Parfait du Chef

Banquet

Combination Salad
Deluxe/Choice of Dressing
Rock Cornish Game Hen,
Au Jus/Natural in
Long Grain Wild Rice Bed
Sautéed Peas and Mushrooms
Tomato Provencale
Hotel Utah Hard Rolls and Butter
Choice of Beverage
Flan du Chef Chantilly



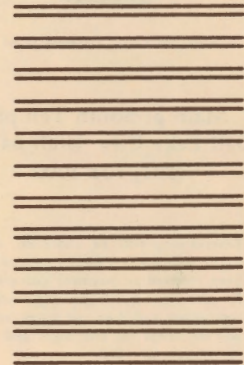
FIRST CLASS
Permit No. 527
Salt Lake City, Utah

BUSINESS REPLY MAIL No postage stamp necessary if mailed in the United States

Postage will be paid by

**Hotel
Utah**

P.O. BOX 2040 / SALT LAKE CITY, UTAH 84111



CUT HERE

**Only
Faxon
could
have
created**



faxon

100 years helping the world communicate

**The superior serials
management system**

that evolves with your changing needs.

- DATALINX for direct access to computerized Faxon data bases and files.
- LINX SC-10 for on-line check-in and claiming.
- LINX for instantaneous electronic messages and comprehensive, on-line training.

Get the complete story
on LINX.

There's no competition!

Mail coupon to:

Faxon

15 Southwest Park
Westwood, Massachusetts
02090 USA

Tel: 800-225-6055 (toll-free)
617-329-3350 (collect in Mass.
and Canada)

Name _____

Title _____

Library/Information Center _____

Address _____

City _____ State _____ Zip _____

Telephone () _____

please send me more information on LINX and how it would work for my library.

please contact me to schedule a free no-obligation LINX demonstration.

MPLAN-2

Program Highlights



Toni Bearman to Keynote MPLA/ULA Joint Conference

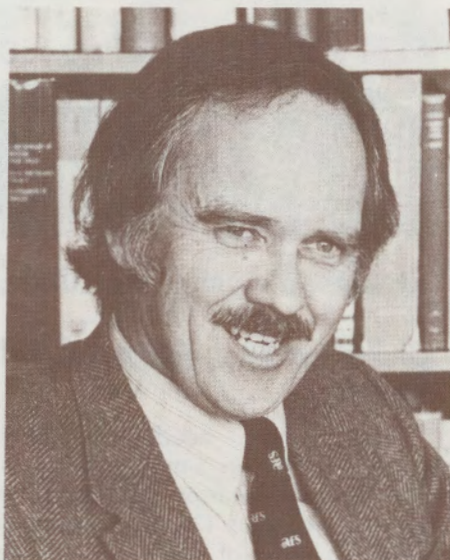
The executive director of the National Commission on Libraries and Information Science, Toni Carbo Bearman, will deliver the keynote address, "National Issues for the Eighties," at the General Session Thursday morning.

Dr. Bearman from 1979 to 1980 was a consultant for strategic planning and new product development at the Institution of Electrical Engineers in London and has been active in the library profession since 1962. For five years, she served as the executive director of the National Federation of Abstracting and Indexing Services (NFAIS). Between 1963 and 1971, Dr. Bearman worked in university libraries, serving as coordinator of public services for the Physical Sciences Library at Brown University, working as a catalog maintenance librarian and serials and ILL loan assistant at Brown and as a subject specialist in technical report and engineering literature at the University of Washington Engineering Library.

Dr. Bearman's expertise combines both theoretical research and practical experience in university libraries, information science organizations, and publishing. She is a Councilor-at-large of the American Society for Information Science and a member of numerous professional associations. She has authored more than 25 articles and technical reports, edited the **NFAIS Newsletter**, and serves on *Support MPLA Advertisers*

the editorial boards of **Serials Librarian** and **Resource Sharing and Library Networks**.

Dr. Bearman will also address the status of national library planning at the national level and comment on the state plans developed by Utah (to be reviewed by Russell Davis, state librarian); Colorado (to be reviewed by Ann Marie Falsone, assistant commissioner, Colorado Office of Library Service), and Washington (to be reviewed by Roderick G. Swartz, state librarian) at the Thursday afternoon session on "Planning for the Eighties," sponsored by the MPLA/ULA Public Library sections and the ULA School Section.



Folklorist Is Banquet Speaker

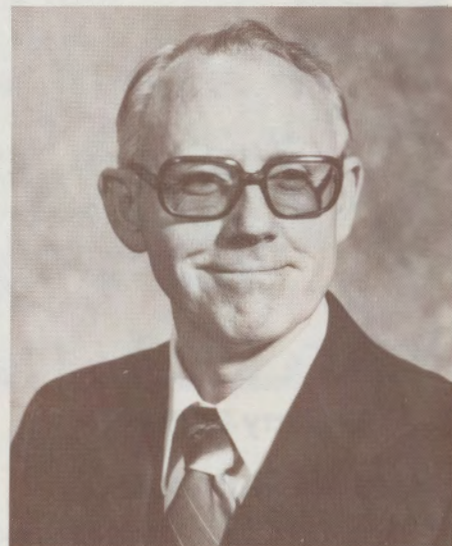
Dr. Jan H. Brunvand, prominent Utah folklorist and professor of English at the University of Utah since 1966, will highlight the conference banquet Thursday evening. His recently published book, **The Vanishing Hitchhiker, American Urban Legends and Their Meanings** (Norton, 1981) will provide the basis for his entertaining and informative discussion. He has entitled his address, "Hooked on the American Urban Legend," a title he had originally considered for the book.

We often think of folklore as dealing with the rural culture or with the past. But Brunvand finds a rich lore among we urban folk today. You may have been part of this phenomenon

yourself. Have you told or heard the story of the vanishing hitchhiker who suddenly disappears after delivering his important message or the one about the cement truck driving husband who dumps his load of cement into the car of his unfaithful wife's paramour when he finds them in bed together upon his return home in the middle of the day? (In some versions he dumps the cement into the bedroom.) These and many other stories spring up throughout the land and are repeated as having happened to someone the teller knows personally or at least to a friend of a friend.

Brunvand will talk about how his obsession with these stories developed and how his book has changed his life.

Don't miss this event!



Eliminating Self-Defeating Behaviors

On Wednesday at the Joint Conference, Dr. Jonathan Chamberlain, a counseling psychologist in the Counseling Center at Brigham Young University, will help librarians learn to eliminate their self-defeating behaviors. We all have at least one or more behaviors that to some degree prevent our best performance on the job and in our family and personal lives. Dr. Chamberlain defines these behaviors as any recurring internal feelings, attitudes, thoughts, and outward behaviors that keep people from reaching their full potential. Examples are inferiority feelings,

depression, compulsive eating, procrastination, withdrawal, fear of people, fear of failure, sexual deviancy, substance abuse, etc.

His eight-step process provides an easy to use, immediately applicable and concrete program that develops self-control, self-esteem, and self-worth.

Dr. Chamberlain in addition to conducting numerous workshops throughout the country has directed research studies on self-defeating behavior workshops and their results and has published books, tapes, and articles on this method.

Minimum registration is ten, and the cost is \$25. Preregistration is required by April 15. The fee includes workbook and refreshment breaks.



Jerry Edelwich

Help for Burnout

Burned up? Or is it only Burned Out? To confirm your diagnosis and discover how to cope with your problem, don't miss Jerry Edelwich's program on Wednesday, "Did You Really Know What You Were Getting Into? Coping with Burnout in the Helping Professions," sponsored by MPLA JMRT and the ULA New Perspectives Round Table. Mr. Edelwich is the co-author of **Burnout: Stages of Disillusionment in the Helping Professions**, now in its fifth printing.

Mr. Edelwich has worked in such diverse human service areas as substance abuse, gerontology, group work, youth services, and family counseling. He is currently a consultant for the U.S. Navy, several convalescent homes, and state and regional training centers as well as an

assistant professor of Counselor Education at the University of Bridgeport.

He obtained his MS degree at the University of Connecticut School of Social Work, has specialized in staff development, and travels extensively throughout the country conducting workshops. His new book, **Sexual Dilemmas**, will be available in the fall of 1982.



Heather McNeil McQuarie

Children and Young Adult Services

Meeting the needs of library patrons from ages 3 months to young adults will be the topic of several conference programs. Dorothy Broderick, founding editor of **Voice of Youth Advocates** and associate professor at the Graduate School of Library Service at the University of Alabama, will address the topic, "Issues in Young Adult Publishing," on Friday at the Awards Luncheon. Her hardhitting editorials and her longtime interest in children's library services as shown in three books and numerous journal articles on the subject promise to make this an event not to miss. She will also address the topic, "Access, Excess, and Success: Library Service to Young Adults and Children," on Friday morning, exploring the question of whether full access to library materials burdens the library or school district or whether this open access is vital to the success of the total library program. A panel of children's librarians from the MPLA region will respond.

Also on the agenda for Friday afternoon are Marilou Sorensen, associate

professor in the Department of Educational Studies at the University of Utah, and Heather McNeil McQuarie, children's librarian at the Bemis Public Library in Littleton, Colorado. They will discuss the role of reading in the development of young people in "Books for Tots." Dr. Sorensen will show how literary experiences influence children in the formation of attitudes and in building concepts, patterns, images, and points of reference. Mrs. McQuarie will talk about books and programs for toddlers and their families. She will have booklists and books available for browsing.

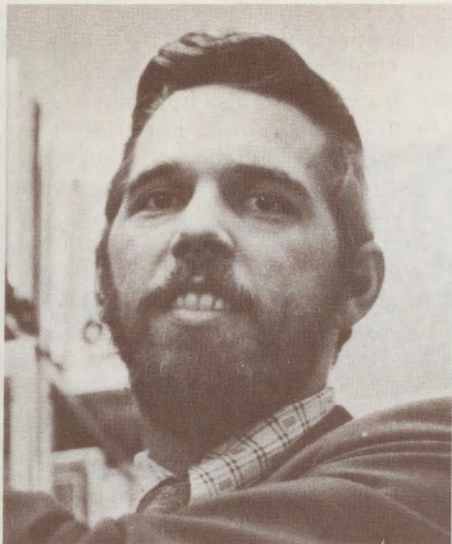
On Thursday afternoon, Kathy Buxton, children's librarian at George Amos Library, Gillette, Wyoming, will join Mrs. McQuarie in telling stories that invite audience participation, such as singing, clapping, and foot stomping in "Hoof 'n Mouth Story telling." Most of these sessions are scheduled for Friday so school librarians can more easily attend.

School librarians and media specialists will want to attend the Friday morning session, "Interaction Between the Classroom Teacher and the Library Media Specialist." Dr. Robert Campbell, social studies teacher, and Lurn Wilhelm, media specialist, from the University Laboratory School at the University of Wyoming will show a slide presentation made by 8th and 9th grade students and discuss cooperation between teacher and media specialist on the subject of violence, emphasizing what is appropriate for media centers on this subject.

Marilou Sorensen



Support MPLA Advertisers



Tom Hennen

Rural Librarianship

The Continuing Education Committee of ULA is sponsoring a conference program dealing with rural librarianship. Thomas Hennen, who is currently the director of the Watonwan County Library in St. James, Minnesota, will present a workshop "Sowing the Seeds of Power." The seminar is designed to assist librarians of rural libraries in collecting and marketing farming and rural materials. Mr. Hennen has compiled a bibliography and published numerous journal articles on the subject. He has also presented this workshop several times and has had many speaking engagements. Currently, Mr. Hennen is the "Farming Materials" columnist for **Booklist** magazine. His educational background includes a B.S. and an M.L.S. degree, both from the University of Wisconsin, Milwaukee. He is active in professional organizations and civic affairs.

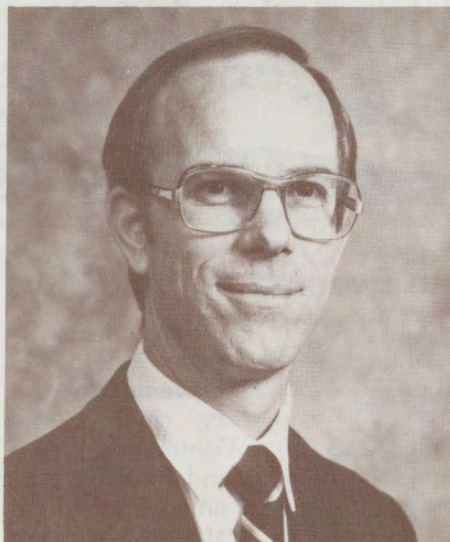
"Sowing the Seeds of Power" is a practical, how-to-do-it program that uses a marketing approach for audiences. The workshop will include a lecture, slide tape show, displays, and a time for questions and discussion. The slide show entitled "Protect Your Investment" is designed to let farmers know what libraries can do for them and their enterprises. Specific topics to be discussed in the lecture are community analysis; collection development, including rural materials, paperbacks and local history; public relations and lobbying on the local level.

MPLA supports Mr. Hennen's workshop and has offered grants to states wishing to sponsor it. ULA's *Support MPLA Advertisers*

grant application was approved so the seminar is being presented with financial assistance from MPLA.

Mr. Hennen's presentation in two separate sessions is scheduled for Wednesday, May 5, from 10:30 a.m. to 12:00 noon and will be repeated that afternoon from 1:00 to 3:00 p.m. with a question and answer period during the last part of the afternoon program.

The information and marketing techniques described in Mr. Hennen's presentation should be of interest to many Utah and MPLA librarians from all size libraries but especially to those working in rural areas.



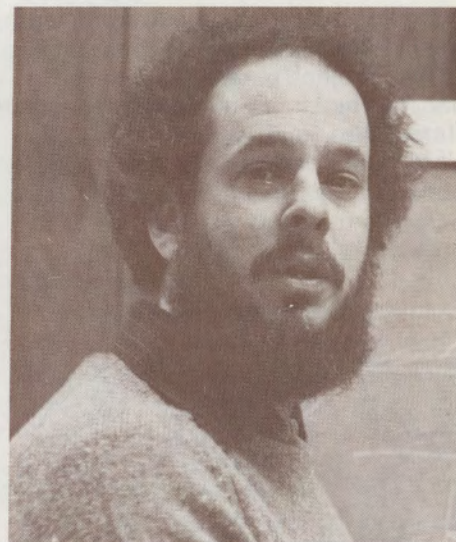
F. Neil Brady

Ethics and Values for Librarians

A workshop to provide concrete guidance to library trustees and administrators concerning the often conflicting domains of management ethics and personal and community values is scheduled for all day Wednesday, May 5. Dr. F. Neil Brady, assistant professor in the Graduate School of Management at Brigham Young University, has developed a set of tightly structured exercises, discussions, and lectures, focusing on understanding the psychological and philosophical reasons for these conflicts and what can be done when they occur.

Dr. Brady has written and taught extensively on public administration and ethics, including most recently "Ethical Theory for the Public Administrator: Managing Competing Interests," published in the **American Review of Public Administration**,

1981. He received his Masters of Public Administration degree from BYU in 1978 and his Ph.D. in philosophy from the University of Texas, Austin. He is a member of the American Society for Public Administration and has served on the Board of Directors of the Central Utah Chapter. His training and experience in both administration and philosophy promise to make this workshop a valuable contribution to trustees and librarians who must deal with the conflict between personal and community values and management ethics.



Ronald Manheimer

"All My Somedays" Project

The Pierce County (Washington) Library humanities program "All My Somedays" is coming to Utah for the MPLA/ULA Joint Conference. Dr. Ronald J. Manheimer, Director of Humanities Programs, and Ms. Lethene Parks, personnel and planning officer and project seminar leader, will not only help librarians learn how to combine history, personal and family heritage, literature, and creative expression in writing their own life story, but show how they can use these techniques with library patrons of all ages and capabilities. They will also explore the theoretical framework of this approach and such practical applications as how to structure a program for different audiences and settings, how to build a local resource and support network, and how to staff and fund a program. The workshop format will emphasize personal participation, group simula-

tion, demonstration, lecture, and case studies.

Dr. Manheimer was previously the Humanities Project director in the Thurston County (Washington) Senior Center and the Evergreen State College and lecturer in philosophy and the Humanities at Evergreen, San Diego State, and University of California, Santa Cruz. He has also published and presented workshops on the humanities and older adults.

Ms. Parks is a past president of the Health and Rehabilitative Library Services of ALA and has published articles on institutional librarianship and bibliotherapy and presented workshops on library services to special populations.

This project is being supported in part by the Utah Endowment for the Humanities and sponsored by the ULA Public Library Section. A \$15 donation is requested from participants to defray expenses.

Lethene Parks



Need a Job?
Call
605-624-2511
MPLA Jobline



An Evening in Park City

Park City's main street reflects the character of the town. Should you choose to spend an **Evening in Park City**, Wednesday during the MPLA/ULA Joint Conference, you'll find the quaint and the contemporary, the elegant and the raucous in its mix of shops, restaurants, and private clubs.

Park city was founded in the mid 1870's when a federal soldier charged with controlling Brigham Young's rambunctious settlement in Salt Lake City sent his troops into the nearby mountains to prospect for gold. Colonel Patrick Connor felt that the best guarantee of a non-Mormon influence in Utah was the establishment of a sound economic base. Silver was discovered. The town boomed. The Hearst fortune, as well as many others, had its beginning here. The mines attracted an ethnic mix. Irishmen, Welshmen, Croatians, Greeks, and, later, Chinese remained as long as the rich veins of silver held out. Park City was a vigorous mining town of 15,000 people in the early 1900's.

After the veins were exhausted, the town's population dwindled to 1,000 in the mid 1950's.

Skiing revitalized Park City in the 1960's. It is now a major ski resort and still growing. Summer activities draw tourists and conventioners, although not yet in numbers as great as the

winter throngs.

May is an ideal time to visit Park City. The Kimball Art Center, many shops and restaurants remain open, but the residents are taking a breather between seasons. The locals recapture their town in May and June. There are no crowds, and the character of the town, a mix of rough historic charm and exuberant contemporary growth, surface.

A bonus, for MPLA/ULA members who wish to combine business with entertainment, is a tour of what City Councilwoman, Utah State and Park City Library Board Member, Tina Lewis, claims to be "the best small library in the United States." The Miner's Hospital, built by a joint effort of towns people, labor unions, and mine owners in 1904 is being restored and converted to a library. It is now the favorite project of many Parkites. They passed a bond issue to build it last year, and physically participated in stripping it for restoration. The building is a charming brick three-story with a Victorian flair. It will house a high interest materials collection and the most current information systems. Whether or not it is completed at convention time, because of the extreme winter, a tour will be offered. Many people have said, "You can't put a modern library in that!" You'll have a chance to decide for yourselves.

Support MPLA Advertisers

Special Library Tours

Tour one or all of the three LDS Church special libraries just across the plaza from Hotel Utah in the Church Office Building guests of ULA Special Libraries Section.

The Genealogical Society of Utah Library is the largest genealogical library in the world. Founded in 1894 to help Church members and the public in genealogical and local history research, the library now has over 1,000,000 rolls of microfilm and over 160,000 bound volumes. Hours: Tues. - Fri., 7:30 a.m. - 10:00 p.m.; Mon. and Sat., 7:30 a.m. - 6:00 p.m. Choose from three general tours of the four-floor library or two technical processing tours featuring their computer systems.

LDS Church Historical Department Library/Archives is both a library and an archive. It is a research facility providing reference and research materials on Mormon and historical subjects. The Library/Archives collects all printed materials by and about the Church

and seeks donations of private papers. It also accessions Church records from administrative offices of the Church Office Building and of Church units throughout the world. Hours: Mon. - Fri., 7:45 a.m. - 4:30 p.m. One tour will introduce Spindex, indexing services, and a general tour of the facility, another will introduce the Conservation Lab.

LDS Visual Resources Library receives and catalogs a variety of high quality materials for use by church publications, telecommunications, broadcast media, and signage. Through a microfiche catalog, patrons can locate photographs, negatives, proof sheets, illustrations, slides, reference books, and "paste-up" art boards. Art directors, designers, illustrators and editors use the library regularly. Hours: Mon. - Fri., 8:00 a.m. - 4:30 p.m. NOT OPEN TO THE GENERAL PUBLIC. Tour will feature a new and unique automated cataloging system for visuals.

All tours require preregistration and will be repeated at various times to accomodate your schedule. Sign up on the preregistration form.

Statement of Publication

The *MPLA Newsletter* is published bi-monthly. Material of regional interest may be submitted to the Editor, Blaine H. Hall, Harold B. Lee Library, Brigham Young University, Provo, Utah 84602. Matters pertaining to individual or institutional membership, claims or orders for back issues should be sent to Joseph R. Edelen, Jr., MPLA Executive Secretary, c/o USD Library, Vermillion, South Dakota 57069. Correspondence on paid advertisements should be sent to the Advertising Manager, Gordon C. Casper, Harold B. Lee Library, Brigham Young University, Provo, Utah 84602.

Back issues of the *MPLA Newsletter* and the *Mountain Plains Library Association Quarterly* are available in microform from Xerox University Microfilms, 300 North Zeeb Road, Ann Arbor, Michigan 48106.

Copy Deadlines

MPLA representatives in each state are responsible for supplying the *Newsletter* with information to share throughout the region, but all librarians are invited to send in newsworthy items. To assure publication in any given issue, please submit copy by the dates indicated below to the Editor.

January 7.....February issue
 March 7.....April issue
 May 7.....June issue
 July 7.....August issue
 September 7.....October issue
 November 7.....December issue

ISSN 0145-6180

Introducing . . .



For a free brochure and details on On-Line Data Communications direct from your library to EBSCO and its potential—contact your local EBSCO office below:



With
EBSCONET
 you can now:

1. Transmit Claims
2. Transmit Interim Orders
3. Access EBSCO's Missing Copy Bank
4. Access EBSCO's Title File for Price/Bibliographic Information
5. Review "Summary of Publications Ordered" Report—by Title or by Subscriber

EBSCO SUBSCRIPTION SERVICES

2727 Bryant Street/Suite 100
 Denver, Colorado 80211
 (803) 433-3235/433-8741 Telex: 45-623

division of
 EBSCO
 Industries,
 Inc. 

Around the Region

Colorado

Elizabeth Sets Rules on Controversial Materials

The Elizabeth Board of Education has adopted a policy regarding public complaints about controversial curriculum or instructional materials.

The board stipulated in the policy that it is ultimately responsible for all curriculum and instructional materials, including library books. The board recognized the right of and need of students to free access to many different types of books and materials. It also recognized the right of the professional staff to select books and other materials supportive of the district's educational philosophy and goals.

The board set guidelines for books and other materials which might be challenged by the public.

"Material that is challenged," states the policy, "usually belongs to one of the three basic categories: religion, ideology or profanity-obscenity."

Religion: Factual, unbiased material on all major religions has a place in school libraries.

Ideologies: Libraries should, with no thought toward swaying reader judgement, make available a balanced collection of primary and factual material, on the level of their students, on various ideologies or philosophies which exert or have exerted a strong force, either favorable or unfavorably, in government, current events, politics, education and other phases of life.

Profanity-obscenity: Materials shall be subjected to a test of literary merit and reality by media specialists and teachers who will take into consideration the maturity of students and the standards of the community.

An individual or group challenging books or materials will be issued a "Request for Reconsideration" form which is to be completed and return-

ed to the superintendent. Materials will then be reviewed by a committee of the building principal, a teacher from the subject area of the material, a media specialist, a parent representative appointed by the superintendent and a school board member appointed by the school board. The committee will make a specific recommendation to the school board. A minority opinion may also be submitted. The board will then decide whether the questioned material will continue to be used.

The board emphasized that the value of any book or material will be judged as a whole, taking into account the purpose of the material, rather than individual, isolated expressions or incidents in the work. (Source: **Plain Speaking**, Dec. 1981.)

Kansas

Network Board Active in First Months

The Kansas Library Network Board has announced a list of key issues it plans to address in the coming year. These issues represent major concerns of many librarians in matters of interlibrary cooperation and resource sharing in the state.

1. Determine the feasibility of a statewide borrower's card.
2. Evaluate the funding sources of libraries in Kansas.
3. Establish a long-range plan for including all library collections in the statewide union catalog on COM.
4. Formulate a plan to develop a statewide list of periodicals.
5. Establish guidelines for uniform statewide ILL policies.
6. Investigate the impact that the ILL system has on Kansas libraries that loan more material than they borrow.
7. Determine how to improve efficiency of resource sharing.
8. Encourage regular training activities for Kansas librarians.
9. Disseminate information about the findings and activities of the Kansas Library Network Board.

Sr. Bernadine Pachta, Network Board chair, has appointed seven task forces to investigate these concerns. The members represent all types of

libraries and, to the degree possible, all regions of the state.

The board has also adopted bylaws, prepared a budget request for the 1982 legislative session, and reviewed applications for the position of director of library network services.

Nebraska

Afternoon Film Festival for Kids

Hastings Public Library is featuring an Afterschool Film Festival this year for third through eighth grade students, according to Honey Lou Bonar, children's librarian.

Many of the films are based on outstanding books for young people. Included are **It Must Be Love 'Cause I Feel So Dumb**, **Mighty Moose and the Quarterback Kid**, **J.T.**, and **P.J. and The President's Son**.

"We hope," said Mrs. Bonar, "this new program will spark a desire to read the book on which the movie was based and then to read other good books featured in our children's and young adult collections." (Source: **NLC Overtones**, Nov.—Dec., 1981.)

Wyoming

The CLASSIC Update

On January 6, 1982, the Wyoming State Library turned on the CLASSIC on-line circulation system for a demonstration. Wyoming State Librarian, Wayne Johnson, reported that the system operated perfectly, and all traditional circulation functions were operational at this time. Library materials were checked in, and checked out; books were placed on reserve and discharged from reserve. Patron status and item status were displayed upon command by the operator. Overdue books were claimed.

The data base for this demonstration was composed of the Wyoming State Library's automated patron file and an OCLC tape of Wyoming State
Support MPLA Advertisers

Library and University of Wyoming Libraries cataloging copy. Full MARC records were displayed and searched by several different keys—including OCLC number, ISBN number, LCCN number and WSL/CLASSIC bar code number.

The successful demonstration run of this circulation system means that Phase I is on schedule. By June, 1982, the Wyoming State Library, Laramie County Public Library, University of Wyoming Libraries, Albany County Public Library, the Rock Springs Public Library, Fremont County Public Library (Lander only), and the Platte County Public Library will be linked together via the CLASSIC on-line circulation system. It seems quite possible that the Wyoming CLASSIC system will be the first operational automated statewide circulation system. (Source: H.M. Yaple, MPLA Wyoming Representative)

Joblist

Closing Date: May 1, 1982.

Position: Documents Librarian/Archivist.

Library: I.D. Weeks Library, University of South Dakota.

Responsibilities: Faculty rank and status tenure track position.

Entry level position. Duties include the administration and supervision of a selective federal depository, and a state documents depository. Other duties include the administration and processing of manuscript collections, university archives, and special collections.

Minimum Qualifications: Masters degree in library science from an ALA accredited library school.

Desirable Qualification: A second masters degree is preferred. Experience in government documents, archival management, and computer programming desirable.

Available: July 1, 1982.

Salary: \$13,000.00 minimum.

How to Apply: Address resumes with the names of three current references to: Bob Carmack, Dean of Library Services, I.D. Weeks Library, University of South Dakota, Vermillion, SD 57069.

The University of South Dakota is an Equal Opportunity/Affirmative Action Employer.

Support MPLA Advertisers

About You

Dr. JoAn Segal has been appointed executive director of BCR after serving for some time as interim executive director. **Anne Marie**

Falsone, assistant commissioner of Education, Colorado, was elected vice president of the BCR Board of Trustees. During Segal's term as interim director BCR's financial condition improved significantly and the use of its automated services has grown.

Susan M. Simpson is the head of Public Services at the Albany County Library in Laramie, Wyoming. Her duties include reference, programming, and acquisitions. Simpson graduated from Columbia's School of Library Service and has been a high school teacher and university composition teacher. The position is revised from that of assistant director.

Brenda Hawley is the new president of the Governing Board of the Colorado Plains and Peaks Library System. Brenda is the head of the Non-Public Services of Penrose Public Library.

Elizabeth Coffman, recently retired after twelve years at the Wyoming State Library, died on October 16. She had been a cataloger and had conducted numerous workshops around the state.

Major Reiner H. Schaeffer, Ph.D., has been selected as the Tenure Director of the Academy Libraries at the U.S. Air Force Academy.

Continuing Education

Date: April 15 - 17, May 15, 1982

Title: **Community Analysis Institute**

Sponsor: School of Library Science, Emporia State University

Location: Emporia State University, Emporia, Kansas

Cost: \$100, plus \$34 for one unit of graduate credit, if desired.

Description: Librarians in all types of libraries will learn a systematic process of collecting, organizing, and analyzing data about an information agency and its environment to determine the unique information needs and interests of the people in its service area. Presentors are Roger Greer, dean, and Martha Hale, assistant professor, School of Library and Information Management, University of Southern California, and Linda Schexnaydre, School of Library Science, Emporia State University.

Contact: Linda Schexnaydre or Robert Grover, School of Library Science, Emporia State University, Emporia, KS 66801

Date: July 29 - August 1, 1982

Title: **1982 May Masee Workshop**

Sponsor: School of Library Science Emporia State University

Location: Emporia State University, Emporia, Kansas

Description: Folk music, dance, games, and lore will be highlighted by a puppetry workshop conducted by Nancy Renfro, author of **Puppetry and the Art of Story Creation** and **A Puppet Corner in Every Library**. Contact: Linda Schexnaydre, School of Library Science, Emporia State University, Emporia KS 66801.

Newly Minted

Associations' Publications in

Print 1981 is a location tool for more than 71,000 publications available from 2,700 associations, plus access to some 13,000 associations by name and acronym. It covers materials in more than 400 subject areas, including physical, biological, medical, and social sciences; all areas of business; hobbies, and special interests. \$110 for 2-volume set, 2,469 pages, from Bowker, 1180 Avenue of the Americas, New York, NY 10036.



MPLA
FOUNDED 1948

- Opportunities for professional involvement
- Continuing education programs
- A forum for the exchange of ideas
- Information on new technology in librarianship
- Support of regional Library efforts
- News or people and programs in member states

MPLA Newsletter
c/o Univ. of South Dakota Libraries
Vermillion, S.D. 57069

COMPLIMENTARY COPY

Non-profit Org.
U.S. Postage
Paid
Permit No. 63
Vermillion, S.D.
57069

**FORWARDING AND
RETURN POSTAGE
GUARANTEED**

Official Publication of the Mountain Plains Library Association

MPLA OFFICERS

President: Jane Kolbe
Sioux Falls College
Sioux Falls, SD 57101
605-331-6664

Vice President: Dorothy Middleton
East High School
2800 East Pershing Blvd.
Cheyenne, WY 82001
307-635-2481

Secretary: Carol White
University of Wyoming Library
Laramie, WY 82071
307-766-6402

Past President: Joseph J. Anderson
Nevada State Library
Capitol Complex
Carson City, NV 89710
702-885-5130

Executive Secretary: Joseph R. Edelen, Jr.
University of South Dakota Library
Vermillion, SD 57069
605-677-5371 Ext. 7

Editor (Ex-Officio): Blaine H. Hall
Harold B. Lee Library
Brigham Young University
Provo, UT 84602
801-378-6117

STATE REPRESENTATIVES

Colorado: Barbara Tooker
Private Consultant
P.O. Box 838
Pagosa Springs, CO 81147
303-264-5756

Kansas: Donna Jones
Pioneer Memorial Library
375 W. 4th
Colby, KS 67701
913-462-3881

Nebraska: Ron Norman
Kearney Public Library
Kearney, NE 68847
308-237-5133

Nevada: Joseph J. Anderson
Nevada State Library
Capitol Complex
Carson City, NV 89710
702-885-5130

North Dakota: Melody Kuehn
Minot High School - Central Campus
115 2nd Street SE
Minot, ND 58701
701-857-4660

South Dakota: Gerald Ehli
Northern State College Library
Aberdeen, SD 57401
605-622-2645

Utah: Mary Petterson
Weber County Library
2464 Jefferson
Ogden, UT 84401
801-399-8516

Wyoming: Henry Yaple
University of Wyoming Library
Laramie, WY 82071
307-766-4228

SECTION CHAIRS

Academic: Lynette Anderson
125 College Drive
Casper, WY 82601
307-268-2371

Children's and School: Heather McNeil McQuarie
Bemis Public Library
6014 S. Datura
Littleton, CO 80120
303-795-3826

Junior Members Round Table: Paula Hock
130 S. 1300 E. Apt. 61
Salt Lake City, UT 84102
801-365-7594

Public Library: Dennis Day
Salt Lake City Public Library
209 E. 5th South
Salt Lake City, UT 84111
801-363-5733

State Library: Phyllis E. Baker
Colorado State Library
1362 Lincoln St.
Denver, CO 80203
303-866-2174

Technical Services: Vee Friesner
Kansas State Library
3rd Floor, State Capitol
Topeka, KS 66612
913-296-3296

Trustee: To be named

MEMBERSHIP APPLICATION FORM (Mail to: Joseph R. Edelen, Jr., MPLA Executive Secretary, c/o USD Library, Vermillion, South Dakota 57069)

Name _____ Renewal INSTITUTIONAL MEMBERSHIP. Based on total annual budget.

Position _____ New _____ \$ 25,000 and under \$10.00 per year

Library _____ _____ 25,001-\$ 49,999 20.00 per year

Address _____ _____ 50,000- 99,999 30.00 per year

_____ Phone _____ _____ 100,000- 199,000 40.00 per year

Home Address _____ _____ 200,000- 399,999 50.00 per year

_____ Phone _____ _____ 400,000 and up 100.00 per year

(Please notify MPLA of any changes in address)

_____ PERSONAL MEMBERSHIP. \$8 for salaries \$8,000 or less.
Add \$1 for each \$1,000 up to \$25.

_____ Academic _____ JMRT

_____ Technical Services _____ Children & School

_____ State Agency _____ Trustees

_____ Public Library

_____ RETIRED LIBRARIANS, STUDENTS, TRUSTEES \$ 5

_____ STATE LIBRARY ASSOCIATION MEMBERSHIP \$40

\$ _____ TOTAL AMOUNT ENCLOSED