

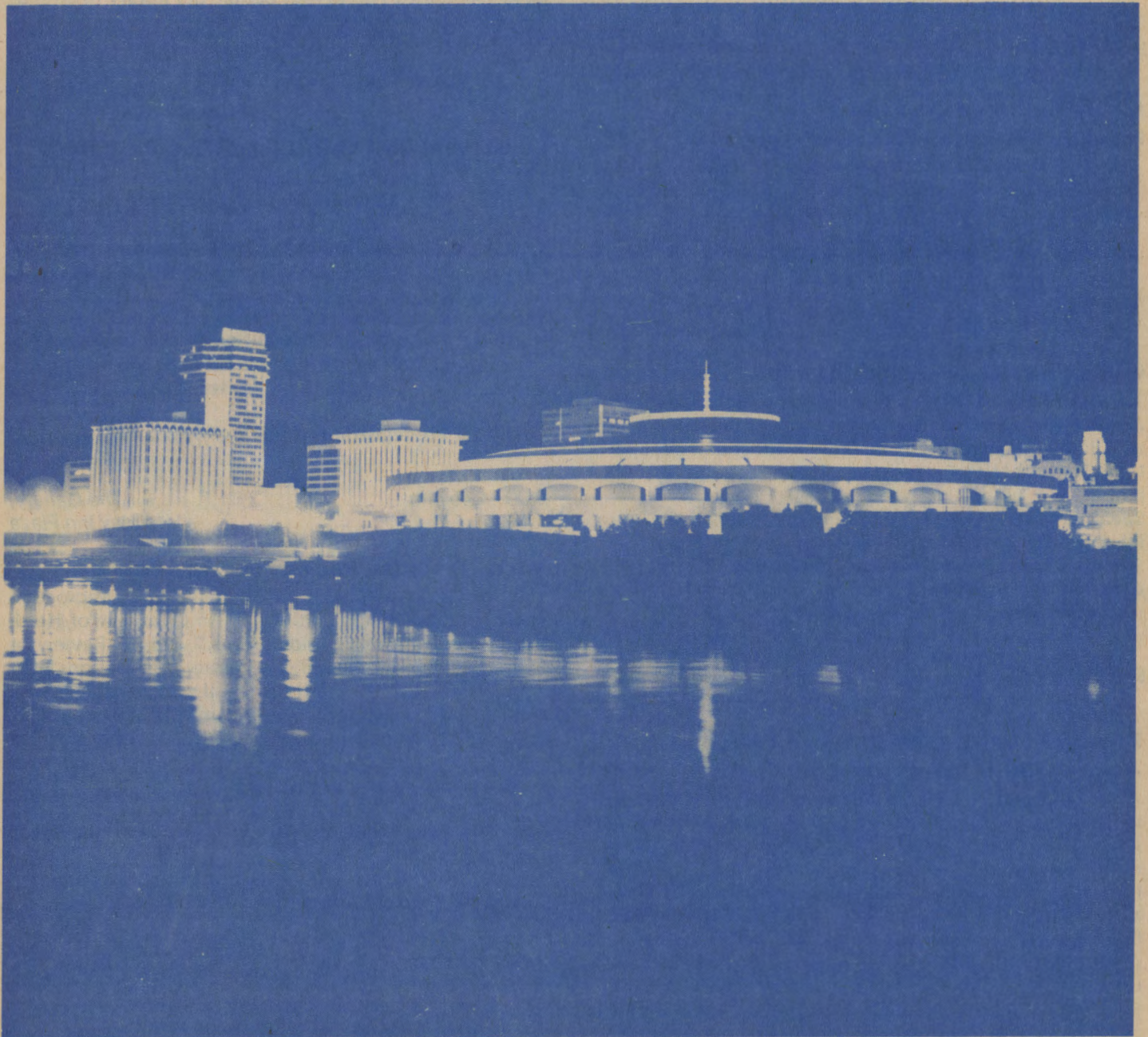


# MPLA Newsletter

Volume 27, No. 3

Editor: Blaine H. Hall

December 1982



**Annual Conference Issue**



## Libraries in Reaction

### MPLA, KLA, KASL Triconference

#### Wichita, Kansas

#### Holiday Inn Plaza

#### April 5-9, 1983

### Tuesday, April 5

9:00 - 5:00 p.m.

*Drawing Room,  
Holiday Inn Plaza*

#### MPLA Executive Board Meeting

**Presiding:** Dorothy Middleton, president

**Cost:** \$30. Entitles up to four people per library to attend. Pre-registration required by March 15.

9:00 - 4:30 p.m.

*Palm Room,  
Holiday Inn Plaza*

#### Conservation of Our Information Resources

The morning session will focus on the nature of library materials, their deterioration, and preventive conservation measures. The afternoon session will include a discussion of in-house restoration vs. professional treatment and the appropriate in-house conservation treatments.

**Speaker:** George Martin Cunha, director emeritus of the Northeast Document Conservation Center and formerly chief conservator of the Boston Athenaeum.

**Sponsor:** KLA Committee on Preservation and Disaster Preparedness

**Cost:** \$20. Pre-registration required by March 15.

### Wednesday, April 6

#### Preconferences

9:00 - 12:00 noon

*Terrace Room,  
Holiday Inn Plaza*

#### Community Analysis and the 1980 Census

The workshop will demonstrate how librarians can analyze their communities in terms of population, age, sex, family composition, income, education, occupations, and other characteristics. (To be repeated at 1:00 p.m.)

**Speaker:** Jerry O'Donnell, U.S. Bureau of Census, Denver Regional Office.

**Sponsor:** KLA Government Documents Round Table

**Cost:** \$5. Pre-registration required by March 15. Maximum enrollment: 30 per session.

9:00 - 4:45 p.m.

*The Gallery,  
Holiday Inn Plaza*

#### Microcomputer Applications in Libraries

The workshop will address "Purchasing a Microcomputer for Library Applications," "An Overview of Hardware and Software Considerations," and "A Review of Some Commercially Available Library Applications Software Packages." In addition small-group sessions will provide each registrant the opportunity to see each of six applications demonstrated, including a word-processing package, a statistical package, a data base management program, an electronic mail system, and two specific library applications programs.

**Speakers:** JoAn Segal, director, BCR; Jim Hensinger, BCR; Dennis Reynolds, BCR.

**Sponsor:** Bibliographical Center for Research, Denver

**Cost:** \$20. Pre-registration required by March 15.

9:00 - 4:00 p.m.

*Patio Room,  
Wichita Public Library*

#### How to Keep Your Head When Everyone Around You Is Losing Theirs

A workshop for consultant and supervisory personnel in multilibrary systems or multibuilding libraries, the program is designed to explore the attitudes and skills needed by consultants and supervisors for personal mental health in handling the interpersonal aspects of their roles. Participants will be asked to bring samples (fliers, brochures, slide programs, scrapbooks, etc.) of program public relations materials they have produced to be used during a time of sharing and for display for the day.

**Speaker:** Dr. John S. Homlish, director, Division of Continuing Education, Professor of Psychiatric Ethics at the Menninger Foundation in Topeka, Kansas.

**Sponsor:** KLA Continuing Education Committee, Consultants and MultiType Libraries

1:00 - 4:00 p.m.

*Terrace Room,  
Holiday Inn Plaza*

#### Community Analysis and the 1980 Census

**(Repeat of the morning session.)**

**Cost:** \$5. Pre-registration required by March 15.

Maximum enrollment: 30 per session.

*Support MPLA Advertisers*

5:00 - 7:00 p.m. *To Be Announced*

### **KLA Executive Council Dinner**

**Presiding:** Richard J. Rademacher, president

4:00 - 7:00 p.m. *Lower Level,  
Holiday Inn Plaza*

### **Registration**

**Thursday, April 7**

7:30 - 5:00 p.m. *Lower Level,  
Holiday Inn Plaza*

### **Registration**

7:30 - 8:30 a.m. *Board Room,  
Wichita Public Library*

### **MPLA Continuing Education Committee Business Meeting**

**Presiding:** Bob Carmack, chair.

7:30 - 8:30 a.m. *Patio Room  
Wichita Public Library*

### **MPLA Public Relations Committee Business Meeting**

**Presiding:** Jim Dertien, chair.

8:00 - 5:00 p.m. *To be Announced*

### **Hospitality Room**

**Sponsor:** Library School Alumni Association, Emporia State University

8:00 - 12:00 noon *Top of the Plaza  
Holiday Inn Plaza*

### **Emporia State Library School Alumni Association**

**Speaker:** Robert Groves, dean, Emporia State University School of Library Science

8:15 - 10:30 a.m. *Exhibit Hall,  
Century II*

### **Exhibits Opening (Coffee and rolls)**

8:15 a.m. - 4:30 p.m. *Exhibit Hall,  
Century II*

### **Exhibits Open**

8:30 - 9:30 a.m. *Exhibit Hall,  
Century II*

### **Conference General Session**

**Keynote Speaker:** Brooke E. Sheldon, dean, School of Library Science, Texas Women's University, and vice president/president elect of the American Library Association.

*Support MPLA Advertisers*

**Presiding:** Dorothy Middleton, MPLA president; Richard J. Rademacher, KLA president; Martha Dirks, KASL president.

10:00 - 11:30 a.m. *The Gallery,  
Holiday Inn Plaza*

### **Human-Computer Interaction and the Online Public Access Catalog**

Report of research on the online public access catalog (OPAC) and user interface, showing the implications for developing online public access catalogs. Business meetings of MPLA and KLA Technical Services Sections follows program.

**Speaker:** Charles R. Hildreth, research scientist, OCLC.

**Sponsor:** MPLA/KLA Resources and Technical Services Sections

10:00 - 11:30 a.m. *Auditorium,  
Wichita Public Library*

### **The Impact of the Economy on the Library: Some Ideas for Survival**

A program for librarians and trustees interested in finding out how to garner more support for libraries from their users and how to obtain money from non-government sources. SRRT Business Meeting follows program.

**Speakers:** Greg Lubelski, Wichita Public Library; and Mary Lou Goodyear, head, Reference Department, Wichita State University Library.

**Sponsor:** KLA Social Responsibilities Round Table

10:00 - 11:45 a.m. *Terrace Room,  
Holiday Inn Plaza*

### **Trustee Information Needs and Trustee Training**

A discussion session for librarians who present trustee training programs to meet and discuss materials, methods, and techniques used to help library trustees understand the scope of their responsibilities and to improve their effectiveness. Examination copies of state and regional trustee manuals and related materials will be on display.

**Sponsor:** MPLA State Library Section

11:00 - 12:15 p.m. *Palm Room,  
Holiday Inn Plaza*

### **Confidentiality of Library Records**

A panel will discuss the background and justification for legislation to guarantee confidentiality of library records—registration, circulation, ILL, meeting room reservations, reference, etc.—without subpoena. They will also discuss specific cases involving library records and the "how to" of organizing and presenting legislation to legislatures.

**Panel:** Maryanne Brush, assistant director of Jefferson County Libraries, Colorado; Geri Schmidt, Consultant Resource Libraries Coordinator, Colorado State Library; Heather McNeil McQuarie, chair, MPLA Intellectual Freedom Committee. Business meeting to follow.

**Sponsor:** MPLA Intellectual Freedom Committee

11:00 - 12:00 noon

Drawing Room,  
Holiday Inn Plaza

### BCR Information Retrieval Update

Presentation will include recent developments in BRS, DIALOG, and OnTyme II Electronic Mail.

**Speaker:** James Maloney, head, BCR Information Retrieval Department.

11:15 - 12:00 noon

Riviera Room,  
Holiday Inn Plaza

### MPLA Academic Section Business Meeting

**Presiding:** George R. Jaramillo

12:15 - 2:00 p.m.

Riviera Room,  
Holiday Inn Plaza

### MPLA Academic Section and KLA College and University Section Luncheon

**Speaker:** Edward G. Holley, dean, School of Library Science, University of North Carolina, Chapel Hill, "Academic Libraries in the Great Depression; Are There Lessons for Today?"

12:00 - 2:00 p.m.

Gold Room,  
Holiday Inn Plaza

### MPLA/KLA Public Library Sections Luncheon

**Speaker:** Kenneth E. Dowlin, director, Pikes Peak Library District, Colorado Springs, Colorado, "The Electronic Library." The KLA Public Library Section business meeting precedes the program, and the MPLA Public Library Section business meeting follows.

1:00 - 2:30 p.m.

Exhibit Hall,  
Century II

### Exhibits (Soft drinks)

2:15 - 3:00 p.m.

Riviera Room,  
Holiday Inn Plaza

### KLA College and University Section Business Meeting

**Presiding:** Rosemary Henderson, chair

2:30 - 3:30 p.m.

Patio Room,  
Wichita Public Library

### MPLA General Membership Meeting

**Presiding:** Dorothy Middleton, president.

2:30 - 4:30 p.m.

Terrace Room,  
Holiday Inn Plaza

### State Legislative Process: How to Lobby Your State Legislature

A practical legislative interaction presentation on working with legislators by an expert.

**Speaker:** Lynn Hellebust, Government Research Service, and editor and publisher of the **Kansas Legislative Report**

Support MPLA Advertisers

**Sponsor:** KLA State Legislative Committee and the Kansas State Library.

2:30 - 4:30 p.m.

Palm Room,  
Holiday Inn Plaza

### BCR/OCLC Technical Update

A review of recent OCLC developments and new OCLC programs.

**Speakers:** Dennis Reynolds, Robbie Rand, Jim Hensinger, and John Miller, BCR OCLC staff.

2:30 - 4:30 p.m.

Auditorium,  
Wichita Public Library

### Reminiscences of a Music Collector - and - What Do You Do Afterwards?

**Speakers:** Professor Dick Wright, Associate Professor of Music, University of Kansas, and a radio station director and broadcaster. Ellen S. Johnson, Librarian for Special Sound Recordings at the University of Kansas Gorton Music Library

**Sponsor:** KLA Special Libraries Section

3:30 - 4:30 p.m.

Top of the Plaza,  
Holiday Inn Plaza

### MPLA Professional Development Grants Committee Business Meeting

**Presiding:** Doug Hindmarsh, chair.

3:30 - 4:30 p.m.

Board Room,  
Wichita Public Library

### MPLA Voluntary Recognition Committee Program and Business Meeting

**Presiding:** Steve Ooton, chair.

3:30 - 5:30 p.m.

Riviera Room,  
Holiday Inn Plaza

### KASL Council Meeting

**Presiding:** Martha Dirks, president

3:30 - 5:00 p.m.

The Gallery,  
Holiday Inn Plaza

### Librarians in Reaction: Library Issues Affecting Children's Services in Public and School Libraries

A panel of school and public librarians from several states will speak to a variety of issues affecting children's services including: How the library media portrays us, Are competency standards needed or useful? program evaluation, and issues of quantity versus quality, school and public library cooperation, the generalist/specialist controversy. Audience involvement and questions will be encouraged. Business meeting for KLA Section follows program.

**Sponsor:** MPLA/KASL/KLA Children's and School Sections.

5:15 - 6:45 p.m.

To Be Announced

### Triconference Wine and Cheese Reception

Sponsor: BCR and Triconference

7:00 - 9:00 p.m.

Gold Room,  
Holiday Inn Plaza

### Triconference Banquet I

Speaker: John Berry III, editor, *Library Journal*, "Libraries in Reaction."

## Friday, April 8

7:30 a.m. - 5:00 p.m.

Lower Level,  
Holiday Inn Plaza

### Registration

8:00 - 5:00 p.m.

To Be Announced

### Hospitality Room

Sponsor: Library School Alumni Association, Emporia State University

### Beta Phi Mu Breakfast

Sponsor: MPLA, KLA, KASL

8:00 a.m. - 1:00 p.m.

Exhibit Hall,  
Century II

### Exhibits Open

8:00 - 9:00 a.m.

Terrace Room,  
Holiday Inn Plaza

### MPLA Board Meeting

Presiding: Donna Jones, president elect

8:00 - 9:00 a.m.

Gold Room,  
Holiday Inn Plaza

### KASL Membership Meeting

Presiding: Martha Dirks, president

9:00 - 10:00 a.m.

Patio Room,  
Wichita Public Library

### Mice Are Nice

Books, poems, fingerplays, puppets, bulletin boards, etc. based on mice in children's literature. K-6. Handouts and ideas galore.

Presenter: Linda Sprague, Topeka

9:00 - 12:00 noon

Gallery,  
Holiday Inn Plaza

### The National Library Association and the Professional Librarian

The presentation will focus on the history of the NLA, the reasons for its growth, and what it can mean to the library professional. The emphasis will be on professional issues to raise the consciousness of librarians. KLA JMRT Business Meeting to follow program.

Support MPLA Advertisers

Speaker: David N. Bernstein, NLA Michigan Chapter president and NLA national vice president/president elect.

Sponsor: MPLA/KLA JMRT and KLA Social Responsibilities Round Table.

9:00 - 10:30 a.m.

Drawing Room,  
Holiday Inn Plaza

### KLA GODORT Business Meeting

Presiding: Marc Galbraith, chair

9:00 - 11:00 a.m.

Palm Room,  
Holiday Inn Plaza

### Business Meeting Precedes Program Public Relations and Fund-raising: 'Dollars and Images'

Speaker: Nancy Bray, Cape Girardeau, Missouri.

Sponsor: KLA Library Trustees and Friends

9:00 - 11:15 a.m.

Riviera Room,  
Holiday Inn Plaza

### Censorship: The Island Trees Perspective

A review of the Island Trees, New York, case of attempted censorship by the board of education and the possible impact of the case on future censorship battles.

Speaker: Barbara Bernstein, executive director, Nassau County Chapter, New York Civil Liberties Union. KLA Intellectual Freedom Committee business meeting follows.

Sponsor: MPLA, KLA, KASL Intellectual Freedom Committee.

9:30 - 11:30 a.m.

Terrace Room,  
Holiday Inn Plaza

### Grants and Ideas for Humanities Programs

Learn about grants available from NEH and see the variety of films, videotapes, photographs, exhibits, etc., available for humanities programs in Kansas. A discussion of new guidelines that encourage grants that include programs for the school age and how to combine Kansas resources with those available in other states will be included.

Speakers: Tom Phelps, National Endowment for the Humanities, and Cindy Wang, Kansas Committee for the Humanities.

Sponsors: National Endowment for the Humanities and Kansas Committee for the Humanities.

11:00 - 12:00 noon

Patio Room,  
Wichita Public Library

### Nine Nations of America

After reading a book review, the speaker, a high school social studies teacher, developed a project in which American history students studied North America using the creative framework of Joel Garreau's *The Nine Nations of North America*. The presentation includes a videotape of the culminating activity, clips of national TV coverage, discussion of the problem of finding information for nations that did not exist.

Presenter: Nancy Thomson, Blue Valley High School

Sponsor: KASL

12:00 - 2:00 p.m.

Gold Room,  
Holiday Inn Plaza

### **KLA Bookman's Luncheon**

**Speaker:** Janice Young Brooks, author of historical books and novels and contributor to **Women's Day** and other women's magazines.

1:00 - 2:00 p.m.

Terrace Room,  
Holiday Inn Plaza

### **Micro-Computer I - How Do I Get Help?**

The workshop will focus on computers, education consortiums, and other multisyllable words, including ideas on purchasing, database services for research, teacher in-service, software review procedures, software design, applications in the classroom, and other curriculum matters.

**Presenter:** Wayne Schoefer, Rocky Mountain Educational Computer Consortium

**Sponsor:** KASL

2:00 - 3:00 p.m.

Terrace Room,  
Holiday Inn Plaza

### **Micro-Computer II - What Do I Do Now to Start?**

Emphasis in the presentation will be on the school media specialist's view of the topics introduced in the first micro-computer session.

**Presenter:** Renee Rowcliffe, Rocky Mountain Educational Computer Consortium

**Sponsor:** KASL

2:00 - 3:00 p.m.

Palm Room,  
Holiday Inn Plaza

### **KLA Library Trustee and Friends Business Meeting**

**Presiding:** Arnita Graber

**Panel:** Duane Johnson, Vee Friesner, Warren Robinson

2:30 - 3:30 p.m.

Drawing Room,  
Holiday Inn Plaza

### **BCR Update**

A review of BCR's activities in the past year, its plans, its overall status, with an opportunity to ask questions of BCR staff members.

**Speaker:** JoAn Segal, executive director, BCR.

2:30 - 4:00 p.m.

Patio Room,  
Wichita Public Library

### **KLA Special Libraries Section Business Meeting**

**Presiding:** John Russell, chair

2:30 - 4:00 p.m.

Gallery,  
Holiday Inn Plaza

### **KLA General Membership Meeting**

**Presiding:** Richard J. Rademacher, president

2:30 - 4:30 p.m.

Riviera Room,  
Holiday Inn Plaza

### **Workshop in Creative Theatre Programming for Children**

If you've ever wanted to do theatre in your library but didn't have the bodies or the ideas, attending this workshop can give you the recipe. Creative dramatics plus junior high kids equals the Sack and Act Players, a creative acting company of the Wichita Public Library. Sack and Act, directed by Barbara and Charles Fischer, have toured in Kansas and out of state and will perform one of their productions. Business meeting will precede program.

**Sponsor:** MPLA Children's and School Section.

3:00 - 4:00 p.m.

Kiva Hall,  
Holiday Inn Plaza

### **Communication: Catalyst for Success**

A strategy to help librarians communicate in an over-communicated society.

**Speaker:** Virginia Elliott, Catalyst Creative Services

**Sponsor:** KASL

4:00 - 5:00 p.m.

Terrace Room,  
Holiday Inn Plaza

### **Flexible Scheduling: Librarians and Teachers Working Together**

A demonstration of how to work out flexible schedules from the beginning, complete with handouts, a lively presentation by five enthusiastic elementary school librarians, and organizational ideas applicable to school library programs at any level.

**Presentors:** Mary Anna Cuendet, Betty Grisham, Jill Pilkenton, Alberta Robb, and Betty Vequiest, Pittsburg

**Sponsor:** KASL

4:00 - 6:00 p.m.

Palm Room,  
Holiday Inn Plaza

### **KLA Discussion Group on Automated Library Processes**

4:30 - 5:30 p.m.

Board Room,  
Wichita Public Library

### **MPLA Awards Committee Business Meeting**

**Presiding:** James Swan, chair

5:00 - 6:00 p.m.

Drawing Room,  
Holiday Inn Plaza

### **School Library Directors**

**Presiding:** Myrna Bump

5:00 - 6:30 p.m.

Terrace Room,  
Holiday Inn Plaza

### **KLA Executive Board Meeting**

**Presiding:** Dick Rademacher, president

Support MPLA Advertisers

7:00 - 9:00 p.m.

Gold Room,  
Holiday Inn Plaza

### Triconference Banquet II

**Speaker:** Jamake Highwater, author of American Indian studies, poetry, fiction, plays, etc., "The Sweet Grass Lives On: Native American Oral Tradition."

Saturday, April 9

8:00 - 10:00 a.m.

Lower Level,  
Holiday Inn Plaza

### Registration

9:00 - 11:00 a.m.

Children's Division,  
Wichita Public Library

### Program Potpourri: Puppetry, Storytelling and Program Exchange

Tell a story, perform a puppet show or share an idea at the Wichita Public Library. The staff will perform selec-

tions from their recent children's programming and then encourage anyone to share songs, stories, fingerplays, and ideas. Puppet stages will be available for use.

9:00 - 10:30 a.m.

Gallery Room,  
Holiday Inn Plaza

### Oral History—How To Do It From Beginning To End

A presentation of this year's project at Topeka West High School that produced a book by and about Rocky Sickman, a U.S. Marine Iranian hostage.

**Presentors:** Mike Printz and Rocky Sickman

11:00 - 12:00 noon

Palm Room,  
Holiday Inn Plaza

### KASL Council Brunch

**Presiding:** Martha Dirks, president

11:30 - 1:30 p.m.

To Be Announced

### Emporia State Library School Alumni Association Luncheon

## Program Highlights



### ALA President Elect to Keynote Triconference

Dr. Brooke E. Sheldon, dean of the School of Library Science at the Texas Women's University and vice president/president elect of ALA will give the Triconference keynote address at the Thursday general session at 8:30 a.m. Dr. Sheldon has been active in training workshops and consultant activities for library associations, universities, and library agencies from coast to coast. Topics she addresses have been management, evaluation, grantsmanship, networking, continuing education, and a host of other subjects.

She has authored several publications, including **Proposal Writing Handbook, Planning and Evaluating Library Training Programs**, "Personnel Administration in Public Libraries," and serves on the editorial board of **Public Library Quarterly**.



### John Berry to Speak at Banquet I

John N. Berry, III, editor-in-chief of **Library Journal** will be the honored speaker at the Triconference Banquet I on Thursday evening. He will address the conference theme: "Libraries in Reaction."

Berry began his career as Youth/Reference Librarian at the

Reading Public Library in Massachusetts in 1959/60 and worked as Reference Librarian at Simmons College from 1960-62, when he became assistant director until 1964. In 1964 he became assistant editor of **Library Journal** then went for two years to the Bowker Book Department as editor of New Book Projects. He became editor-in-chief of **Library Journal** in 1969.

Mr. Berry was the recipient of the first annual alumni achievement award from the School of Library Science at Simmons College. He has taught in the library schools at Simmons, University of Pittsburgh, and University of Washington, Seattle.

### Trustee Training

State library and regional system personnel who work with public libraries and their boards of trustees are especially invited to a program sponsored by the MPLA State Library Section: "Trustee Information Needs and Trustee Training." The program will give interested librarians an opportunity to meet and discuss materials, methods, and techniques used to help trustees understand the scope of their responsibilities and to improve their effectiveness.

An added feature will be a display of state and regional trustee manuals and related materials. If

you would like to contribute or loan materials for this display, contact Vee Friesner, Kansas State Library, Third Floor, Statehouse, Topeka, KS 66612. Multiple copies would be nice but not necessary. Please indicate if you would grant permission to copy the materials.



## First Amendment Rights: Censorship and Confidentiality of Records

Barbara Bernstein, executive director of the Nassau County Chapter of the New York Civil Liberties Union, will discuss the Island Trees High School censorship attempt recently adjudicated by the U. S. Supreme Court after a seven-year battle. Ms. Bernstein is not a lawyer but has been involved with the case from its beginning. She has been an active community volunteer in civil rights, politics, and the anti-Vietnam war movement as well as a founding member of the Rockville Center Committee for Human Rights, which tried to ensure fair housing for blacks in her community. Ms. Bernstein is a graduate of Radcliffe College and the Harvard Graduate School of Education.

Addressing another important legal issue—the right to privacy—a panel of librarians—Maryanne Brush, Jefferson County Libraries, Colorado; Geri Schmidt, Colorado State Library; and Heather McNeil McQuarie, MPLA Intellectual Freedom Committee—will discuss the need for confidentiality of library records to protect patrons'

rights to privacy. Only one MPLA state, Nevada, has such legislation. Colorado is currently attempting to get such legislation passed, but such legislation is needed in all states. The panel will review the background and need for such laws, review specific cases, and focus on the "how to" of organizing and working to get legislation enacted. These sessions are sponsored by the MPLA, KASL, and KLA Intellectual Freedom committees.

## Special Libraries Program

"Reminiscences of a Music Collector - and - What Do You Do Afterwards?" is the title of a program for special librarians and other interested librarians on Thursday, April 7 at 2:30 p.m. Professor Dick Wright, associate professor of Music at the University of Kansas, where he teaches the history of jazz, radio-TV-film, and popular music courses, and Ms. Ellen S. Johnson, curator of an extensive collection covering eighty years of recorded sound and composed of several special collections, including the James Seaver Collection of Opera and Art Songs and the Wright Collection of Jazz, are the featured speakers.

Prof. Wright will give a lively presentation of his life-long interest and enthusiasm for jazz music and share anecdotes of working with the great living composers, arrangers, and performers of jazz, as well as review the status of educational and research activities in jazz historiography. He will bring useful suggestions for schools, public libraries, and other institutions new to the field or anticipating entering the field.

Ms. Johnson's presentation will be a response to: "We have a record collection; now, what do we do with it?" It will contain an informative and entertaining summarization of her experiences and those of others who are programming and planning for the fullest use of such materials. She will briefly describe associations assisting collectors and schools, give sources of information on the preservation and storage of the various types of recordings, discuss sources of funding and standards for cataloging and indexing. She has experience in computer

assisted indexing, cataloging, and organization of collections.



## Children and Young Adult Services

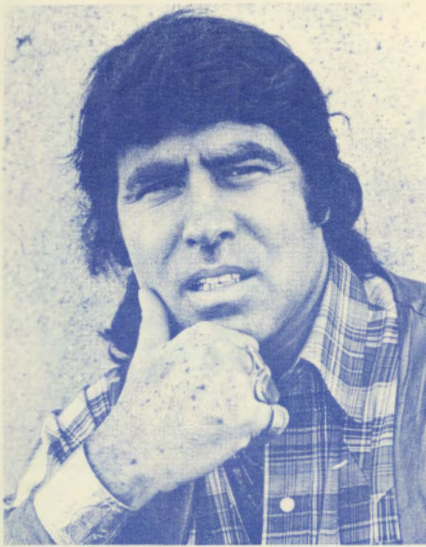
KASL and the MPLA Children's and School Section have combined their efforts to address "Librarians in Reaction: Library Issues Affecting Children's Services in Public and School Libraries" on Thursday at 3:30. A panel of school and public librarians from several states will speak to a variety of issues, including how the library media portrays children's librarians, whether competency standards are needed or useful, program evaluations and the problem of quantity versus quality, school and public library cooperation, and the generalist/specialist controversy.

On Friday at 2:30 the Sack and Act Players from the Wichita Public Library will perform one of their productions in a workshop on "Creative Theatre Programming for Children." If you've ever wanted to do theatre in your library but didn't have the bodies or the ideas, this workshop can give you the recipe. You'll also get information sheets and bibliographies to take home.

Saturday morning at the Wichita Public Library, the library staff will perform selections from their recent children's programming in "Program Potpourri: Puppetry, Storytelling and Program Exchange." You will also have a chance to share your songs, stories, fingerplays, and ideas. Puppet stages will be available for you, so come prepared to participate and enjoy yourself while discovering new programming ideas.

Support MPLA Advertisers





## Jamake Highwater Is Banquet Speaker

One of the foremost authorities on Native American Culture will be the featured speaker at the Triconference Banquet II. Highwater is a writer of international prominence who has made significant contributions to American Indian studies, classical and contemporary music criticism, dance history, and world cultural interpretation. His endeavors in television and radio have made him an important spokesman both for Indian culture and the arts in general. His photographs have won wide acclaim, and he has also won plaudits for his poetry, plays, and fiction.

Highwater is a highly regarded critic and cultural commentator whose articles have appeared in **Smithsonian, American Heritage, Indian Trader, Vogue, New York Times, Saturday Review, Connoisseur, Stereo Review,** and many others.

His authoritative knowledge of American Indian art and culture have made him a popular lecturer, and his diverse speaking schedules include appearance at a medical center, where he talked on American Indian curative ceremonies; museums, for a presentation of the little-known creative contributions of the tribes of the East Coast or a lecture on American Indian painting; universities, where in addition to his regular lectures he consults with officials about the development of courses on Indian culture.

Jamake Highwater has made a number of recordings and a TV *Support MPLA Advertisers*

series, *Songs of the Thunderbird*, is moving steadily forward. A number of his books are slated for paperback editions, and he has been assigned a column for the prestigious *New York Journal of the Arts*.

## GODORT Featuring 1980 Census and Community Analysis

The KLA Government Documents Round Table will sponsor a pre-conference workshop on using census data to conduct a community and/or neighborhood analysis. The workshop will be conducted by Jerry O'Donnell, who is with the U.S. Bureau of Census Regional Office in Denver. Mr. O'Donnell has been with the Bureau of Census for fourteen years and is an information Services Specialist for the Denver office.

Mr. O'Donnell will demonstrate how librarians can analyze their communities in terms of population, age, sex, family composition, income, education and occupations, as well as other characteristics.

The workshop will be presented twice, once in the morning and once in the afternoon of April 6. Participants should not sign up for both sessions as registration is limited to thirty registrants for each session. The registration fee is only \$5.



## Lobbying

A practical legislative interaction presentation on working with

legislators is planned by the KLA State Legislative Committee for Thursday afternoon.

Lynn Hellebust, editor and publisher of the **Kansas Legislative Report** and the **Kansas Legislative Handbook**, conducts seminars on the Kansas legislative process throughout the year and is an expert on legislative processes and lobbying. He has worked in government at all levels, including principal analyst in the Kansas Legislative Research Department. He was the first executive director of the Kansas Governmental Ethics Commission, guiding the administration and enforcement of the state's campaign finance, conflict of interest, and lobbying laws. In 1978, he established his own business, Government Research Service, providing timely, reliable information on state legislatures in general and the Kansas Legislature in particular.

## National Librarians' Association

David N. Bernstein, vice president/president elect of the National Librarian's Association (NLA), will explain the history of the organization, the reasons why it is growing, and what it can mean to library professionals. The presentation will focus on professional issues and hopefully raise the consciousness of librarians to the issues that affect them professionally as librarians rather than as libraries.

Dr. Bernstein has taught Romance languages, literature and humanities for ten years in California and Oregon universities, and is presently reference librarian at Bloomfield Township Public Library, Bloomfield, Michigan.

NLA began in 1977 when a group of librarians felt that ALA and their state associations represented libraries rather than librarians and decided to form an organization that would address itself to the cause of librarians and focus on such issues as low salaries, low status, and a lack of professional standards.

**MPLA Jobline  
Call  
605-624-2511**

# Pre-Registration Form

MOUNTAIN PLAINS LIBRARY ASSOCIATION/KANSAS ASSOCIATION OF  
SCHOOL LIBRARIANS/KANSAS LIBRARY ASSOCIATION

TRICONFERENCE  
"Libraries in Reaction"  
April 5 through 9, 1983  
Wichita, Kansas  
Holiday Inn Plaza

Name \_\_\_\_\_ Library \_\_\_\_\_  
Last First Initial

Address \_\_\_\_\_  
Street City State Zip

Institution \_\_\_\_\_

Registration Fees (Full conference only)	Before March 15, 1983	After March 15, 1983	Amount
_____ MPLA Member Only	15.00	20.00	\$ _____
_____ KASL Member Only	15.00	20.00	_____
_____ KLA Member Only	15.00	20.00	_____
_____ MPLA and KASL Member	15.00	20.00	_____
_____ MPLA and KLA Member	15.00	20.00	_____
_____ KASL and KLA Member	15.00	20.00	_____
_____ MPLA, KASL and KLA Member	15.00	20.00	_____
_____ Non Member	35.00	40.00	_____
_____ Student, Trustee or Friends	6.00	8.00	_____

Oklahoma Librarians may register at member rates

Special Programs (Lunch not included with programs.)

_____ KLA Cont. Ed., Consultants, Multitype Libraries	30.00	_____
_____ KLA GODORT Preconference, morning session	5.00	_____
_____ KLA GODORT Preconference, afternoon session (repeat of morning session)	5.00	_____
_____ KLA Committee on Preservation & Disaster Preparedness	20.00	_____
_____ BCR Microcomputer Applications in Libraries	20.00	_____

(If any of these programs do not carry, you will be notified.)

Meals

_____ CULS/Academic Library Section Luncheon	Thursday, April 7, 1983	9.00	_____
_____ Public Library Section Luncheon	Thursday, April 7, 1983	9.00	_____
_____ Banquet I (Triconference Banquet)	Thursday, April 7, 1983	15.00	_____
_____ Bookman's Luncheon	Friday, April 8, 1983	9.20	_____
_____ Banquet II (Triconference Banquet)	Friday, April 8, 1983	15.00	_____
_____ MPLA, KASL, KLA Beta Phi Mu Breakfast	Friday, April 8, 1983	6.35	_____
TOTAL ENCLOSED \$			_____

(Special dietary arrangements will be made for medical purposes. Please so indicate on this form.)

\$5.00 service fee on refunds before April 1, 1983. No refunds after April 1, 1983

Mail registration and fees to:

John Ellert  
MPLA/KASL/KLA Triconference  
Wichita Public Library  
223 S. Main  
Wichita, KS 67202

Make Checks payable to:  
MPLA/KASL/KLA Triconference

**CUT OUT AND  
MAIL TO HOTEL  
TO MAKE ROOM  
RESERVATIONS**

**RESERVATION REQUEST  
HOLIDAY INN PLAZA**

WICHITA, KANSAS • (316) 264-1181

I will arrive in Wichita on \_\_\_\_\_, 19\_\_\_\_ arriving approximately \_\_\_\_\_ A.M. \_\_\_\_\_ P.M. Will depart \_\_\_\_\_

**Please reserve the following accommodations:**

_____ One Single. 1 bed, 1 person. ....	<b>\$40.00</b>
_____ One Double. 1 bed, 2 persons. ....	<b>\$45.00</b>
_____ One Twin. 2 double-size beds, 2 persons. ....	<b>\$45.00</b>
_____ Additional persons, triple or quad. ....	<b>\$45.00</b>

\*PRICES DO NOT INCLUDE 7% TAX

\_\_\_\_\_ Other — please send me information on Parlor Rooms, Meeting Rooms and Suites.

\_\_\_\_\_ Do not hold reservation past 6 p.m.

\_\_\_\_\_ HOLD reservation until arrival. If I do not arrive and have not cancelled reservation by 6 p.m. BILL me at the address below.

NAME \_\_\_\_\_  
(please print)

COMPANY \_\_\_\_\_

ADDRESS \_\_\_\_\_ CITY \_\_\_\_\_

Teens free when occupying same room as adults  
MOUNTAIN PLAINS LIBRARY ASSOCIATION

**Other Hotels**

For those who may wish not to stay at the conference hotel, the following hotels are in the downtown area. The rates are for two people, twin beds. Tax is not included. The distances shown are from the conference site.

Broadview Motor Hotel  
400 W. Douglas  
Wichita, KS 67202  
316-262-5000  
\$37. 1 block.

Eaton Hotel  
523 E. Douglas  
Wichita, KS 67202  
316-262-5424  
\$18.19. 6 blocks.

Note: The manager says that only a few rooms are available at any given time.

Ramada Inn Central  
221 E. Kellog  
Wichita, KS 67211  
316-267-9281  
\$45. 8 blocks.

Royal Lodge  
320 E. Kellog  
Wichita, KS 67202  
316-263-8877  
\$34. 10 blocks.

Support MPLA Advertisers

**Dining Out in Wichita**

Within walking distance of the conference site, a variety of places to eat offer cuisine for every taste and prices for every inclination:

The Looking Glass (French and American cuisine at moderate prices), Chadwick's (in the beautifully renovated Occidental Hotel), Yummy Yogurt (low prices, good healthy food, including delectable yogurt milk shakes and sundaes), the Foundry (intriguing, casual atmosphere, super hamburgers, low prices), and Necla's Gyros.

Hungry and adventurous persons wishing to explore other areas of the city can savor excellent Japanese meals at Kobe Steak House or the Ichiban, Korean cuisine at Ah-So Restaurant, Szechwan cuisine at the Szechwan Plaza Restaurant. Angelo's and Savute's Ristorante offers superlative Italian meals. La Palma and Chi-Chi's specialize in Mexican food.

Still other excellent restaurants include MIF Deli (wonderful Lebanese food at wonderfully low low prices), Aloha and the Diamond Head (Polynesian/Chinese cuisine), the Olive Tree (Mediterranean and continental), Hickory House and The Grape.

**Shopping in Wichita**

Wichita boasts the state's two largest shopping centers, the world's largest Western store, and many smaller centers with charm and atmosphere. Conference-goers may enjoy visiting the city's designer and specialty shops and fine downtown stores or browsing for antiques and collectibles. Further information, including specific suggestions about where to go and how to get there, will be available in the registration packets.

**Night Life in Wichita**

Night life sparkles in Wichita with music and dances from jazz to country and western, and many of the restaurants mentioned above feature performers in the evening. Additionally, the Marple Cabaret Theatre offers Vintage music and a variety of other evening entertainments. A night at the Crown-Uptown Dinner Theatre always means good food and fun. Lovers of dance and performance may want to attend the Mid-America Dance and Wichita State Dance Spring Concert.



NO POSTAGE  
NECESSARY  
IF MAILED  
IN THE  
UNITED STATES

**BUSINESS REPLY CARD**  
FIRST CLASS PERMIT NO. 2336, WICHITA, KANSAS

POSTAGE WILL BE PAID BY ADDRESSEE



**HOLIDAY INN PLAZA**  
250 WEST DOUGLAS  
WICHITA, KANSAS 67202



**Edward G. Holley to Address Academics**

Edward G. Holley, dean and professor, School of Library Science at the University of North Carolina, Chapel Hill, will address the MPLA Academic Section and KLA College and University Section luncheon on Thursday. Dr. Holley has entitled his speech, "Academic Libraries in the Great Depression: Are There Lessons for Today?"

Holley is well known for his scholarly work on various facets of academic libraries. He has published books on library resources in Texas and South Carolina and has written numerous articles on academic librarianship and on

library history, another strong interest.

Mr. Holley is a past president of the American Library Association and has also served as chair of the Publications Board, editor of the ACRL Publications in Librarianship, and chair of the U.S. Office of Education Advisory Council on College Library Resources and as a panel member and consultant to the National Endowment for the Humanities.

He is a member of Beta Phi Mu, Kappa Delta Pi, Phi Kappa Phi, and received the ALA Scarecrow Press Award for outstanding contributions to library literature in 1964 for his biography of Charles Evans.

**Conservation of Our Information Resources**

Help! The air conditioner malfunctioned, and we have mold growing on our books. What is the best way to mend the torn pages in this book? Help! We have some books that are old and brittle. How can we preserve them for the future? These are just a few of the questions often asked by librarians, archivists, and other record management keepers.

To find the answers to these and many others, register for the Tri-

conference preconference conservation workshop on Wednesday, April 6.

George Martin Cunha, director emeritus of the Northeast Document Conservation Center, former chief conservator at the Library of the Boston Athenaeum, and now a conservation consultant and teacher of library and archives conservation management at the Graduate School of Library and Information Science at the University of Kentucky, will conduct the workshop. In the morning session, Mr. Cunha will speak on the nature of library materials, their deterioration and preventive conservation measures. The afternoon session will include a discussion on in-house restoration vs. professional treatment and the appropriate in-house conservation treatments.

Mr. Cunha's chief interests are the study and development of preventive conservation measures to minimize the deterioration of library and archival materials in their environments and the development of disaster prevention and disaster recovery progress for individual institutions. He keeps abreast of progress by constant liaison with research centers and conservation laboratories in the U.S. and Europe.

Every librarian will find the workshop a valuable source of useful information. Registration fee of \$20 includes coffee and a packet of conservation resource material.

*Support MPLA Advertisers*



## KLA SRRT to Address Economic Survival

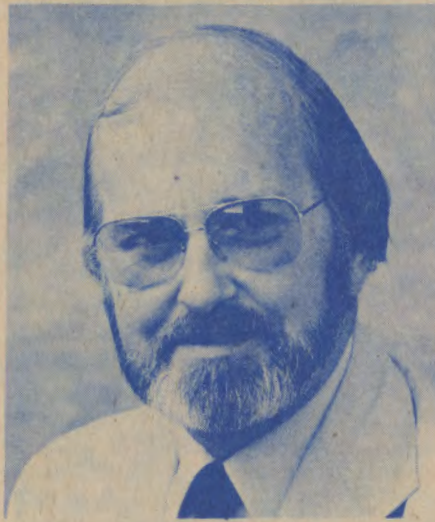
Are your library funds disappearing and have you already tightened your belt to your backbone? Well, plan to attend the KLA Social Responsibilities Roundtable program, "The Impact of the Economy on the Library: Some Ideas for Survival." The program will focus on what practical things librarians can do to gain additional funding for their libraries. Greg Lubelski from the Wichita Public Library will report on a user survey done in Wichita that indicates some ways librarians can garner more support for their libraries from users. Mary Lou Goodyear, Wichita State University, will address the topic of how to raise money from non-government sources. An SRRT business meeting will follow the program.

## Information Needs of Trustees

Librarians who develop and conduct trustee training programs will be able to share ideas and materials at a program sponsored by the MPLA State Library Agency Section on Thursday at 10:00. Trustees, state library agency personnel, systems personnel, librarians who work with instructing public library trustees (especially new trustees) about their duties and responsibilities will find the program valuable.

Trustee handbooks, manuals, etc., from the MPLA states will be collected and displayed at the session. Please send a copy of any special *Support MPLA Advertisers*

material you may have for trustees to: Vee Friesner, chair, MPLA State Library Agency Section, Kansas State Library, 3rd Floor - State House, Topeka, Kansas 66612.



## Keeping Your Head When All About...

Consultants and supervisory personnel in multibranch systems or multibuilding libraries, such as systems consultants, school library coordinators, state library personnel, and public library supervisors will find a program of special, primary interest in Wichita. The KLA Continuing Education Committee Consultants and Multitype Libraries are sponsoring "How to Keep Your Head When Everyone Around You Is Losing Theirs." The program will explore the attitudes and skills needed by consultants and supervisors for personal mental health in handling the interpersonal aspects of their roles.

Each participant will be asked to bring samples (fliers, brochures, slide programs, scrapbooks, etc.) of program public relations materials they have produced. These will be used during a time of sharing and placed on display for the day.

The featured speaker is Dr. John S. Homlish, director, Division of Continuing Education and professor of Psychiatric Ethics at the Menninger Foundation in Topeka, Kansas. He received his doctorate from McMaster University and taught at McMaster, Niagara, and Washburn universities. He has published more than thirty articles and book reviews and spoken to numerous groups. In

addition to his interest in psychiatric ethics, Dr. Homlish has conducted research and study in connections between mental health and moral development. The \$30 registration fee per library agency allows up to four staff members to attend.



## Ken Dowlin Scheduled for Public Library Sections

Ken Dowlin, director of the Pikes Peak Library District in Colorado Springs, Colorado, and president of INFOMATICS, Inc., is a nationally recognized leader in the information technology movement. He has devoted a career to increasing public access to information through the use of technology and to communicating the importance of access to the professional world of libraries and information.

At the Pikes Peak Library District, he has been responsible for the creating of "Maggie's Place," a people-oriented computer system that has gained national recognition. He developed the concept of computer information delivery to the home through a terminal dial-up service for personal and business computer users in June, 1980. The system also includes Commander CODIE, a remote computer personality connected to the library's computer, Maggie. CODIE visits community centers, and other community gathering places to give children and adults hands-on experience to the many uses of the library's electronic reference services and capabilities.



## President's Notes

This month I am using this space to concentrate on one of MPLA's hardest working committees; The Professional Development Grants Committee.

### History and Background

With the Number of graduates from library schools increasing beyond the available jobs, MPLA dropped its scholarship program in 1978 and instituted the Professional Development Grants Program to give association members assistance in funding continuing education. Beginning with an initial \$2000, in May 1980 the board increased the amount to \$3500, allowing the awarding of seven grants of up to \$500 each. The board also gave permission to the committee to request additional funds if applications warranted and recommended relaxing the deadline dates for applications, so requests could be made throughout the year.

In October 1980, the board added five minigrants of \$100 each and provided that the prior membership requirement of three years used for the regular grants be reduced to the current year to encourage regional librarians becoming members of the association. In 1981 the board added another \$1000 for the grants pro-

gram, making \$5000 available for 1982. And given the association's continued fiscal stability, this amount could be available for the program in subsequent years as well.

### Purpose and Application Procedure

#### Scope and Intent

The purpose of the grants is to help people already employed in the library profession to expand and continue their education and to improve their expertise. The grants may be used for formal classwork at a university, an independent study program, attendance at workshops, conferences or seminars, or any other activity that will benefit librarians and the library community and improve library service in the region.

#### Monetary Value

Regular grants, up to \$500 each.  
Minigrants, up to \$100 each.

#### Eligibility

Applicants must be a resident of the MPLA region (Colorado, Kansas, Nebraska, Nevada, North Dakota, South Dakota, Utah, Wyoming). For **regular grants**, applicant must be a current member of MPLA and must have been a member for the past two years (total of 3 consecutive years). For **minigrants**, applicant

must be a current member of MPLA. Students and trustees are eligible to apply. Applicants do not necessarily have to be currently employed in a library.

All applicants must agree to give the MPLA Executive Board an evaluative report on the program after it has taken place. That report may be published in the **MPLA Newsletter**, or other publications.

No applicant may receive more than one grant per 18 months.

#### Selection Basis

Competitive. Applications are reviewed by the MPLA Professional Development Grants Committee. The committee consists of at least 5 members of the Association who are appointed by the MPLA President. The committee decides by majority vote which applicants will receive grants and the amount of the grant up to the maximum.

#### Application Procedure

Grants are awarded on a calendar year basis. Beginning December 1, application forms may be requested either from the Chair, Professional Development Grants Committee or from the MPLA Executive Secretary. Beginning January 1, completed applications may be submitted to the committee at any time during the year through November 1. The Professional Development Grants Committee will review applications and make awards generally after April 15, July 15, and November 15, or as requested by applicants.

Applications should be submitted on the official form or follow the same format. Applications consist of a brief description of the program or activity, its value to the applicant's personal growth and career development, and a budget of anticipated expenses. If printed materials describing the program are available, these should accompany the application.

The grant money will be awarded after the evaluative report has been received and approved by the committee. The committee chair will notify the MPLA Executive Secretary to make payment. The form for the evaluative report will be provided the applicants along with notice of the award.

If one is received, a copy of a continuing education unit certificate or letter of recognition received upon completion of a seminar or workshop should be submitted with the evaluative report.

*Support MPLA Advertisers*

### Further Information

Contact Joseph R. Edelen, Jr., MPLA Executive Secretary, c/o I.D. Weeks Library, University of South Dakota, Vermillion, SD 57069.

### How Good Are Your Chances?

What are your chances for receiving a grant? Based upon the previous five years of awards, the odds are excellent! Although the number of applications has increased, the amount of money available has increased as well. Table A shows a year by year summary of grant activity.

Only during one year, 1979, was all available grant money awarded. Funds not used for grants are returned to MPLA's general fund. The unused funds do not carry over from one year to be added to the total amount available the next year.

So, the opportunity exists. Unfortunately, few members of the association have taken advantage of the program, in spite of decreasing and tightening travel budgets. Total applicants over the 5 years is 53; total awards to date is 33. Members who've applied have had at least a 60 per cent chance of receiving a grant since the program's inception in 1978. Even with widespread publicity, frequently in state and

Year	Total Amt. Available	Number Applicants	Number Awarded	Total Amt. Awarded
1978	\$2000.00	4	4 reg.	\$1725.00
1979	2000.00	6	4 reg.	2000.00
1980	3500.00	15	7 reg.*	3296.50
1981	3500.00	13	8 reg.	
	500.00	2	1 mini	3840.35
1982	5000.00	11**	7 reg.	
		2	2 mini	2567.80#
<b>Totals</b>	<b>\$16,500.00</b>	<b>53</b>	<b>33</b>	<b>\$13,429.65</b>

\* 7 grants awarded; 4 actually completed, 3 cancelled.  
\*\*4 not considered because workshop was cancelled.  
# Total still available for 1982 as of October 18: \$1832.20

local newsletters, MPLA can't seem to give the grant money away!

### What Have Grants Been Used For?

The following list comprises most of the programs funded through the professional development grants program since 1978. Could you have benefited by one or more of them?

#### Seminars, Institutes, Workshops

- Space Planning and Practical Design for Libraries
- Consulting Skills for State Library Personnel

- Library Applications for Data Processing — Role of the Library in an Electronic Society
- People Management — Management Skills Institute
- Library Management Seminar
- RTSD/CRG/LS AACR2 Regional Institute on the Library of Congress Interpretation of the Anglo-American Cataloging Rules, 2nd Edition
- Basic Library Management Skills Institute
- Advanced Library Executive Development Seminar
- Grantsmanship Center Training
- Networks are People

## DOES YOUR SUBSCRIPTION AGENCY OFFER YOU...**MORE?**

**MORE** . . . than 160,000 foreign and domestic serials, including continuations and annuals?

**MORE** . . . personalized service and flexibility from regional offices?

**MORE** . . . easily handled claiming, with the least time-consuming claim system:

- A. A simple list
- B. A monthly Claim Checker
- C. A Missing Copy Bank?

**MORE** . . . innovation, with the world's first international online data communications system for serials?

**MORE** . . . professionals with the knowledge and concern to make your serials program work better?

**We provide the most... MORE often.**

**EBSCO SUBSCRIPTION SERVICES**

The serials professionals.

2727 Bryant Street, Suite 100/Denver, CO 80211 (303) 433-8741/433-3235



- Library Management Skills Institute
- Executive Development Program for Library Administration
- Two summer workshops at University of Denver Graduate School of Library: Science — Television and the Library; Media Equipment Management
- Library Administration Development Program
- Challenge of Change — Critical Choices for Library Decision-Makers
- Women and Library Management: Theories, Skills, and Values
- How to Make Computers Work for Non-Profits
- Fundraising Training
- Team-Building Workshop
- ALTA Will: Workshop in Library Leadership for Trustees
- Space, The Final Frontier: or, We Can't Knock Out the Wall Every 10th Year
- Out-of-Print and Antiquarian Book Market Seminar/Workshop for Librarians and Booksellers

### Independent Research, Conferences

- Independent research in French

- librarianship
- ALA's RASD Interlibrary Loan presentations and ASCLA's programs on multi-type library systems at annual conference
- Medical Library Association's 81st Annual Conference
- Conference on Teleconferencing and Interactive Media

## Additional Contributions Made By Grants Program

A centralized file of the evaluative reports has been developed and maintained by the MPLA Executive Secretary. These reports are available to members who are considering attendance at a workshop or conference which has been attended by a previous grant recipient. Members can make a determination about the worth of a particular offering by consulting the file of evaluative reports.

Based on the evaluative reports, some grant recipients have been requested to prepare a longer article for publication in the **MPLA Newsletter**. Normally, these expand-

ed reports on a conference or workshop are published to help others who might be facing similar problems in their libraries. Shorter versions of the evaluative reports are submitted to the **Newsletter** to inform membership of association activities and to indicate the types of activities being funded by the Professional Development Grants Committee.

Another result of the grants is an occasional recommendation to the board to consider sponsoring or funding workshops in the MPLA region similar to those attended by grant recipients, thus benefiting members by bringing institutes and workshops into the eight-state region, thereby helping reduce travel expenses for those attending.

### The Last Word

If you have yet to apply for a professional development grant, consider it **NOW!** The paperwork is minimal, the opportunities abundant, and your paid membership in the association is the key.

See you all in Wichita!

- Dorothy Middleton

# It's Time To Try A New ROUTE.

## Introducing ROUTE, The Newest Module In Faxon's LINX System.

Now there's a computerized system for creating, updating and printing journal routing slips. The ROUTE system.

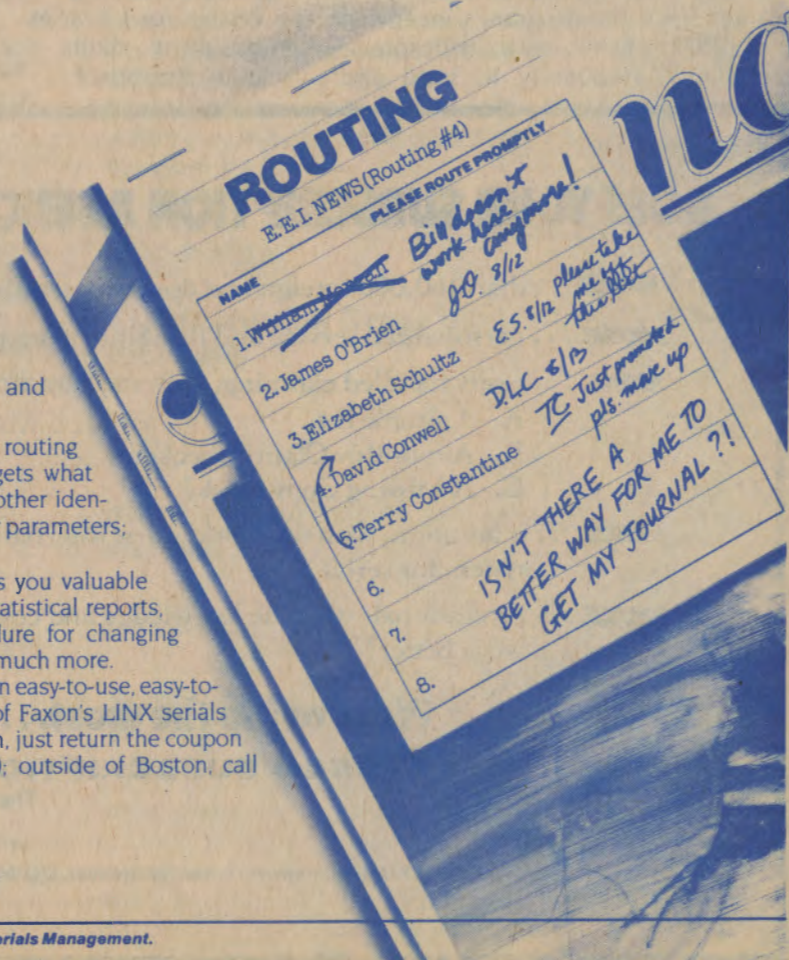
With ROUTE, all the time-consuming details of managing routing lists are taken care of for you. ROUTE keeps track of who gets what publications; it lists readers by name, location, address and other identifiers you specify; it can prioritize routing order by title or other parameters; and it produces all your routing slips for you.

ROUTE also gives you valuable management and statistical reports, a simplified procedure for changing reader records, and much more.

For the full story on easy-to-use, easy-to-learn ROUTE, part of Faxon's LINX serials management system, just return the coupon or call 617-329-3350; outside of Boston, call 800-225-6055.

**faxon**

The Art and Science of Serials Management.



### Show Me The ROUTE.

I'm looking for a way to manage periodical distribution more efficiently. Send me all the facts on your ROUTE system right away.

NAME \_\_\_\_\_  
 ADDRESS \_\_\_\_\_  
 CITY \_\_\_\_\_  
 STATE \_\_\_\_\_ ZIP \_\_\_\_\_

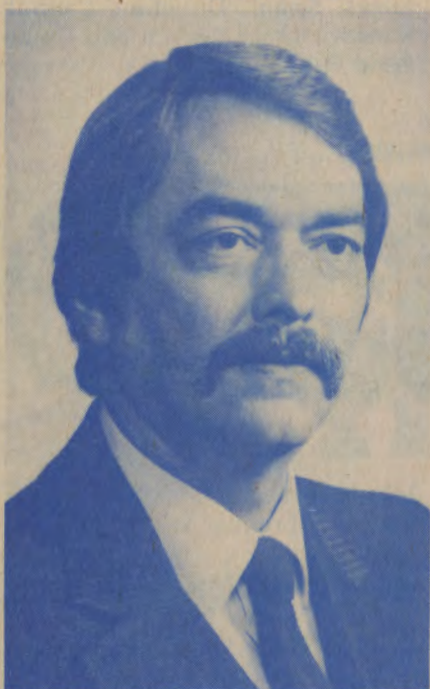
**faxon**  
 15 Southwest Park, Westwood, MA 02090





## MPLA Office Candidates

### VP/President Elect



#### Douglas Hindmarsh

Prior to becoming director of Reference Services, Utah State Library, Salt Lake City, Doug had experience in both public and academic libraries in cataloging, general reference, and as a branch librarian. He also developed and supervised an information center. An active MPLA member since 1973, Doug served on the Scholarship Committee, various State Library Section committees, and has chaired the Professional Development Grants Committee since its inception.

Doug feels that "MPLA should emphasize its programs for individuals, such as continuing education, professional development grants, and state association grants." If elected he would "continue to build on previous years' accomplishments and keep members informed through the **Newsletter**.

Support MPLA Advertisers

### Dorothy M. Liegl

Currently the Deputy State Librarian of South Dakota, Dorothy has formerly held positions as public library consultant, technical services librarian and cataloger. She received her B.A. from the University of South Dakota and her MLS from Emporia. A member of MPLA since 1973, Dorothy has served as secretary for three sections and a member of the Professional Development Grants and Continuing Education committees. She has also held most elective offices in SDLA and has been active on committees.

Dorothy feels MPLA must improve communications with its members, increase its visibility, and adopt regional positions on national issues that concern libraries.



### Recording Secretary



#### Jane Hatch

Jane is director of Southwest Kansas Library System and the Dodge City Public Library. During her 10 years in the library profession she has also been a school librarian and academic associate librarian. "I have found MPLA to be an organization that is practical in its programming, viable in administration, and comprised of individuals committed to excellence in information delivery to residents of the Western states." Jane stated. "It would be an honor to serve on the MPLA Board in such a responsible position as Recording Secretary. I welcome MPLA to Kansas in '83 and look forward to planning for Cheyenne in '84."

### Heather McNeil McQuarie

Heather is Children's Librarian at Bemis Public Library, Littleton, Colorado. With four years in MPLA, she is presently chair of the Intellectual Freedom Committee and has served as chair of the Children's and School Section. "As recording secretary," she said, "my primary concern would be to see that clear, concise minutes keep the general membership aware of decisions made, questions raised, and changes suggested by the Executive Board. MPLA has offered many professional and personal opportunities to me. I am dedicated to the organization and the concern it has to promote communication in our eight-state region."



## MPLA Section Candidates

### Academic

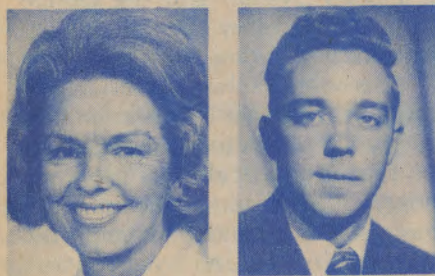
Vice Chair/Chair Elect



**Sue Hatfield**, Government Documents Librarian, Emporia State University Library, Kansas

**Daniel A. Seager**, Reference Librarian, University of Northern Colorado Library

Secretary



**Dorothy Rice**, Administrative services, University of Nevada/Reno Library

**Russell Robertson**, Physical Sciences Librarian, Brigham Young University, Utah

### Children's and School

Vice Chair/Chair Elect



**Michelle Havenga**, Children's Librarian, Sheridan County (Wyoming) Public Library

**Judy Zelenski**, Assistant Director, Central Colorado Library System

Secretary



**Colleen P. Asplund**, Children's Librarian, Albany County (Wyoming) Public Library

**Judy Nichols**, Children's Services, Westlink Branch, Wichita Public Library, Kansas

### JMRT

Vice Chair/Chair Elect



**David Jacka**, Director, Bellevue Public Library, Nebraska

**Dan Siebersma**, Director, Campbell County (Wyoming) Public Library

Secretary



**Nancy Chu**, Children's Services Coordinator, S.E. Library System, Coordinator, Nebraska Library Commission

**Ann Kuntzman**, Technical Services Librarian, Casper College Library, Wyoming

### Public Library/Trustee

Vice Chair/Chair Elect



**Lorna D. Byrd**, Eastern Area Librarian, Pikes Peak Library District, Colorado

**James Swan**, Director, Central Kansas Library System and Great Bend Public Library

Secretary



**John Ellert**, Administrative/Automation Librarian, Wichita Public Library

**Ranae Pierce**, Director of Extension Services, Salt Lake City Public Library, Utah

### State Library

Vice Chair/Chair Elect



**Stephen K. Ooton**, System Director, Arkansas Valley Regional Library System, Colorado

**Sherrie E. Snyder**, Assistant Director of Reference Services, Utah State Library

## Technical Services

Secretary



**Richard "Dick" Allen**, Library Services Coordinator, Nebraska Library Commission

**Joyce C. Lee**, Public Services Librarian, Nevada State Library

Vice Chair/Chair Elect



**Mary Carter**, Head, Acquisitions Department, North Dakota State University Library

**Carolyn Dickinson**, Head, Cataloging and Computer departments Salt Lake City Public Library, Utah

Secretary



**Elnora M. Mercado**, Head Cataloging Department, Auraria Library, Colorado

**Celia K. Tomlin**, Director, American Fork Public Library, Utah

## MPLA Wins Award of Merit

MPLA on September 21, 1982, received a History-Gram from the American Association for State and Local History, stating:

"You have just won an Award of Merit from the American Association for State and Local History for documenting the country school experience through "Country School Legacy: Humanities on the Frontier."

The award was conveyed at its annual meeting in Hartford, Connecticut. The committee, composed of leaders in the history profession, reviewed more than 150 nominations in its annual deliberations. Nomination for the Award was made by the State Historian of Colorado. The Award of Merit is given for "a performance deemed excellent compared nationally with similar activities."

Congratulations go to Andrew Gulliford, project director, Joe Edelen, the MPLA executive secretary, who was the financial manager, and dozens of librarians, scholars, and citizens who enthusiastically carried out the research in the eight-state MPLA region.

## First Online Award Announced

Data Courier has announced the first annual award for excellence in *Support MPLA Advertisers*

published papers on the online industry. The Data Courier Award will be given each year at the Online, Inc. national online conference. The 1982 award will be given in Atlanta during the Nov. 1-3 online meeting.

"The online industry has been growing at a tremendous rate in recent years," said Loene Trubkin, president of Data Courier. "We want to give recognition to the creative thinking in the industry and acknowledge leaders in the information field for the contributions they are making to the community."

The best paper appearing in the internationally respected industry publications **Online** and **Database** will be selected by a panel of judges.

**Database** articles from the following issues are eligible: December 1981, and March, June and September 1982. **Online** articles from the following issues also are eligible: November 1981, and January, March, May, July and September 1982. The best paper will be judged on originality, clarity, timeliness and impact on the online industry. A \$1,000 cash prize and plaque will be presented to the winner each year by Data Courier.

**Online**, a magazine on online information systems, is published bimonthly, and **Database**, a magazine on database reference and review, is published four times each year. Both are published by Jeffrey K. Pemberton, president of Online, Inc. (**Database News**, July-Aug. 1982.)



## MPLA To Sell Retired Display Unit

Pictured above is a four-year old display unit originally purchased for about \$500. Bids are now being accepted up until March 1, 1983 (minimum accepted: \$200). Send bids to MPLA Executive Secretary, Joe Edelen, I. D. Weeks Library, University of South Dakota, Vermillion, SD 57069.

Display includes basic unit of six 15" x 48" hinged fabric covered panels, red on one side, tan the other. Fabric covering accepts Velcro fasteners. Two upright shelf poles, two shelf brackets, one shelf, one sign holder (slightly damaged) and one lighting bracket for three bulbs. Comes with reinforced shipping container. Weighs about 46 pounds.



**MPLA**  
FOUNDED 1948

MPLA Newsletter  
c/o Univ. of South Dakota Libraries  
Vermillion, SD 57069

Non-profit Org.  
U.S. Postage  
Paid  
Permit No. 63  
Vermillion, S.D.  
57069

COMPLIMENTARY COPY

- Opportunities for professional involvement
- Continuing education programs
- A forum for the exchange of ideas
- Information on new technology in librarianship
- Support of regional Library efforts
- News of people and programs in member states

**FORWARDING AND  
RETURN POSTAGE  
GUARANTEED**

Official Publication of the Mountain Plains Library Association

MPLA OFFICERS		STATE REPRESENTATIVES		SECTION REPRESENTATIVES	
<b>President:</b>	Dorothy Middleton East High School 2800 E. Pershing Cheyenne, Wyoming 82001 307-635-2481	<b>Colorado:</b>	Barbara Tooker Private Consultant P.O. Box 838 Pagosa Springs, CO 81147 303-264-5756	<b>Academic:</b>	George R. Jaramillo University of Northern Colorado Michener Library Greeley, Colorado 80639 303-351-2562
<b>Vice President:</b>	Donna R. Jones Pioneer Memorial Library 375 W. 4th Colby, Kansas 67701 913-462-3881	<b>Kansas:</b>	Donna Jones Pioneer Memorial Library 375 W. 4th Colby, Kansas 67701 913-462-3881	<b>Children's &amp; School:</b>	Kathy Buxton George Amos Memorial Library 412 S. Gillette Ave. Gillette, Wyoming 82716 307-682-3223
<b>Secretary:</b>	Jerry Kaup Minot Public Library 516 2nd Ave. SW Minot, North Dakota 58701 701-852-1045	<b>Nebraska:</b>	Linda Rea Hastings Public Library 4th and Denver, Box 849 Hastings, NE 68901	<b>Junior Members Round Table:</b>	Paula Hock 130 So. 1300 E., No. 612 Salt Lake City, Utah 84102 801-363-5733, Ext. 246
<b>Past President:</b>	Jane Kolbe Sioux Falls College Sioux Falls, South Dakota 57101 605-331-6664	<b>Nevada:</b>	Joseph J. Anderson Nevada State Library Capitol Complex Carson City, NV 89710 702-885-5130	<b>Public Library/Trustee:</b>	Hailie Gunn Elko County Library 720 Court St. Elko, Nevada 89801 702-738-3066
<b>Executive Secretary:</b>	Joseph R. Edelen, Jr. University of South Dakota Library Vermillion, SD 57069 605-677-5371 Ext. 7	<b>North Dakota:</b>	Melody Kuehn Minot High School-Central Campus 115 2nd Street SE Minot, ND 58701 701-857-4660	<b>State Library:</b>	Vee Friesner Kansas State Library 3rd Floor - State House Topeka, Kansas 66612 913-296-3296
<b>Editor (Ex-Officio):</b>	Blaine H. Hall Harold B. Lee Library Brigham Young University Provo, UT 84602 801-378-6117	<b>South Dakota:</b>	Dorothy Liegl South Dakota State Library State Library Building Pierre, SD 57501 605-773-3131	<b>Technical Services:</b>	Mary Southwell Utah State Library 2150 So. 300 West Salt Lake City, Utah 84115 801-533-5875
		<b>Utah:</b>	Mary Petterson Weber County Library 2464 Jefferson Ogden, UT 84401 801-399-8516		
		<b>Wyoming:</b>	Henry Yapple University of Wyoming Library Laramie, WY 82071 307-766-4228		

## "PERSONALIZED SUBSCRIPTION SERVICE"

Every customer is assigned an experienced "Home Office" representative. You correspond direct; any title needs, changes, cancellations or problems can be handled promptly by letter or phone. This makes your job easier and keeps you abreast of your subscription needs at all times.

With over 45 years experience, McGregor has built a reputation of prompt and courteous service on both domestic and international titles. We prepay subscriptions ahead of time.

Our customers, large and small, like the prompt attention we give them. We think you would too! Ask about McGregor's "Automatic Renewal" plan described in our new brochure. Write today for your free copy.

**MCGREGOR**

*Magazine Agency*

OUR 50th YEAR

MOUNT MORRIS, ILLINOIS 61054