

June 1992, VOL. 36, NO. 5

MPLA



Newsletter

ARIZONA COLORADO KANSAS MONTANA NEBRASKA NEVADA NORTH DAKOTA OKLAHOMA SOUTH DAKOTA UTAH WYOMING



*Third in a Series:
MPLA's Member
States*

*Inside you will find
information about
special happenings
in Utah, the third in
a series of eleven
articles to be
provided by
MPLA State
Representatives.*

Joint Conference Issue

*MPLA/WLA Cheyenne, WY
September 30-October 3, 1992*

A Call to Conference . . .

It may not be the "mother of all conferences" because we've left out the hassle, hobnobbing and high prices. But we left in:

- **Outstanding workshops on current topics** — enough to keep you busy through every day — whatever your interests.
- **Plentiful exhibits**, and time to visit them to learn about new products and services.
- **Time to discuss** issues with colleagues, and chat with friends, old and new.
- **High jinx and fun:** librarianship doesn't have to be serious business all the time!
- **Reasonable prices** — conferences should be a place to stretch your mind, not your budget.

The conference planning committee and officers of both associations look forward to seeing you September 30 - October 3 in Cheyenne for what we hope will be one of the best conferences you have ever experienced.



Dorothy Middleton
President, WLA



Corky Walters
President, MPLA

AN OPEN LETTER TO TRUSTEES

Dear fellow trustees:

There's no question that all of us would like to become better trustees. but it is not something you can easily learn by reading a book. Busy schedules prevent traveling to workshops offered at different times through the year. The nearest people with similar concerns are board members in your neighboring town—50 miles down the road.

But at last, there is an occasion planned especially for me—a whole series of sessions specifically intended for trustees where I can meet and visit with colleagues in similar communities, and attend sessions on key issues of interest to me: Planning for future needs, political perspectives and strategies, and fundraising.

Therefore, I hope fellow trustees will accept by invitation to come to Cheyenne, especially for the post-conference trustee workshops on Saturday, October 3. Although there are workshops of interest throughout the conference, this day should be a particularly exciting forum in which to compare notes, to brainstorm, to share "war stories," and to learn from each other and outstanding presenters how to help our libraries meet the challenges they face as we approach a new century.

For my library, I think its an occasion I can't afford to miss!
See you there.

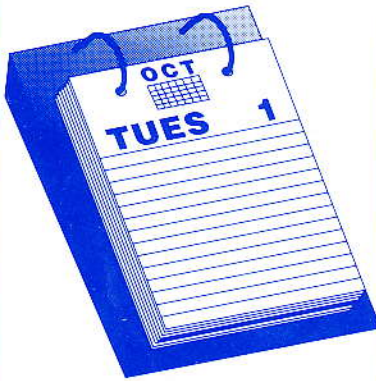
Anne Goodwin
Trustee, Laramie County Library System
Cheyenne, Wyoming

NEW!

More Features,
More Benefits...

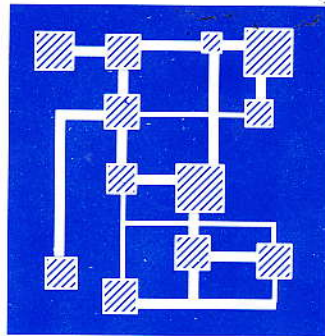
WILSONDISC[®]

CD-ROM Retrieval System



NEW! Monthly Disc Updates with No Price Increase

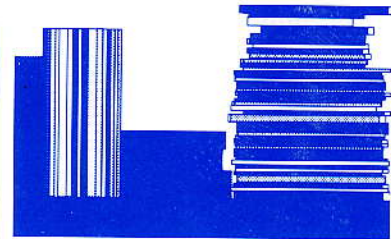
The nine most popular WILSONDISC databases are now updated and cumulated on a monthly basis. Subscribers to these databases receive new discs each month **with no increase in the current subscription rate.**



NEW! Unique No-charge Policy for Networking and Remote Access—All WILSONDISC Databases!

No network or remote access fees are charged to:

- ◆ Public libraries—main and branches
- ◆ Academic libraries (single campus)
- ◆ School libraries (single school).



NEW! Software—with Journal Tagging

The new WILSONDISC software—Version 2.4—contains exciting enhancements, including an improved journal tagging feature which enables an unlimited number of custom messages, an enhanced WILSEARCH mode searching feature, an expanded BROWSE mode search capability (available on selected databases), *and much more!*

To Order Call Toll-Free 1-800-367-6770

Outside of the U.S. and Canada, call 1-212-588-8400.
Telefax 1-212-590-1617.



THE H. W. WILSON COMPANY

950 UNIVERSITY AVENUE, BRONX, NY 10452

Conference Keynote Speaker

Kate Rand Lloyd

Editor at Large of WORKING WOMAN

Kate Rand Lloyd, one of the nation's premier writer/editors, is the Editor at Large of WORKING WOMAN magazine and a noted authority on women.

Since she joined the magazine as Editor-in-Chief in 1977, WORKING WOMAN's circulation has grown from 97,000 to more than 900,000 today.

After winning the impressive Prix de Paris offered by *Vogue* magazine, Ms. Lloyd developed her editorial career at *Vogue* and *Glamour* magazines, achieving the title of Managing Editor at each of these publications. Her decision to move to WORKING WOMAN has allowed her to focus the full range of her interests, as well as her experience, on the millions of women who are making news and breaking old patterns as they move into and up through the work fence.

Kate Rand Lloyd has lectured extensively on topics related to working women across the United States (she created her current title, Editor-at-Large, in 1983, to express her growing role as spokeswoman for the magazine). She has been interviewed and quoted in most major newspapers, including *The New York Times*, *The Washington Post*, *USA Today*, and the *Christian Science Monitor*, and has appeared on such major national television shows as "Donahue," "Today," and "The MacNeill/Lehrer News Hour." Her biography appears in several major reference books, including *Who's Who in America*.

Kate Rand Lloyd currently serves on the boards of the Child Care Action Campaign and the Council on Economic Priorities. She chairs the Advisory Council of Women in Community Services. In 1985, Governor Mario Cuomo of New York appointed her to the state Job Training Partnership Council.

In 1982, Mayor Edward Koch named Kate Rand Lloyd to the New York City Commission on the Status of Women; in the same year, she was honored as an Outstanding Woman in Magazine Publishing by the March of Dimes. In 1983, she received the



Quotes From Kate

"One of the questions I am asked is, 'Are women going to start dropping out of the workforce?' The answer to that is absolutely, definitely, totally no. Short of some kind of cataclysm, women are going to continue to move into the workforce in unprecedented numbers."

"People who are running corporations are looking at the oncoming labor shortage, especially of people with good educations and managerial potential. With half of all higher education going to women, they can't afford to ignore them."

"...women are the secret economic weapon of this country. And because we are one of the least male chauvinistic countries, we have the flexibility and the willingness to look at what the country needs—and accept women's economic strength."

"Sex isn't the issue. Productivity and profitability are. So—money wears a skirt."

"Who says you can't have it all? If you went out there and counted, you would find hundreds of thousands, probably millions of women doing just that."

Headliner Award for Women in Communications, Inc. (WICI), and in 1986, the prestigious Matrix Award from WICI's New York Chapter. The

EBSCO is serials service for libraries.

EBSCO believes in providing the best in serials service to our library customers. So we've designed our services with you, the librarian, in mind. Take a look at just a few of the many benefits you receive when you order through EBSCO:

- Accurate, on-time order placement
- Comprehensive international serials service
- Customized serials management reports
- Invoice information in machine-readable form
- EBSCONET® Online Subscription Service
- Interfacing with major automated library systems
- CD-ROM products and hardware available

To learn more about these and other EBSCO serials services for libraries, contact us today. Let us show you what we mean when we say EBSCO is serials service for libraries.



2801 Youngfield Street, Suite 120
Golden, CO 80401-2264
303-237-1753 / FAX 303-237-1752

Women's Equity Action League has honored her with their Economic Award (the "Big WEAL"). In 1987, she was saluted as a "Woman Who Runs the World" by the Sara Lee Corp.

In 1991, Kate Rand Lloyd received the President's Award for exceptional merit in media from the National Women's Political Caucus and joined the Distinguished Women honor list of Northwood Institute.

By invitation, Ms. Lloyd has participated in a six-nation conference sponsored by the Aspen Institute Berlin on "The Future of the Welfare State" (1984); an 11-person delegation to the Soviet Union sponsored by the Rockefeller Foundation and the Soviet Women's Committee (1984); and an inter-faith delegation to Israel and Egypt sponsored by the Jerusalem Women's Seminar (1982). The United

States Information Agency (an arm of the State Department) has twice sponsored Ms. Lloyd on speaking tours of Europe where she discussed American women of today.

Ms. Lloyd also serves on the advisory boards of the National Women's Political Caucus, and the Institute for Women and Work (Cornell University). Ms. Lloyd, who graduated cum laude from Bryn Mawr College in Pennsylvania, has taught as an adjunct lecturer at Columbia University's Graduate School of Journalism as well as at the New York University School of Continuing Education.

Ms. Lloyd, who was born in Minneapolis, MN, and lives in New York City, is married to John Davis Lloyd. They have three grown children and several grandchildren.



JOINT CONFERENCE

"Window to the World: The Challenge of Change"

PRECONFERENCE

WEDNESDAY, SEPT. 30

9 am-noon *Holiday Inn* **Fee: \$10**
Successful Grant Writing
Sponsored by WLA Continuing Education Committee

This hands-on workshop will take the participants through the process of grant writing - from search to writing the proposals. Grants for libraries and library programs will be specifically addressed.
Speaker: Joyce Allison, presently executive director of United Way of Campbell County, has been involved in literacy, writing and teaching in a number of locations in the west.

9 am-2:30 pm *Hitching Post* **Fee: \$26 for 2 part program. Optional lunch: \$8**
Information Power: Restructuring the School Library/Media Center With Your Principal (part 1 of 2 part preconference)
Sponsored by WLA Continuing Education Committee

Keynote speaker Russ Pieken will begin with a lively and humorous presentation followed by a forum discussion. After lunch there will be breakout sessions on affecting change within school systems. Wrap-Up speech, "Urinals, Armpits and Bananas" by Joan Barker will close the session.



Speakers: Russ Pieken, educational consultant, is principal of Oak Hill School, one of top five schools in Kansas. He was recipient for two consecutive years of the Governor's Award in Outstanding Staff Development and recognized for Visionary Leadership by the Association of Supervision and Curriculum Development.

Additional forum participants are Jerry Pauli, Assistant Superintendent of Schools, Thermopolis, WY; Joan Barker, Teacher of the Year, Home-Economics Teacher, Green River HS, WY (also wrap-up speaker); Diana Barnett, Library/media Specialist, Green River HS and Carolyn Jacobi, District Coordinator of Technology, Campbell County Schools, WY. Breakout group facilitators are as follows: elementary, Kim Mogen and Carolyn Jacobi, Campbell

County School District; middle school/junior high, Kathryn Sessions and Cheryl Fanning, Johnson Junior HS, Cheyenne, WY; and high school, to be announced.

Noon-1 pm *Holiday Inn* **Fee: \$8.50**
Lunch Buffet for Preconference attendees and others

1 pm-2:30 pm *Holiday Inn* **Fee: \$14**
Playing the Numbers Game: Using Library Statistics to Tell Your Library's Story to Government Funding Agencies and Publics
Sponsored by MPLA State Agency, Cooperatives, and Systems Section

The appropriate analysis and persuasive presentation of data is critical when justifying a budget request, planning measurable objectives, or marketing collections and services. Learn six proven strategies of analyzing and presenting data successfully in library settings.
Speaker: Keith Curry Lance, Director, Library Research Service, State Library & Adult Education Office, Colorado Department of Education. Lance provides custom research services to library managers.

2:45 pm-4 pm *Hitching Post* **Fee: \$6 (Part 2 only)**
Information Power: How to Create a District Technology Plan (Part 2 of 2 part preconference)
Sponsored by WEMA

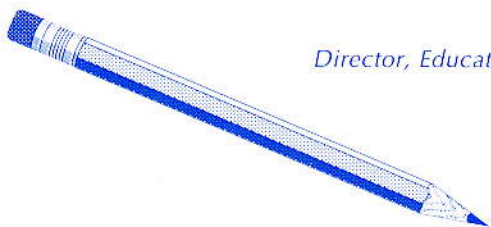
A school district technologist will describe the steps needed to make a plan that will fit your district.
Speaker: Carolyn Jacobi, District Coordinator of Technology, Campbell County School, WY.

2:45 pm-4 pm *Holiday Inn* **Fee: \$9**
Marketing and Customer Service
Sponsored by WLA Continuing Education Committee

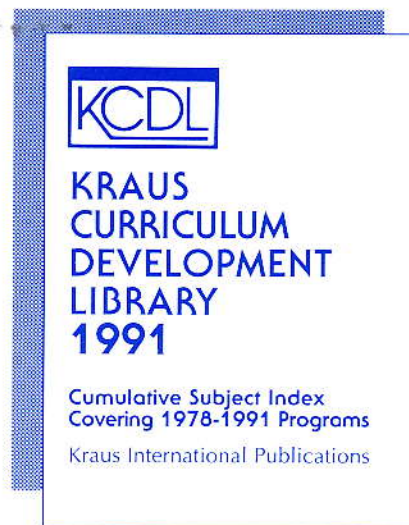
How do you apply the basics of marketing to your library setting? This program is for you. Learn about advertising, promotion and special events as they relate to customer service.
Speaker: Linda Millemann for the Tattered Cover Book Store based in Denver.

For THE Curriculum Source Our Customers Say It All!

"The KCDL microfiche collection serves as our primary information resource when students and faculty initiate studies involving curriculum development. This collection effectively addresses the ongoing problem of obtaining a nation-wide assortment of current curriculum guides, teaching units, and other kinds of teaching, learning packages. With the current emphasis on curriculum integration and continuity, the KCDL microfiche collection provides outstanding models which can be utilized directly (and immediately) with students and faculty."



Robert A. Honeywell
*Director, Educational Resources Center
Utah State University*



KCDL is a unique curriculum guide collection from diverse sources in North America. Accompanied by a one-volume printed Cumulative Subject Index and a microfiche Key Word Index for easy access and cross reference.

KCDL is available on an annual basis, with 300 new guides added to the program each year.

Please write or call us toll free at
(800) 223-8323
for more complete information.

Kraus International Publications
Route 100
Millwood, New York 10546

2:45 pm-4 pm Hitching Post
Theme-based Literature Units
Sponsored by WEMA

Fee: \$6

This presentation will focus on how to select and judge the best children's literature to use for a theme-based approach, bringing the best literature to whole-language classrooms, utilizing children's books to inspire children to write, and celebrating the many new multicultural titles offered. Emphasis will be placed on cooperation between the school and public librarian as well as collaborative use of resources.

Speaker: Beth Elder is Children's Collection Specialist for the Denver Public Schools. Beth reviews and selects children's books for a diverse 22-branch library system.

WEDNESDAY/THURSDAY

4 pm-5 pm Hitching Post
AECT Update: Reports from the AECT National Convention
Sponsored by WEMA

Three WEMA members returning for the AECT 1992 National Convention held in February 1992 in Washington DC bring exciting information and stimulating ideas on what's happening in the world of educational communications and technology.

Speakers: Jan Burke, District Media Services Coordinator, Campbell County School District, WY, received the Outstanding School Library Media Program Award in 1987-88. She served as WEMA's representative to AECT in 1990. Rick Thomas, Director, Instructional Media Center, Natrona County School District, WY, a position he has held for 11 years, is past-president of WEMA and serves as editor of the newsletter. E. Douglas Hinkle, Wheatland High School, Librarian, WY, has guided school library media programs since 1980. He has taught at the academic and public school levels. In 1992 he was WEMA's Affiliate Assembly Representative to AECT. Currently he is vice-president/president-elect of WEMA.

4:15 pm-5:30 pm Hitching Post
WLA Executive Board Meeting
Sponsored by WLA

Dorothy Middleton, president, presiding

5:00 pm-5:30 pm Hitching Post
MPLA New Member Roundtable Business Meeting
Sponsored by MPLA New Member Roundtable

Kent Slade, chair, presiding

5:30 pm-7 pm Hitching Post
Exhibitor's Reception
Sponsored by WLA/MPLA Joint Conference Committee

Celebrate the opening of the exhibits. Cash bar and hors d'oeuvres.

7 pm-9 pm Hitching Post
MPLA Executive Board Meeting
Sponsored by MPLA
Corky Walters, president, presiding

7 pm-9 pm Central High School Library
WLA Legislative Committee Meeting
Sponsored by WLA Legislative Committee

Alice Meister, chair, presiding

CONFERENCE

THURSDAY, OCT. 1

8 am-5 pm Hitching Post
Exhibits open
Open time to attend exhibits: 11:30 am-12:30 pm

7 am-8 am Holiday Inn
Free Continental Breakfast
Sponsored by WLA/MPLA Joint Conference Committee

7:15 am-8:30 am Holiday Inn
National Trade Databank
Sponsored by MPLA Government Document and Academic Sections

Presentation and demonstration of National Trade Databank, the US Department of Commerce's CD-ROM product containing trade, international economic data and information of foreign countries for 15 federal agencies.

Speaker: Paul Christy with the International Trade Administration, Commerce, Washington DC.

7:15 am-8:30 am Holiday Inn
Solinus Society
Sponsored by Wyoming Solinus Society

Broaden your understanding of the complex arena of librarianship with a presentation to early risers of stimulating research. .
Lesley Boughton, presiding

7:15 am-8:30 am Holiday Inn
Summer Reading Program Sharing
Sponsored by WLA Children's/Young Adult Section

Agnes Kelly, chair, presiding

8:30 am-10 am Holiday Inn
Opening Joint General Session
and Presidents' Program
Sponsored by WLA/MPLA Presidents

WLA President Dorothy Middleton and MPLA President Corky Walters presiding.

Keynote Speaker: Kate Rand-Lloyd, Editor-at-Large, *Working Woman* magazine.

(See article describing Kate Rand-Lloyd elsewhere in this issue.)
Reception for the Ms. Lloyd immediately following program—
10 to 10:30 am at Holiday Inn.

BUYING FROM REVIEWS?

ASSOCIATED LIBRARIES *has the* BEST SELECTION OF NEWLY PUBLISHED TITLES PREBOUND TO LAST

Looking for the latest in children's books to add to your collection? Our free monthly review service highlights all the titles that are reviewed in the current month's issues of School Library Journal and Booklist that are available from Associated Libraries in a prebound edition. Our selections cover the best authors and illustrators from the top publishers and promise to meet your new book needs.

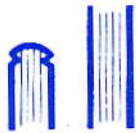
If you are interested in backlist titles, we have an extensive collection of those that continue to circulate through your library and need the added protection that a prebound binding gives.

Our quality selection with illustrated covers, durable bindings meeting LBI specifications and, our unconditional guarantee will start you on the way to preserving your collection.

We offer services that will save you money and time getting your books ready for circulation. Our services include:

- * Free order printouts to attach to your purchase order.
- * Printed Catalog Card Kits and Full Book Processing.
- * Bar Code/ MicroLIF Records to support computerized circulation and cataloging systems.
- * Toll-Free Ordering/ Fax Ordering
- * Competitive Prices

Join the many librarians that look to Associated Libraries for the best in selection and quality binding. Call us toll free to be included in our monthly review service and for our 1992-93 General catalog listing over 5500 titles.



Providing Prebound New Titles to Libraries for over 50 years.

Associated Libraries Prebound Children's Books

229 North 63rd Street Philadelphia, Pa. 19139

Toll-free 1-800-222-4994 * FAX 1-215-476-3207

10:15 am-11:15 am *Holiday Inn*
School/Public Library programming and Cooperation
Sponsored by WEMA

This session will begin with a "director's" point of view, followed by some "tried & true" successful programming ideas complete with photographs, samples of materials distributed to students and parents, and handouts for future reference. Also included will be steps to cooperative planning and budgeting for programs requiring major expenditures. (Suitable for K-12 applications).

Speakers: All the speakers are from WY. Marsha Bradburry, Children's and Young Adult Librarian, Natrona County Public Library, Casper; Carla Howard, Elementary Library Media Coordinator, Natrona County School District, Casper; Sue Knesel, Children's Services Supervisor, Campbell County Library, Gillette; Charlene Paben, Park County Library Director, Park County Library System, Cody; Deb Proctor, Library Media Specialist, Campbell County HS, Gillette; and Rick Thomas, Instructional Materials Center Director, Natrona County School District, Casper.

10:30 am-11:30 am *Hitching Post*
Getting Your Documents into an OPAC
Sponsored by MPLA Government Documents Section

Panel of speakers describing preparation, pitfalls and potential of loading documents into an on-line catalog. Panelists represent different automated systems and tape products such as Marcive, OCLC, NOTIS, INLEX.

Speakers: Louise Stwalley, University of Colorado, Denver; Beverly Norton, Brigham Young University; Vicky York, Montana State

University; Venice Beske, Wyoming State Library; Maggie Parhamovich, Arizona State University.

10:30 am-11:30 am *Hitching Post*
High Fiber serials on a Low-fat Budget
Sponsored by WLA Academic/Special Library Section



A cafeteria of choices to help beat the high cost of periodical access and delivery.

Speaker: Dora Biblarz has been at Arizona State University for 12 years and in academic libraries over 20 years, working in the area of collection development and acquisitions.

12:30 pm-2:30 pm *Hitching Post* **With lunch: \$8**
The Future of Networks
Sponsored by WLA/MPLA Academic Sections and BCR

Louella Wetherbee will summarize and comment on the conclusions of her recent nationwide study of local automated systems and national bibliographic databases and the resulting implications for the future. A panel of representatives from WLN, OCLC, CARL will then discuss the conclusions.

Speaker: Wetherbee is a library management consultant based in Dallas. In her 20 years in librarianship, she has considerable and varied experience in academic libraries and library networks. She has served as executive director of AMIGOS, on the OCLC Users Council, and the Network Advisory Committee for the Library of Congress, and was associated with the graduate library schools at the

University of North Texas and UCLA as well as directing the library at George Mason University in Virginia. Currently her consulting focuses on library management and development in an environment of technological change.

1:30 pm-2:30 pm *Holiday Inn*
Collection Development: Our Choices for a Tech Society
Sponsored by WLA

This program will examine the challenges and opportunities that technological changes are bringing to the collection developer. It will also explore and provide hands-on opportunities in the use of interactive CD-ROM and laser video disk and multi-media orientations in the Macintosh environment. Discussed and demonstrated will be access to on-line networks available to schools and patrons.

Speaker: Laurn Wilhelm is head of the Learning Resources Center, a branch of the University Libraries at the University of Wyoming. The Center serves education majors and laboratory school students with juvenile literature, and curriculum materials. Wilhelm is Vice President/ President elect of WLA.

1:45 pm-2:45 pm *Holiday Inn*
Access: To Morristown and Back Home
Sponsored by WLA Continuing Education Committee

For an understanding of the furor surrounding and following the nationally noticed Morristown vs. Kreimer case, join June Garcia and Dennis Day as the issues are put into perspective and applied to local policies.

Speakers: Garcia is a member of ALA's special task force to establish guidelines regarding patron behavior and library usage; president of the Public Library Association; and Library Extension Service Administrator for the Phoenix Public Library. Day is past president of MPLA and a current member of ALA's Executive Board, previous chair of ALA's Committee on Freedom and Equality of Access Information among other positions and honors. Day is the director of the Salt Lake City Public Library.



3 pm-4 pm *Holiday Inn*
Successful Storytimes for Very Young Children
Sponsored by MPLA Children's/School Section

Descriptions of successful experiences of lap storytimes will be presented. How these very young children can be provided with a good introduction to the library will be discussed.

Speaker: Carla Rosenquist-Bohler, a children's librarian currently teaching Children's Literature at the University of Nebraska, she has presented this program to parents at local junior colleges.

3 pm-6 pm *Holiday Inn*
WYLD Users Council Meeting
Sponsored by WYLD Users Council
Carey Hartmann, chair, presiding

3 pm-4:30 pm *Holiday Inn*
MPLA Academic Research Forum
Sponsored by MPLA Academic Section

Research papers authored by librarians for Mountain Plains states will be presented.

Speakers: To be announced

3 pm-4:30 pm *Holiday Inn*
CD-ROMs and Reference Service: The Promise and the Challenge
Sponsored by MPLA and WLA Academic Sections

CD-ROM technology is having a dramatic impact on reference services in all types of libraries. This program will help librarians become familiar with the growing number and variety of databases available, alternative ways of installing and accessing them, their impact on traditional reference services, and their implications for staffing, training, and bibliographical instructions, as well as their potential and future in library applications. James Hensinger, Microsystems & Services manager at BCR will describe the state-of-the-art in CD-ROM technology and its applications to libraries, and panelists selected from academic, public, and school libraries will share their experiences in acquiring and using this technology in their reference service.

Speaker: James S. Hensinger, Manager, Microsystems & Services, BCR, Denver, CO

Panelists: H. Julene Butler, Bibliographic Instruction Librarian, BYU Library, Provo, UT; Rowena Olson, Director, McPherson College Library, McPherson, KS; Dorothy L. Middleton, Librarian, East High School, Cheyenne, WY; Vicki Nichols, Head, Reference and Adult Services, Jefferson County Library System, Denver, CO.

Moderator: Blaine H. Hall, Humanities Librarian, BYU Library, Provo, UT.

4:30 pm-5:30 pm *Hitching Post*
Creative staffing for the 21st Century
Sponsored by MPLA Technical Service Section

New models for positions in technical services which future libraries may employ but which today's librarians can appreciate.

Speaker: Heidi Hoerman is a candidate for the PhD in Library & Information Science at Indiana University. She was Assistant Dean for Technical Services at Montana State University from 1986-89 and previously held positions at Teachers College of Columbia University and Indiana University.

6:30 pm-9:30 pm *Holiday Inn* *With dinner: \$17*
WLA/MPLA Awards Banquet
Sponsored by WLA and MPLA Award Committees

Announcement and presentation of WLA and MPLA awards.

Speakers: Betsy Thurlo, chair, WLA Awards Committee presiding; Bob Budd, Master of Ceremonies.

FRIDAY, OCT. 2

7 am-4 pm *Hitching Post*
Exhibits open
Open time to visit exhibits: 11:30 am-12:30 pm

7 am-8 am *Hitching Post*
Free Exhibitor's Continental Breakfast
Sponsored by WLA/MPLA Joint Conference Committee

7:30 am-8:30 am *Hitching Post*
WLA Academic Section Business Meeting
Sponsored by WLA Academic Section

Corky Walters, chair, presiding

8:30 am-9:30 am *Hitching Post*
MPLA Academic Section Business Meeting
Sponsored by MPLA Academic Section

Debbie Iverson, chair, presiding

7:30 am-8:30 am *Hitching Post*
WLA Children's/Young Adult Section Business Meeting
Sponsored by WLA Children's/Young Adult Section

Agnes Kelly, chair, presiding

8:30 am-9:30 am *Hitching Post*
MPLA Children's/School Section Business Meeting
Sponsored by MPLA Children's/School Section

Lynn de Freitas, chair, presiding

7:30 am-8:30 am *Hitching Post*
WLA Public Section Business Meeting
Sponsored by WLA Public Section

Debra Bruse, chair, presiding

8:30 am-9:30 am *Hitching Post*
MPLA Public/Trustee Section Business Meeting
Sponsored by MPLA Public/Trustee Section

Carol Connor, chair, presiding

8:30 am-9:30 *Hitching Post*
MPLA State Agency, Cooperatives, & Systems Section Business Meeting
Sponsored by MPLA State Agency, Cooperatives, & Systems Section

Section business meeting and report from MPLA Task Force on Graduate Library Education.

Doug Hindmarsh, chair, presiding;

Speaker: To be announced

10 am-11 am *Holiday Inn*
It's a Jungle Out There! Future Considerations for Tech Services in Small Libraries
Sponsored by MPLA Technical Services Section

Even in small libraries, there are aspects of technical services in the increasingly automated library environment that must be a part of future planning. Panel will discuss these considerations from a non-technical standpoint.

Speakers: Jane Hatch, director, Dodge City Kansas Public Library and Southwest Kansas Library System; Carla Swope, director, Library District #2, Basehor, KS; Rosario Garza, BCR, Denver.

10 am-11:15 am *Hitching Post*
The Newest and Best in Children's literature, Pre-School-8th Grade
Sponsored by WEMA

Quick sketches on fiction, non-fiction and picture books published in 1992 for use in school and public libraries and classrooms.

Speaker: Judith Volc, Coordinator of Children's Services at Boulder, CO Library. Judith has been the coordinator of children's and young adult services at Boulder County Library for 25 years. She has a strong cooperative program with the local school district. Judith reads 1100-1500 new books a year. She also does 5 to 30 programs each week with children and young adults. Judith taught Children's Literature at the University of Denver for 5 years.

10 am-11:30 am *Hitching Post*
The Virtual Library: Agenda for the 90's
Sponsored by MPLA Technical Services Section

The virtual library of library without walls is evolving rapidly. During this decade libraries of all types will be networking electronically to identify and share information. The concept of a virtual library is particularly appropriate for the Mountain Plains region because it spans great distances and expands local library resources. This program will address some of the administrative issues which must be resolved as we work toward the vision.



Speaker: Laverna Saunders has worked a UNLV since 1985, and has participated in selecting and implementing the Innovative Interfaces integrated library system. She has 19 years of experience in academic libraries and is a doctoral candidate at UNLV, concentrating on educational administration in higher education.

10 am-11:30 am *Holiday Inn*
Sowing and Weeding: Gifts and Withdrawals
Sponsored by MPLA

A rationale for weeding, guidelines for policy, practical process, applications for gift sorting. Participants will evaluate "gifts" and share decisions with discussion.



Speaker: Mary Bushing is Head of Collection Development at Montana State University in Bozeman and has made presentations throughout the Rocky Mountain region and the nation.

10 am-11:30 am *Holiday Inn*
Americans with Disabilities Act (ADA) and Its Implications for Library Service
Sponsored by WLA

A librarian, a vocational rehabilitation consultant, and a lawyer will cover the main titles of the Americans with Disabilities Act and their impact on libraries. The speakers will explain libraries' responsibilities as employers, places of public accommodation, and as government agencies. The program will include discussion and questions on compliance with ADA and how libraries can be more things to more people.

Speakers: Linda Koldenhoven, manager of Information Services at Laramie County Library System in Cheyenne, WY, has studied and worked with concerns for the disabled for many years and is currently a member of ALA's Library Services to Developmentally Disabled Persons Membership Activity Group; Darlo Koldenhoven, program consultant for the state of Wyoming, Division of Vocational Rehabilitation, is a broadly trained rehabilitation counselor with a wide variety of personal and professional experience in independent living and rehabilitation; David P. Simonton is the Labor Standards Division Supervisor for the Wyoming Dept. of Employment, and an attorney with experience in fair employment issues.

**F12:30 pm-2 pm *Holiday Inn* *With lunch: \$8*
Libraries and the Political Process
 Sponsored by WLA Legislative Committee**

Lisa Kinney will discuss how to and how not to lobby for libraries. Her book on lobbying, aimed at the avowed apolitical librarian, is to be published in June 1992 by the American Library Association. Kinney will highlight some of the most egregious mistakes a person lobbying for a library can make, and give tips on how to avoid such pitfalls.

Speaker: Lisa Kinney is a librarian turned lawyer turned legislator. She is former director of the Albany County Public Library in Laramie, WY, is currently serving her eighth year as state senator from Albany County, and is working as Documentation Officer for the American Heritage Center at the University of Wyoming.

**12:30 pm-2:30 pm *Hitching Post* *With lunch: \$8*
Children's Author Luncheon and Writing Workshop
 Sponsored by WLA Children's/Young Adult Section**

Louis Sachar, children's author, will present a writing workshop.
Speaker: Louis Sachar is winner of the 1990 Indian Paintbrush Award for his book, *There's a Boy in the Girls' Bathroom*.

**12:30 pm-2:45 pm *Holiday Inn*
National Issues Forums and Libraries
 Sponsored by WLA/MPLA, MPLA Intellectual Freedom Committees**

Conference participants will actually engage in a forum/study circle on "The boundaries of free speech" and discuss the possibilities for similar forums on important public policy issues in academic, public or secondary school libraries.

Speaker: Dr. Jon Rye Kinghorn has been program officer at the Kettering Foundation, for which the National Issues Forums are administered, since 1968.

**1:30 pm-2:30 pm *Holiday Inn*
Ethics of Accessing Networks
 Sponsored by MPLA**



Etiquette and ethics: Miss Manners' twins in the family of excruciatingly correct behavior, or, How to navigate the networks without stepping on toes.

Speakers: Nancy Szofran is systems administrator with Eastern Montana College Library in Billings.

**2 pm-3 pm *Hitching Post*
Book Talking the Wyoming Indian Paintbrush Book Award Nominees for 1992-93.
 Sponsored by WLA/WEMA**

A brief review of the books nominated by students in grades 4-6 for the Wyoming Indian Paintbrush Award 1992-93. Books and promotional materials will be displayed.

Speakers: Marsha Bradbury is chair of the Paintbrush Awards Committee and is the Children's/Young Adult Librarian for the Natrona County Public Library, Casper, WY; Jerry Jones; Carla Howard; and others to be announced will also be presenting.

**2:30 pm-5 pm *Hitching Post*
Wyoming State Library Board meeting
 Sponsored by Wyoming State Library
 Richard Cornia, chair, presiding**

**2:45 pm-4 pm *Holiday Inn*
BCR Network Update
 Sponsored by BCR**

Addressed will be the latest developments with OCLC, DIALOG, BRS, SilverPlatter and Wilson library systems, and answers to questions about how they will affect library operations.

Speakers: BCR representatives Rosario Garza, Jim Hensinger, David Brunell.

**3 pm-4 pm *Hitching Post*
Tough Decisions for Tough Times
 Sponsored by WLA/MPLA**

Many librarians have little experience or training in cutback management of "downsizing." Most have had expanding programs throughout their career and may now be discouraged by seeing programs substantially reduced. Parker draws together the literature and experience of downsizing and combines this with her training and experience to focus on the decisions to be made and strategies which can result in strengthened programs. She gives some "rules of thumb" to encourage those who must go through budget reductions, staff layoffs and termination of programs.

Speaker: Sara Parker is currently Pennsylvania State Librarian and Deputy Secretary of Education in Pennsylvania, and was formerly Montana State Librarian and a regional multitype library coordinator in Colorado, as well as a past president of MPLA.

**3 pm-5 pm *Hitching Post*
Library Services for Young Adults
 Sponsored by WLA Continuing Education Committee**

Information to spark the enthusiasm and suggest techniques to create a positive environment for young adult services including the special needs of young adults, fostering positive staff attitudes towards



services to this age group, and guidelines for building YA collections.

Speaker: Susan Madden, Coordinator of Literacy and Young Adult Services in the King County Library System in Seattle, and the 1987 recipient of the Allie Beth Martin Award, given by the Public Library Association.

3:30 pm-4:30 pm *Laramie County Library*
Genealogy Basics
Sponsored by WLA

Tips on how to begin the genealogical search, the roadblocks along the way, and how to overcome or bypass them. Participants will also have the opportunity to explore a major regional genealogy collection.
Speaker: Jane Somero is associated with Laramie County Library System specializing in genealogy where she works with a staff of volunteers who maintain the Family and Local History room there.

4 pm-4:30 pm *Holiday Inn*
WLA General Membership Meeting
Sponsored by WLA

Dorothy Middleton, president, presiding

4:30 pm-5 pm *Holiday Inn*
MPLA General Membership Meeting
Sponsored by MPLA

Corky Walters, president, presiding

4:30 pm-5:30 pm *Hitching Post*
WEMA Business Meeting
Sponsored by WEMA

Carla Howard, president, presiding

5 pm-5:30 pm *Holiday Inn*
MPLA Interlibrary Loan Interest Group Business Meeting
Sponsored by MPLA ILL Interest Group

Kathy Hansen, chair, presiding

5 pm-5:30 pm *Holiday Inn*
MPLA Technical Services Section Business Meeting
Sponsored by MPLA Technical Services Section

Rosario Garza, chair, presiding

5 pm-5:30 pm *Holiday Inn*
MPLA Government Documents Section business Meeting
Sponsored by MPLA Government Documents Section

Beverly Norton, chair, presiding

5 pm-5:30 pm *Holiday Inn*
Outreach Discussion Group
Sponsored by WLA

Informal exchange of ideas by those involved in outreach services.
Jan Zachry, facilitator

5 pm-6 pm *Holiday Inn*
WLA Continuing Education Committee Business Meeting
WLA Continuing Education Committee

Marcia Wright, chair, presiding

6 pm-8 pm *Hitching Post* **Dinner: \$13**
MPLA Preservation Section Dinner
Sponsored by MPLA Preservation Section

Sharlene Grant, chair, presiding

6 pm-9 pm *Hitching Post* **Dinner: \$13**
Christopher Columbus: Admiral of the Ocean Sea, Viceroy and Governor General of the Indies: A Chautauqua with Dinner.
Sponsored by MPLA Academic Section and Wyoming Foreign Language Teachers

A one hour adventure of highlights in the life of Christopher Columbus as portrayed by William Palmer followed by a question and answer session.

Speaker: William Palmer teaches Spanish at Salisbury State University in Maryland. His interest in Columbus developed while teaching at the University of Salamanca in 1965. Since then, he has traveled to many of the places important in the life of Columbus.

6:30 pm-9:30 pm *Little America* **Dinner: \$15**
Give Children Literature: Lee Bennett Hopkins Author Dinner
Sponsored by Wyoming Reading Association

Lee Bennett Hopkins, one of the nation's most sought-after speakers in the area of children's literature, shares his experiences in the art and need for writing for children. Presentations will also be made to the elementary and secondary students who are winners of this year's young author's awards.

Speaker: Lee Bennett Hopkins, noted children's author, has written many books for children and young adults as well as professional texts and curriculum materials. A proud "piper of poetry," Hopkins is committed to introducing children to the joy of language.

6:45 pm-10:15 pm *Holiday Inn* **Dinner: \$13**
Murder in Libraryland: Dinner and Who-Dun-It
Sponsored by MPLA/WLA

Prepare to be challenged when you come to this participatory murder mystery performance. Working in teams, you will need your wits about you as you grill suspects, decipher clues, ferret out the half truths and blatant lies flying about you...and maybe discover the murderer! All will be revealed in the final moments, but until then...
Speaker: S. Jane Ulrich, director of the Southwest Regional Library System in Durango, CO; director/writer (and characters "Dean Duchess" and "Agnes Christy").

POST-CONFERENCE

SATURDAY, OCT. 3

7 am-7:45 am *Holiday Inn*
WLA Executive Board
Sponsored by WLA

All old and new WLA board members encouraged to attend
Lauren Wilhelm, president, presiding

7:15 am-8:45 am *Holiday Inn* *Breakfast: \$10*
Public Policy Perspectives for the Future: Changing Structures and Relationships
Sponsored by WLA/MPLA

"The traditional libraries in the 21st century: where no librarian has gone before."

Speaker: Kathy Karpan, Wyoming Secretary of State, also serves as the state's Lieutenant Governor and was one of Wyoming's delegates to last year's White House Conference on Libraries and Information Science. Karpan worked for the U.S. Dept. of Commerce and previous Wyoming congressman Roncalio. At the state level she headed the Dept. of Health and Social Services and worked for the Attorney General.

9 am-noon *Holiday Inn* *Fee: full-day, \$55, This program only, \$25, Parker lunch, \$10.50*

Building a Better Board: Increasing Your Effectiveness as a Trustee (Part 1 of a 3-part post conference for trustees and others with interests in the topic)
Sponsored by MPLA

A workshop designed to enable public library trustees and directors to improve the quality and effectiveness of their boards. Focus on running good board meetings, working effectively with the librarian, defining the role of the board in the life of the library.

Speaker: Edward C. Schumacher has worked successfully for 32 years in the nonprofit community nationwide with hundreds of organizations in fundraising and boardmanship, including seminars for libraries in Washington, Alaska, and Idaho.

9 am-11:30 am *Holiday Inn* *Fee: \$15*
Internet Overview

Sponsored by MPLA Academic Section

Lecture and demonstration introducing Internet functions and administrative issues including what the Internet is, what it does, possible problems in gaining access to it, and library services accessible on the Internet. The session is intended for library managers, decision makers, and other library staff members seeking a brief overview and basic demonstration of Internet functions.

Speaker: Connee Chandler, of BCR in Denver, has conducted numerous workshops on Internet throughout the region.

9:15 am-noon *Hitching Post* *Fee: \$30*
Library Services to Homeschoolers
Sponsored by WLA Continuing Education Committee

Part 1 of this program will focus on national trends in homeschooling including the increasing impact on library resources and staff sensitivity for this group, setting framework for part 2 of this workshop.

Part 2 will be a panel presentation aimed at helping participants recognize and understand the needs of homeschool patrons and orient libraries on ways to serve them.

Speakers: Sue Madden, who will present part 1, is coordinator of Literacy and Young Adult Services in the King County Library System in Seattle, and one of the founders of the Washington Coalition Against Censorship. Panel members in part 2 include James LaRue, a county librarian in Castlerock, CO who, along with his wife, homeschools their children; Janet Mader is a parent from Weston, WY who homeschools her children and is an extensive library user. Karen

Butler from Carpenter, WY, has extensively researched and spoken on the topic of homeschooling. Barbara Mechels is Burns, WY, Branch Librarian, a community where homeschooling is popular.

9:15 am-12:15 pm *Hitching Post* *Fee: \$30*
Fun and Games and Science and Literature
Sponsored by WEMA

A workshop for teachers and library personnel with science trade books for children as the focus.

Speaker: Vickie Cobb is an award winning author of many delightful science books for kids, a former science teacher, and host of her own syndicated science television show for children.

Noon-1 pm *Hitching Post*
WLA School Section Business Meeting with Lunch
Sponsored by WLA School Section

Kelly Kraft, chair, presiding

Noon-1:30 pm *Holiday Inn* *Fee: \$10.50*
Libraries for the Next Millennium: Things That Need to Change Now [lunch and presentation] (Part 2 of a 3-part post conference for trustees and others with interests in the topic).

Libraries in the information society need to focus on the central role and mission which has moved them from clay tablets to high speed data transmission. As libraries balance between traditional materials and services, and the new electronic environment in an increasingly complex milieu some behaviors need to change. Trustees and librarians must ensure library success achieving power and resources. **Speaker:** Sara Parker is currently Pennsylvania State Librarian and Deputy Secretary of Education in Pennsylvania, and was formerly Montana State Librarian and a regional multitype library coordinator in Colorado, as well as a past president of MPLA. Recently she has spoken on this topic at several rural library seminars nationally.

12:30 pm-5 pm *American Heritage Center in Laramie (car pool leaving from the Holiday Inn)*
Field Trip to American Heritage Center
Sponsored by MPLA Preservation Section

Car pool excursion to the American Heritage Center, a collection of archival materials on American History at the University of Wyoming, will be coordinated at the Preservation Section Dinner on Friday evening.

Sharlene Grant, MPLA Preservation section chair, tour coordinator.

1:45 pm-5 pm *Holiday Inn* *Fee: \$21, This part only*
Fundraising for Libraries (Part 3 of a 3-part post conference for trustees and other with interest in the topic)
Sponsored by MPLA

The demands on libraries to raise funds have increased over the past five years, and library boards and staffs must know more about private sector fundraising to survive. This basic workshop provides insights, facts and information that can be used to build a successful private sector fundraising program for your library.

Speaker: Edward C. Schumacher has worked with nonprofit agencies including libraries for many years. He is a faculty member of the

Fund Raising School at the Center on Philanthropy at Indiana University and an instructor for the Fundraising Certificate Program at the University of Washington.

Sponsored by MPLA

Old and new board members plus new committee and interest group chairs are encouraged to attend.
Bunny Morrison, president, presiding

1:45 pm-3:45 pm *Holiday Inn*
MPLA Executive Board Meeting



Utah

Information provided by Mary Southwell, MPLA State Representative
Article by Dave Heighton, Supervisor, North American Reference, Family History Library

*Third in a Series:
MPLA's Member States*

These articles are provided by MPLA State Representatives. Their charge is to provide an "article on some aspect of information in each state that sets it apart from the mainstream—someone, something, architecture, whatever that is special and worth sharing." Members are encouraged to send their respective state representative suggestions. The July issue will feature Wyoming.

The Family History in Salt Lake City is for family research. This library houses the world's largest collection of records of deceased people who have lived during the past 400 years.

To gather this information we have microfilmed old registers, manuscripts, and censuses; birth, death, and marriage certificates; and court, property, and church records from throughout the world. This record collection, which grows by 4,000 rolls of microfilm and 400 volumes per month, includes information on over 1.5 billion deceased people. Over 1.6 million rolls of microfilmed records and approximately 320,000 microfiche are available at the library. In addition, the library has over 225,000 volumes of books. These include published family histories, local histories, indexes, periodicals, transcripts, and other research aids.

Trained staff and volunteers work at the library to help people search these records and decipher the clues about their ancestors. On an average day, the library helps more than 2,000 people search for family ties to past generations. An additional 4,000 people search the microfilm in over 1,000 family history centers in 43 countries. Like millions of other people, you may find records of your ancestors here.

In addition to the largest collections of genealogical records in the world, the library has several significant research aids that can help you find your ancestors or records about your family.

FamilySearch™

FamilySearch is a computer system that simplifies searching for your ancestor. This system includes a powerful search and retrieval program and files containing family history information. The files are distributed on compact discs.

The program enables you to search for information in the following files, which are described below in greater detail:

- International Genealogical Index
- Ancestral File
- Family History Library Catalog

International Genealogical Index™

Available in microfiche and compact disc. The 1988 edition of the International Genealogical Index lists the births, christenings, marriages, and Latter-day Saint temple ordinance dates of more than 150 million deceased persons.

The compact disc edition used with FamilySearch enables you to search more than one state or an entire country and by parent's names. Step-by-step instructions on the screen will guide you.

Ancestral File™

Available only on compact disc. Ancestral File is a family-linked file containing genealogies contributed to the Family History Department since 1979. The file contains the names of more than six million persons. You can search this file to see if anyone has already contributed information about your family.

Family History Library Catalog™

Available in microfiche and compact disc. The Family History Catalog describes the records at the library. You can use it to find the book, film, or fiche numbers of the records you want to search. You must have these numbers to locate a record or to request a copy through a family history center.

The compact disc edition simplifies use of the catalog. Using FamilySearch, you can easily find information about the library's holdings. Currently, FamilySearch can search only for surnames, localities, and microfilm call numbers. Step-by-step instructions on the screen will guide you.

The microfiche edition allows you to search for a surname, locality, subject, author, or title. Written instructions and a brief video about using the microfiche edition of the catalog are available at library information desks and at family history centers.

MPLA Welcomes These New Members

Arizona

Sue Adams, Tucson
Arizona Western College Library, Yuma
Sarah Barchas, Hollinger Elementary School, Sonoita
Dee Brozovsky, Glendale
Lyne Edger, Tucson
Brian Franssen, Florence
Helen Maul, Nogales
A. K. Moorhouse, Tempe
Victoria Peters, Tucson
Dr. Barbara Prentice, Tucson
Mary Reichel, University of Arizona, Tucson
Scottsdale Public Library
Liv Stevens, Phoenix-Free Drawing Winner
Tucson Public Library
Patricia Marie Wasbotten, Phoenix

California

John Perkins, Inglewood
Holly Wilkinson, Newport Beach

Colorado

Joan T. Beam, Colorado State University, Ft. Collins
Boulder Public Library, Boulder
Elizabeth Fuseler, Fort Collins
Lorenzo A. Gurreri, Pikes Peak Community College, Colorado Springs
Carla Hardy, Denver
Delores Ann Owen, East Library and Information Center, Colorado Springs
Paul Paladino, Montrose Library District
Lori Salgar, Aurora Public Library
Sarah Stein, Denver Public Library-Free Drawing Winner
Ronnie Storey-Ewoldt, Colorado Springs
Linda Vasenius, Weld Library District, Greeley

Kansas

Chris Colborn, Elkhart
Ruth Cox, Salina
Finney County Public Library, Garden City
Penny Ipson, Rolla
Virginia Johnson, Elkhart
Wayne Price, Fort Hays State University, Hays
Molly Royse, Kansas State University, Manhattan
Milrea Ann Weber, Dodge City

Montana

Rosemary Austin, Blackfeet Community College, Browning
Lois Dissly, Student, Emporia State University, Bozeman
D. Suzanne Goodman, Livingston Public Library
Kathy Huddleston, Butte Central High School, Butte
Tricia Kenney, Billings
Julia Sadler, Billings Clinic Medical Library
Peggy Smith, Billings

Nebraska

Sharon McCaslin, Peru

Kent Stadler, Trustee, Holdrege Public Library
Susan Thornton, Offutt Air Force Base, Omaha
Wayne Public Library, Wayne

Nevada

Denys Baker, Trustee, White Pine County Library, Ely
Diana Baker, Carson City
Wayne Cameron, Trustee, White Pine County Library, Ely
Les Christensen, Trustee, White Pine County Library, Ely
Doug Dashiell, Trustee, White Pine County Library, Ely
Ellen Guerricogoitia, University of Nevada, Reno
Patricia McCarty, Trustee, White Pine County Library, Ely
Metta Nicewarner, University of Nevada, Las Vegas
Lori Williams, White Pine County Library, Ely

North Dakota

Vicky Campbell, Trustee, Minot Public Library
Sue Clark, North Dakota State Library, Bismarck
Cynthia Iverson, University of North Dakota, Grand Forks
San Johnson, Central High School, Devils Lake
Ellen Kotrba, University of North Dakota, Grand Forks
Nancy Maxwell, North Dakota State Library, Bismarck
Jan Miller, North Dakota State University, Fargo

Ohio

Tim Green, London

Oklahoma

Basha Hartley, Norman Public Library
Wayne Hanway, McAlester
Yvonne Hinchee, Shawnee Public Library
Kelly Jennings, Tulsa
Mary Marchant, East Central University, Ada
Robert Segal, Southeastern Public Library System of Oklahoma, McAlester
University of Tulsa, McFarlin Library
Elaine Warner, Oklahoma City

South Dakota

Della Schaffner, Leola Public Library
Richard Van Beek, Aberdeen
V.A. Medical Center, Fort Meade

Tennessee

Loretta Spurling, Knoxville

Utah

Edith Blankenship, Utah State Library, Salt Lake City
Paul Demanett, Provo
Shannon Hoffman, Brigham Young University, Provo
Donald Howard, Orem-Free Drawing Winner
Patricia Knecht, Logan Library, Logan
Jane Saunders, North Ogden
Dorothy Talbert, Retired, Salt Lake County Library
Naida Williamson, Orem
Dian Wismer, Weber State University, Ogden

Wyoming

Melissa Martin, Albany County Library, Laramie
Glenda Williams, Glenrock

Continuing Education

October 14-17

Unfolding the Map: New Directions in Cartography 12th Annual Meeting of the North American Cartographic Information Society

St. Paul, MN

NACIS XII will include a variety of paper and poster sessions, exhibits, cartographic field trips, workshops, and panel discussions with recognized authorities from government, academic, and private organizations. There will be luncheon and dinner speakers in the program as well as visits to local cartographic centers.

For information contact: Jeffrey C. Patton, Department of Geography, University of North Carolina-Greensboro, Greensboro, NC 27412. 919/334-5388.

October 25-27

Thirty Fourth Allerton Institute Evaluating Children's Books: A Critical Look

Graduate School of Library and Information Science, University of Illinois at Urbana-Champaign

The program will begin Sunday evening, October 25, with a panel discussion on "Censorship, negative criticism, glitzy trends, growing publishers' output and other shadows on the landscape of children's book reviewing." The remainder of the Institute will feature "Issues and problems in reviewing nonfiction for children and young adults," "Reviewing and publishing," "Evaluating children's books for whole-language learning," "Reviewing of Spanish language and Hispanic material," "Reviewing multiculturalism," and "Using reviews: librarians, reviews and collection development."

Conference fees are \$380 for those who register by October 2, 1992, and \$415 for those who register after that date. Alumni of the UIUC Graduate School of Library and Information Science are entitled to a \$25 discount. The fee includes registration, room and meals (including snacks).

For more information, please contact: Jeffrey Sands, Program Director, Conferences and Institutes, University of Illinois at Urbana-Champaign, 302 E. John St., Suite 202, Champaign, IL 61820. Or call: 217/333-2881.

Library Science Program VIA Satellite

The University of Arizona Extended University will televise two new courses in library science at approved sites nationwide as part of its continuing video-based program.

Through the GLS/WICHE Cooperative Program, students and librarians living thousands of miles from Tucson can earn the Certificate in School Librarianship, the Undergraduate Correspondence Certificate, or all but 12 units for a master's degree in Library Science from The University of Arizona without stepping foot on the UA campus.

Launched last year, the program offers a minimum of two

courses each semester. Courses schedule for Fall 1992 are:

LiS 504 Foundations of Library and Information Services

Elements of librarianship, historical backgrounds, types of libraries, the role of the library in American life, current issues. LiS 585 Literature for Adolescents

Literature to meet recreational and developmental needs of the junior and senior high school age, including some books for adults. Reviewing and book talks.

The program is sponsored by The University of Arizona Extended University, UA Graduate Library School, Western Interstate Commission for Higher Education (WICHE) Western Cooperative for Educational Telecommunications, and Mind Extension University. Courses are produced by the UA VideoCampus.

Participating states in the GLS/WICHE Cooperative Program to date are Alaska, Arizona, Idaho, Nevada and South Dakota.

For more information, call Merrilyn Ridgeway, program developer, The University of Arizona Extended University, 605/624-UofA, ext. 240 or 1-800/955-UofA.

Education to Go!

SLA Self-Study Programs

SLA's Self-Study Program allows you to study at your own pace, when and where it is most convenient. Choose from six self-study courses:

- **Database Design:** An Introductory Guide to Planning and Creating a Database
- **Grace Under Pressure:** Writing with Clarity, Conciseness, and Impact
- **Owning Your Numbers:** An Introduction to Budgeting for Special Libraries
- **Subject Indexing:** An Introductory Guide
- **Time Management in the Small Library**
- **Winning Marketing Techniques:** An Introduction to Marketing for Information Professionals.

To receive a brochure write: Professional Development Section, Special Libraries Association, 1700 Eighteenth Street, NW, Washington, DC 20009-2508.

Library Career Training Fellowships Available

If you are interested in getting an advanced degree in library and information science, now is the time to make your move.

This year the U.S. Department of Education has awarded \$5 million to 38 institutions of higher education to provide fellowships in library and information science. The 73 grants awarded will support 300 master's, 12 post-master's, and 104 doctoral fellowships.

Individuals interested in HEA II-B fellowships should apply directly to the graduate programs in library and information science currently in U.S. universities and colleges. The institution receiving the grant has the sole responsibility for selecting fellowship recipients.

Take
Advantage of the Best Research
In Our Region

Order while they last!

1991 MPLA/ASLA Joint Proceedings

Phoenix Conference,

published by MPLA Academic Library Section
and ASLA's College and University Libraries Division.

Topics include: Circulation Staff Amiability and Patron Satisfaction, Survey of Research Collection with Preservation, Assessment, Weeding, and Inventory Objectives, The American Memory Prototype, An Exploration of Vandalism/Food/Drink Issues in Academic Libraries, The Harvard Seminars, and Beyond INFOTRAC: Integrating Government Document CD-ROMS into Course Assignments.

Mail orders to: Henry Stewart
William Allen White Library
Emporia State University
Emporia, KS 66801

Price: \$7.50 (includes postage)

Limited numbers of back editions are available for 1986, 1989, and 1990 Proceedings

Grassroots Grant \$250

Baker & Taylor and the MPLA New Members Roundtable are sponsoring a grassroots grant of \$250 to help defray expenses for one library student to attend the joint MPLA/Wyoming Library Association conference in Cheyenne, Wyoming on September 30–October 3, 1992. To be eligible, you must be enrolled as a full or part-time student in an undergraduate or graduate library science program at the time you apply. The winner must be a member of MPLA and the New Members Round Table. Winners will be selected on the basis of professional promise, interest and participation in library associations, leadership ability, and financial need. Applications must be received by August 1, 1992. For further information or to request an application form contact: Suzanne N. Taylor, Colorado State University Libraries, Fort Collins, CO 80523, 303/491-1880.

Publication Statement

The *MPLA Newsletter* is published bi-monthly. Material of regional interest may be submitted to the Editor, Jim Dertien, Sioux Falls Public Library, 201 N Main Avenue, Sioux Falls, SD 57102-0386; telefacsimile number is 605/335-4312. Voice phone: 605/339-7115.

Advertising: There is no charge to MPLA personal or institutional members for Joblist or classified advertisements. Non-members pay \$1.25/line. Display advertisement copy rates are available from the Editor (see address above).

Copy Deadlines: Articles, news information, advertisements and other copy deadlines are the 7th day of all odd-numbered months, with publication thirty days later.

Membership/subscription business: Matters pertaining to individual or institutional membership, address changes, and claims or orders for back issues should be sent to Joseph R. Edelen, Jr., MPLA Executive Secretary, c/o USD Library, Vermillion, SD 57069. 605/677-6082.

Subscriptions:

| | |
|---------|---------|
| 1 year | \$17.00 |
| 2 years | \$32.00 |
| 3 years | \$47.00 |

Back issues of the *MPLA Newsletter* and the *Mountain Plains Library Association Quarterly* are available in microform from Xerox University Microforms, 300 N. Zeeb Rd., Ann Arbor, MI 48106

Printed by the Broadcaster Press, Vermillion, SD

ISSN 0145-6180

SPECIAL JOBLINE INFORMATION

The MPLA Jobline lists jobs available within our eleven-state area at no charge to institutions within this region. Jobs from institutions outside the MPLA region can be listed for \$10/week.

The Jobline updates its listing each Friday morning.

Send listings to Joe Edelen, I.D. Weeks Library, University of South Dakota, Vermillion, SD 57069. 605/677-6082.

JOBLINE #s

The following numbers may be used in calling the MPLA Jobline: 605/677-5757 (nation-wide 24 hours/day) or 800/356-7820 from any of the eleven MPLA states, during the following hours:

Sunday—Thursday 11 pm–8 am each day; Friday–5 pm to Sunday–5 pm your local time.

NEWSLETTER JOBLIST

MPLA institutional members may place job advertisements in this newsletter's Joblist section at no charge.

All other institutions may list jobs at \$1.25/line.

Send Joblist ads to Jim Dertien, MPLA Newsletter, Sioux Falls Public Library, 201 N. Main Avenue, Sioux Falls, SD 57102.

When considering membership in an Association, you naturally ask, "What will it do for me?"



When you join MPLA, we say, "What can we do for you?"

Members of the Mountain Plains Library Association can tell you it is one Association that places member needs first, with outstanding results.

MPLA offer members

- Information exchanges and educational programs on technological developments and innovative library programming undertaken by MPLA libraries;
- Professional Development Grants to members for coursework, institutes and workshops, and independent study;
- Preconference Grants to member state associations to provide special educational opportunities for members and others;
- Through its newsletter, information about continuing education available throughout the region and information about outstanding library programs through news and feature articles;
- Support of regional bibliographic efforts;
- Sponsorship of an annual convention to provide a forum for personal contact among members and with national leaders in the profession;
- Recognition of outstanding contributions to local, state and regional library services;
- Publication of an annual membership directory;
- Access to JOBLINE, a telephone-accessed listing of current job vacancies in our region;
- Special Project Grants, to fund research on ways to develop and improve library services;
- Opportunities to be involved with type of service sections and interest groups, working closely with people who share your common concerns.

MPLA is an eleven-state regional association of libraries and friends of libraries in Arizona, Colorado, Kansas, Montana, Nebraska, Nevada, North Dakota, Oklahoma, South Dakota, Utah and Wyoming, with a primary purpose of improving present and future library services in the Mountain Plains region through development of librarians, trustees, and library employees.

MPLA bases its success on an active, enthusiastic, sharing membership. Where our people are so few and distances so great, each librarian and each library is a vital resource to be shared.

MPLA invites you to make an investment in your future by joining us, and laying the foundation for your career development. And participating with MPLA's present membership — all active leaders in our region's outstanding libraries.

1/2-Price for New Members!

New personal members may join at one-half the rates listed below. Start your eligibility for our professional development grants and other opportunities.

Dues Schedule (Membership year is calendar year)

Personal Membership. Open to anyone interested in library service. \$12.00 per year for those salaried at \$12,000 or less. Add \$1.00 for EACH \$1,000 ABOVE \$12,000 (No ceiling).

Retirees', students', trustees' membership. \$8.00 per year

Institutional Membership. Libraries, business firms & other institutions supporting the Association.

Based on total annual budget.

| | | | |
|---------------------------|------------------|-----------------------------|-----------------|
| Under \$50,000 | \$20.00 per year | 100,000 - 199,999 | 40.00 per year |
| 50,000 - 99,999 | 30.00 per year | 200,000 - 399,999 | 50.00 per year |
| | | 400,000 and up | 100.00 per year |

(With institution membershi you also receive FREE advertising for job openings in the Newsletter.)

State Library Association Membership \$40.00

New Member!

Name _____
 Position/Title _____
 Institution _____
 Business Address _____
 City _____ State _____ Zip Code _____ Phone (____) _____
 Home Address _____
 City _____ State _____ Zip Code _____ Phone (____) _____
 Preferred Mailing Address: Business Home

Section(s): Academic Technical Services **Interest Group(s):** Interlibrary Loan
 NMRT Preservation Children's & School Archives
 Public Library/Trustees State Agency Government Document

(It is important to indicate section preferences if you would like to vote for section officers.)

I am interested in serving on _____ committee(s).
Committees: Awards Finance Membership
 Bylaws & Procedures Nominating
 Continuing Education Public Relations
 Intellectual Freedom Professional Development

Mail to: Joseph R. Edelen, Jr.
 MPLA Executive Secretary
 I.D. Weeks Library, USD
 Vermillion, SD 57069

Personal Membership HALF-PRICE rate enclosed \$ _____.

Professional Development Assistance

Association members are encouraged to apply for grants, mini-grants, and international grants, all of which may be used for the following: formal college or university classroom work, independent study programs, attendance at workshops, conferences or seminars, or participation in any other activity that will benefit libraries and the library community in our region.

Current application deadlines: July 17 & September 18

For more information see your Membership Information brochure or write: Joseph R. Edelen, Jr., MPLA Executive Secretary, c/o I.D. Weeks Library, University of South Dakota, Vermillion, SD 57069. 605/677-6082.

Window to the World: The Challenge of Change

1992 MPLA/WLA Joint Conference
Sept. 30-Oct. 3, 1992 Cheyenne, WY

(one form/person)

REGISTRATION

(please print or type)

NAME _____ (as it will appear on name tag)

INSTITUTION _____

ADDRESS _____
(STREET, CITY, STATE, ZIP)

PHONE(_____) _____ (Where you can be called collect to resolve any problems with your registration)
area code number

Conference Registration

I am a member of (mark all that apply): _____ MPLA
_____ WLA _____ WEMA _____ WRA
(Any of these organizations qualify for membership rates)

| (amount below) | <u>Registration</u> | <u>Before Sept. 4</u> | <u>After Sept. 4</u> |
|----------------|--|-----------------------|----------------------|
| _____ | Member registration- full conference | \$40 | \$54 |
| _____ | Member registration- one-day only | \$26/day | |
| | Please mark day: _____ Thursday _____ Friday | | |
| _____ | Non-member | \$70 | \$70 |
| _____ | Non-member - one day only | \$40/day | |
| | Please mark day: _____ Thursday _____ Friday | | |

NOTE: payment or voucher must be postmarked by Sept. 4 to qualify for early rates. Checks payable to MPLA/WLA joint conference. Meal tickets are limited, so sign up now. No refund made if registration form error less than \$10. Refunds must be requested in writing before Sept. 23. There will be a \$10 service fee on refunds. For more information, call conference chair Corky Walters, 307-777-7281.

Preconference Registration

Grant Writing \$10 _____
Info Power(am and pm) \$26 _____
Info (pm only) \$6 _____
Using Statistics \$14 _____
Marketing \$9 _____
Theme-based lit. \$6 _____

Postconference Registration

Internet \$15 _____
Trustess/Library Team
full day \$55 _____
AM only \$25 _____
Parker (lunch only) see meals below
PM only \$21 _____
Home schooling \$30 _____
Fun, Games, Sci., Lit. \$30 _____

Meals

| <u>Wednesday</u> | <u>Friday</u> |
|---------------------------------------|---|
| Info. power lunch \$8 _____ | Hitching Post cont. brkfst.(free) _____ |
| Holiday Inn lunch buffet \$8.50 _____ | Legislative lunch \$8 _____ |
| Exhibit reception (free) _____ | Children's author lunch \$8 _____ |
| | Lee Bennet Hopkins dinner \$15 _____ |
| <u>Thursday</u> | Murder mystery dinner \$13 _____ |
| Holiday Inn cont. bkfst. (free) _____ | Columbus dinner \$13 _____ |
| Academic lunch \$8 _____ | Preservation dinner \$13 _____ |
| MPLA/WLA awards dinner \$17 _____ | |

| <u>Saturday</u> |
|--|
| Public policy perspectives/ Karpan brkfst \$10 _____ |
| Change lunch w/Sara Parker \$10.50 _____ |
| WLA School section lunch \$8 _____ |

Conference fees \$ _____
Preconference fees \$ _____
Post conference fees \$ _____
Meals \$ _____

TOTAL ENCLOSED
\$ _____

**MAIL REGISTRATION FORMS & FEES BEFORE
SEPT. 4 (early rates) or SEPT. 25 (regular rates) TO:**

Joe French
MPLA/WLA Conference
c/o Wyoming State Library
Supreme Court Building
Cheyenne, WY 82002

Note: Please help us by marking the conference sessions you plan to attend on the back of this registration form.

Please indicate which programs you are considering attending:

Preconference - Wednesday, Sept. 30

- Successful Grant Writing
- Information Power, part 1
- Playing the Numbers Game
- Information Power, part 2
- Marketing and Customer Service
- Theme-based Literature Units
- AECT Update

Thursday, Oct. 1

- Free Continental Breakfast
- National Trade Databank
- Solinus Society
- Summer Reading Program Sharing
- President's Program
- School/Public Library Programming and Cooperation
- Getting Your Documents into an OPAC
- High Fiber Serials on a Low-fat Budget
- The Future of Networks
- Collection Development
- Access: To Morristown and Back Home
- Successful Storytimes for Very Young Children
- MPLA Academic Research Forum
- CD-ROMs and Reference Service
- Creative Staffing for the 21st Century

Friday, Oct. 2

- Free Continental Breakfast
- It's a Jungle Out There!
- The Newest and Best in Children's Literature
- The Virtual Library
- Sowing and Weeding
- Americans With Disabilities
- Libraries and the Political Process
- National Issues Forums and Libraries
- Ethics of Accessing Networks
- Book Talking for Indian Paintbrush Book Award
- BCR Network Update
- Tough Decisions for Tough Times
- Library Services for Young Adults
- Genealogy Basics
- Outreach Discussion Group

Post-Conference, Saturday, Oct. 3

- Public Policy Perspectives for the Future
- Building a Better Board
- Internet Overview
- Library Services to Homeschoolers
- Fun and Games and Science and Literature
- Libraries for the Next Millennium
- Field Trip to American Heritage Center
- Fundraising for Libraries

MENUS

Wednesday

| | | |
|-------------------|---|--------|
| Information Power | Cold cut plate with salad, relishes on lettuce, dessert, beverage. | \$8 |
| General buffet | Deli lunch including cheese, meats, salads, fruit, breads, dessert, beverage. | \$8.50 |

Thursday

| | | |
|----------------|--|------|
| Academic lunch | Chicken fettucine, salad, dessert, beverage. | \$8 |
| Awards dinner | Prime rib, potato, vegetable, salad, rolls, dessert, beverage. | \$17 |

Friday

| | | |
|--------------------------|---|------|
| Children's Author | Tomato stuffed with tuna, bread, dessert, beverage. | \$8 |
| WLA Legislative luncheon | Polynesian chicken salad, rolls, fruit cup, dessert, beverage. | \$8 |
| Columbus dinner | Orange & walnut glazed breast of chicken, rice pilaf, salad, dessert, beverage. | \$13 |
| Hopkins dinner | Wyo.hunter chicken, baked potato, vegetable, rolls, sundae, beverage. | \$15 |
| Preservation dinn | Orange & walnut glazed breast of chicken, rice pilaf, salad, dessert, beverage. | \$13 |
| Murder Mystery dinner | Pasta primavera, salad, dessert, beverage. | \$13 |

Saturday

| | | |
|-------------------------|---|------|
| Public Policy breakfast | Western breakfast buffet. | \$10 |
| Parker lunch | Pita pocket with tuna, soup, dessert, beverage. | \$8 |
| WLA School | French dip sandwich | \$8 |

ACCOMMODATIONS

Nearly all conference programs, meetings and functions will be held at the two conference hotels: the Hitching Post Inn and the Cheyenne Holiday Inn. Since there will be several conferences in Cheyenne at this time, **hotel reservation before Sept. 13 is strongly encouraged.**

Most **ACADEMIC LIBRARY** and **SCHOOL LIBRARY/MEDIA PROGRAMS** will be held at the Hitching Post Inn.

Most **PUBLIC LIBRARY** and **TRUSTEES' PROGRAMS** will be at the **HOLIDAY INN.**

EXHIBITS will be at the **HITCHING POST INN.**

These hotels are not within walking distance, and although free conference buses will run at frequent intervals between them, conference attendees are strongly encouraged to stay at the hotel where most programs for their interest group will be held.



HITCHING POST INN
Cheyenne, Wyoming

1-800-442-2459 In-state
1-800-221-0125 Out-of-state



Name _____
 Address _____
 City _____ State _____ Zip _____
 Firm/Convention/Event MPLA/WLA Library Convention
 Please send \$25 with room request or Credit Card # _____ Credit Card # _____
(Deposit will be refunded if room is cancelled 24 hours prior to reservation date.)
 Please reserve the following for _____ Person(s). Exp Date _____
 Arrival _____ Departing _____ 19____
 _____ Single (1 bed, 1 person) _____ Double (1 bed, 2 persons)
 _____ Double (2 beds, 2 persons) _____ 3 persons _____ 4 persons
 _____ Family Room (4-6 people) _____ No. of persons
 _____ Suite (information available upon request)

Check-In Time 2:00 p.m./Check-Out Time is Noon.
(If possible, we will have room ready earlier.)

MPLA/WLA Library Conference RATES: \$40 single or double
(add 5% sales & 2% lodging taxes) **\$42 triple or quad**

For reservations, clip & mail to: Hitching Post Inn, PO Box 1769,
Cheyenne, Wyoming 82003-1769

Cheyenne *Holiday Inn*

Please TYPE or PRINT
 I WILL ATTEND _____ CONVENTION
 NAME _____ ADDRESS _____
 CITY _____ STATE _____ ZIP _____ PHONE _____
 ARRIVAL DATE _____ DEPARTURE DATE _____
 6 PM ARRIVAL _____ GUARANTEED ARRIVAL _____ (All guaranteed arrivals must be guaranteed with an advance deposit or Credit Card Number)
 CREDIT CARD NO _____ EXP. DATE _____
 ADDITIONAL PERSONS SHARING ROOM _____
 ACCOMMODATIONS DESIRED _____ Single _____ Double _____ Dbl/Dbl
(1 bed, 1 person) (1 bed, 2 persons) (2 beds, 2-4 persons)
 TOTAL NUMBER OF ROOMS _____

MPLA/WLA Library Conference RATES: \$39/room (1-4 people)
(add 5% sales & 2% lodging taxes) **\$5 rollaways**

For reservations, clip & mail to: Cheyenne Holiday Inn, Reservations Dept.
204 W. Fax Farm Road, I-80 & U.S. 85
Cheyenne, Wyoming 82007



MPLA Newsletter
414 E. Clark
c/o Univ. of South Dakota Libraries
Vermillion, SD 57069

Bulk Rate
Non-profit Org.
U.S. Postage Paid
Permit No. 63
Vermillion, SD 57069

- Opportunities for professional involvement
- Continuing education programs
- A forum for the exchange of ideas
- Professional Development Grants
- Support of regional library efforts
- News of people and programs in member states

