

June 1993, VOL. 37, NO. 6

MPLA Newsletter

ARIZONA COLORADO KANSAS MONTANA NEBRASKA NEVADA NORTH DAKOTA OKLAHOMA SOUTH DAKOTA UTAH WYOMING

Annual Conference Issue



Building Bridges

CLA/MPLA Joint Conference

October 1-4, 1993

Welcome to Snowmass



May 17, 1993

Dear CLAIMPLA member:

I want to take this opportunity to invite you to our joint conference this October in Snowmass. Our conference committees have planned an exciting program with plenty of chances for professional growth, collegial interaction and personal renewal. The setting is incredible and our accommodations are first class.

Register as soon as you can for your place in this wonderful event. See you in Snowmass!

Yours truly,

Rick Friddle,
President CLA

President's Message- Bunny Morrison

Since "Building Bridges" is the theme for the ensuing year, build a bridge from your place to Snowmass at Aspen, October 1-4. Indeed, you can get there from wherever "here" is. Once there you will find exhibits, Keynote speakers- Ivan Doig, Gary Strong and Clay Jenkinson (John Wesley Powell)- and fellowship with friends from across the eleven state region.

The building process begins on October 1 with several preconference sessions:

- 1) Help, a librarian's guide to public computer operations;
- 2) Creative conflict management; and
- 3) Improving reference service.

This is simply a sampling of all that is planned. Following these sessions will be the exhibitors' reception and dinner which should prove delightful, as will the mingling of those who will collaborate on bridge building.

Do keep in mind that, as fledgling builders, some energy ought to be conserved for the western barbecue awards luncheon, a sumptuous Snowmass Village dinner, and the country western dance on Saturday. Many decisions and choices will be made during these four days so that success is insured in bridge building. Do let us thank Stephanie Liptak who has put together a conference with intrigue for everyone, as well as Robbe Sokolove for the excellent selections and scheduling of workshops and presenters.

I am looking forward to seeing all of you in beautiful Snowmass where we will build bridges together!

WILSON BUSINESS ABSTRACTS

The Difference is in the Data

Wilson Business Abstracts

is the only business database to provide cover-to-cover indexing and abstracting for the 350 most-demanded business periodicals.

Guided by world-renowned Wilson indexing and well-written, high-quality abstracts, your patrons will find answers to today's tough business questions quickly and conveniently.

WBA incorporates all of the traditions that have made Wilson the leading information producer for nearly 100 years: quality, comprehensiveness, accuracy, reliability, and service. No competing reference publisher can match this tradition of excellence.

Compare WBA to any other business source on the market and see for yourself why high quality, accurate data really does make a difference.



**More Abstracts
More Citations
More In-Depth Coverage
More Modes of Access
More Accurate
More Cost-Effective**

"Wilson Business Abstracts is a solid business information resource for libraries or business information centers that need to keep abreast of developments in the general business press."

—INFORMATION TODAY

Wilson Business Abstracts:

- ◆ Cover-to-Cover Indexing and Abstracting of the 350 Core Business Periodicals
- ◆ 200,000 Fact-filled Abstracts with Your Initial WILSONDISC CD-ROM Subscription
- ◆ Monthly CD-ROM Updates
- ◆ Weekly Online Updates
- ◆ Free Online Access to the Most Recent Data with a WILSONDISC Subscription
- ◆ No-charge Networking and Remote Access with a WILSONDISC Subscription
- ◆ Over 57,000 Subject Terms for Immediate Access
- ◆ Ten Years of Comprehensive Coverage at an Affordable Price.*

For a no-risk, no-cost 90-day WBA trial, or a free demo diskette, call toll-free (800) 367-6770, Ext. 2722. Outside of the U.S. and Canada, call (718) 588-8400.

* Indexing Coverage from July 1982. Abstracting Coverage from June 1990.

THE H. W. WILSON COMPANY

950 UNIVERSITY AVENUE, BRONX, NY 10452



Recommended Conference

Accommodations

Snowmass at Aspen

Hotel Wildwood:

A small hotel with grand hospitality. Located in the heart of Snowmass adjacent to the Village Mall and the Conference Center. A 149 room, full service resort hotel offering in-house amenities such as outdoor heated pool, jacuzzi and saunas. Guest rooms provide mini-refrigerators, coffee service, remote color cable TV, plus a complimentary airport shuttle. Meeting and catering facilities for up to 150 people, plus the locally renowned Pippin's Steak and Lobster Restaurant with unmatched service for an unforgettable experience.

Lodge Room \$79.00 per room per night single/double

Silvertree Hotel:

The Silvertree Hotel is a year round resort conference facility dedicated to the needs of the meeting attendee. On property amenities include 262 luxurious rooms, spacious health club, nine premier suites, two heated swimming pools, whirlpool, two restaurants, and room service. Handsome appointments and breathtaking views create an environment that is a peaceful retreat from the business of the day.

Lodge Room - \$75.00 single/double (150 rooms available)

Timberline:

The only deluxe full-service condominium complex in the heart of Snowmass. Condominiums range in size from studios to three-bedroom; loft units are available. Let us take care of your every need with services that include daily maid, front desk, bellmen, courtesy airport transportation, the largest jacuzzi in Snowmass (pool-size), sauna and guest laundry. All units have balconies/patios, BBQ grills and color TV with HBO; fireplaces in all units except studios.

\$55.00-Studio; \$65.00-Studio/Loft; \$75.00-One Bedroom; \$85.00-One Bedroom/Loft; \$100.00-Two Bedroom; \$110.00-Two Bedroom/Loft; \$150.00-Three Bedroom.

PLEASE ADD CURRENT TAX AND CIVIC ASSESSMENT OF 11.48% Taxes and civic assessment subject to change.

Call for more information or to reserve rooms: 1-800-598-2004

Snowmass at Aspen

Weather - Warm fall days and cool evenings (and occasional late afternoon showers) add up to weather that will be very enjoyable. Daytime temperatures in the high 60's to low 70's with evening in the 40's being the norm. Be prepared with a sweater and a heavier jacket to comfortably enjoy the full range of day and evening activities. Comfortable and informal clothing is recommended for all events.

Altitude - Snowmass Village sits at 8,200 feet above sea level. The cool dry mountain weather and fresh air also bring certain considerations. The thin air can require a period of adjustment (even if you have only gained 1,000 feet in elevation). High altitude sickness symptoms may include, among others, headaches, shortness of breath, even nausea. You can expedite your adjustment by getting plenty of rest, limiting alcohol consumption and heavy meals, drinking lots of water and limiting extreme exercise the first day or two or until you are acclimated.

Sun - The thin air intensifies the effects of the sun, so hats and sunglasses are recommended, as is a good sun-screen. The low humidity contributes to a dry and comfortable feeling, no matter what the weather, but lip balms and moisturizing lotions are recommended.

Clothes - Dress in the Snowmass and Aspen area is **casual**. You will rarely see a tie or have a restaurant require a certain level of dress. The Colorado Library Association/Mountain Plains Library Association conference in October will be casual dress only. This is not the place for suits or heels!

We're celebrating our 20th anniversary with savings for you



SIRS CD-ROM Workstation includes:

- 386SX (33MHz) computer with two megabytes RAM and 130-megabyte hard drive
- High resolution SVGA color monitor
- Internal CD-ROM drive
- Low noise dot-matrix printer
- DOS 5.0 and Microsoft Extensions software
- One-year warranty with swap-out service
- SIRS Combined Text & Index CD-ROM

Now Just \$3,000



Twenty Years of SIRS

Social Issues Resources Series, Inc. • P.O. Box 2348 • Boca Raton, FL 33427-2348
Toll-free: 1-800-232-SIRS • Fax: 407-994-4704

Microsoft Extensions is a trademark of Microsoft Corp.

AUTOMATION NEWS

EDI IS NOTHING NEW AT EBSCO.

BIRMINGHAM, AL—We've been doing EDI (Electronic Data Interchange) since long before computer-to-computer communication was defined by a stylish acronym. Our EBSCONET® Online Subscription Service has been processing electronic orders

and claims sent from customer terminals since 1980. We've also been accepting online files of orders and claims from major library systems for years.

And EBSCO is committed to the future of EDI, including active involvement in the development of EDI standards by serving on international committees. We've not only adopted the new X12.856 (ICEDIS-approved) format for dispatch data but have begun displaying the data on EBSCONET. And we are currently testing SISAC draft formats for invoices and claims.

If you're interested in working with a serials vendor with eons of experience with electronic communication, give us a call today.

EBSCO
SUBSCRIPTION SERVICES

2801 Youngfield St.
Suite 120
Golden, CO 80401-2264
(303) 237-1753
(800) 727-1077
FAX (303) 237-1752

EDI.
EBSCO DOES IT!

Transportation

TRANSPORTATION BY AIR:

Major airlines connect at Denver's Stapleton Airport with Air Wisconsin, and United Express, 800-241-6522, or call Resort Travel, 800-525-6200. Each airline has several flights daily to Aspen/Snowmass in pressurized, 50-passenger planes, or 84-passenger United Express BAe 146 jets. Courtesy van, taxi, limousine service and rental cars are available at the airport. Major airlines also fly directly to Grand Junction where connecting ground transportation is available. Continental and Continental Express have joined with the Snowmass Conference Center to offer special airfares (lower than Continental prices available by any other means) when you attend your conference at Snowmass during 1993. These special airfares will be available to you for travel throughout three days pre/post your event.

SPECIAL AIR TRANSPORTATION

The Continental Airlines offer represents a 45% discount off unrestricted standard coach fares and 5% off any available restricted Max and Super Saver fares. You may purchase your tickets from Snowmass Central Travel at 800-598-2004, your local travel agent, or Continental will mail them to your home or office.

REDUCED AIR FARES AND CAR RENTAL

Organizers, Etc. has joined with MPLA to provide special low airfares and car rental rates (Denver and Aspen) for the 1993 MPLA/CLA Joint Conference in Snowmass. They can also assist you with other special travel and vacation activities throughout Colorado. MPLA will receive a percentage of all conference-related revenues booked through Organizers, Etc. Call 1-800-238-2754 to get the lowest fares available for conference travel and help MPLA in the process.

BY TRAIN:

Amtrak, 800-USA-RAIL (872-7245), or in Denver, 534-2812, has a spectacularly scenic route from Denver to Glenwood Springs. Taxis and limousine service to Aspen/Snowmass as well as rental cars, are available.

Fall Recreational Activities

The Village Concierge wants to welcome librarians to Snowmass Village this October. We have provided a list of recreational activities which are available for you to take advantage of during your stay. The trips described below are available each day during your visit to Snowmass Village. If you wish to make a reservation or have questions about these activities, or any other question that the Village Concierge might be able to help you with, please call us at (303) 923-4544 or 1-800-282-7238.

HALF DAY RAFT TRIPS on the Colorado or Roaring Fork Rivers are offered daily, morning or afternoon. These trips last approximately 5 to 6 hours. **Shoshone Rapids:** Nestled in the deep gorge of beautiful Glenwood Canyon, the Shoshone Rapids section of the Colorado River comes to life in early July. These rapids, with names like "Superstition," "The Wall" and "Pinball" create an exhilarating section of unforgettable white water. A.M. departure time - 8:00 am. P.M. departure time - 1:00 p.m. Prices: \$54.00/adults; \$46.00/child 12 to 15. **Colorado River:** The Colorado River provides a great half day river trip. It is a combination of delightful rapids, interspersed with calm water stretches. The trip is highlighted by a roller coaster ride through "South Canyon Rapids." It is suitable for first time rafters, families with children (as young as six), and anyone who wants a fun, moderate river trip. A.M. departure time - 8.30 a.m. P.M. departure time - 1:00 p.m. Prices: \$50.00/adults; \$43.00/children 6 to 15.

The **DOWNHILL BICYCLE TOUR** to Maroon Lake or Ashcroft Ghost Town is another fun and unique activity. This bicycle tour takes you downhill through some of the most beautiful scenery in Colorado. It is also a chance to explore the old ghost town of Ashcroft or take a quiet stroll to the shores of beautiful Maroon Lake. You will find plenty of time to take pictures of your favorite flowers and to relax along the way, enjoying a delicious meal amid the splendor. We provide you with transportation to the top of your downhill descent. From there, you and your guide jump onto state-of-the-art "mountain bikes," and cruise back down into Aspen. It's all on paved roads, and it's unbelievably fun! The tour is approximately 4 hours, and costs \$44.00/adults, and \$38.00/child 12 to 15. Trips depart daily at 8:00 AM and 1:00 PM.

The **GOLD HILL MINE TOUR** travels up the back side of Aspen Mountain, traversing through verdant meadows and blue Spruce forests. Once on top, we skirt along the crest of Gold Hill Ridge, affording fantastic views of the Continental Divide on the one side, and the Montezuma Basin area on the other. Finally, we head back down through Little Annie Basin, past old mines and cabins dating back to Aspen's earliest days. Wildflowers are in abundance, and there is ample opportunity for picture taking and strolling. A delicious picnic is served at the top of the mountain.

Other **BACKCOUNTRY JEEP EXCURSIONS** include a picnic on the top of Elk Camp on Snowmass mountain, a trip up scenic Woody Creek past the old lumber and mining town of Lenado to the summit of Larkspur Mountain where another delicious picnic is served, and others. To find out more, call (303) 923-4544.

FLY FISHING in the "High Country Wilderness" is quite a unique experience for the fishing enthusiast. Crystal clear streams offer wild rainbow, brook and brown trout. Fly fishing clinics are offered daily. Fishing rods, flies, and transportation are included; fishing license is extra. One angler for a half day is \$150, and two anglers for a half day are \$185. Full day trips are also available at \$185 for one angler, and \$225 for two anglers (lunch included).

There are few pleasures as grand as a **HOT AIR BALLOON RIDE**, drifting slowly over the earth in an open basket. It's romantic. It's breathtaking. It's a journey that you will never forget. The balloon rides commence at dawn. Please allow approximately 3 hours (1-1.5 hours of air time). The price is \$160 per person.

The **REDSTONE CASTLE TOUR** and lunch is available for \$45/person. It includes a one hour tour of a majestic, turn-of-the-century mansion, which is nestled high in the Colorado Rockies. This was the home of John Osgood, a 19th century captain of industry. It was built to impress such visiting peers as J.P. Morgan, John D. Rockefeller and President Teddy Roosevelt. An afternoon luncheon is served. Transportation to and from the Castle is included.

Insider Tips

Discovering Snowmass on a Budget

As today's travellers seek a quality vacation experience that won't empty their pockets, we've come up with a list of activities and other deals that make having a great time in Snowmass Village effortless, even on a budget. All of the FREE activities, along with the many specials at our world class restaurants and local watering holes, make it easy for frugal vacationers to enjoy the year round splendor that Snowmass has to offer. (Check times; they are subject to change; schedules are tentative!!) Some of the activities may not be available in the fall.

Winter

FREE tour of the Krabloonik Dog Sled Kennels.

FREE cross country skiing at the Snowmass Club Nordic Center.

FREE tours of the Anderson Ranch Arts Center and Gallery.

FREE magic and comedy shows nightly at the Tower Magic Bar.

FREE live music at the Timbermill during Apres Ski.

FREE live entertainment at Cowboys Restaurant (5 days a week).

FREE live entertainment during Apres Ski at the Brothers' Grille.

FREE swimming pools and hot tubs available throughout the village or guests staying in Snowmass Village. Public pool and hot tubs located one level below the mall; open to anyone.

Summer

FREE Rollerblade and mountain bike clinics.

FREE Arts and Crafts classes, guided nature hikes, and campfire storytelling.

FREE Snowmass Summer of Music concert series slopeside at the outdoor amphitheater.

FREE magic and comedy shows nightly at the tower Magic Bar.

FREE tours of the Anderson Ranch Arts Center and Gallery.

FREE swimming pools and hot tubs available throughout the village for guests staying in Snowmass Village. Public pool and hot tubs located one level below the mall; open to anyone. FREE live entertainment at Cowboys Restaurant (Fri/Sat 8:30 pm).

News From Aspen

YEAR-ROUND FISHING

Snowmass, with both the Frying Pan and Roaring Fork Rivers, offers some of the greatest trout fishing and angling anywhere in Colorado. These two rivers, designated as Gold Medal Waters, stream over 60 miles of easy access fishing year round. "This is definitely one of your more beautiful sports," says Bob Beasley, professional guide for Oxbow Outfitters in Snowmass Village. He explains, "The species of trout we see here are just beautiful. Even people who do not think of fish as pretty creatures are amazed at the colors they see on the trout. This is why we really encourage catch and release in this pristine area."

"Fishing is a wonderful wilderness experience. Casting a fly rod involves a lot of action and thinking," says Beasley. Watching your line drift and paying attention to feeding patterns are just some of the engaging tactics involved.

Enthusiastic Beasley maintains that in the crystal clear waters of the Frying Pan and Roaring Fork Rivers you can actually see the fish you are trying to catch!

Although fly fishing is most common, spinning rods and reels are still seen in action catching an abundance of Rainbow and Brown trout. In addition to glorious river fishing, Snowmass has nearby Grizzly Lake, Reudi Reservoir, and of course the famous Maroon Lake that all but guarantee anyone a catch. Guide services are available, providing everything from fishing rods to waders for the never-ever beginner as well as the weathered expert.

BIKING IN SNOWMASS

Snowmass Village, 12 miles from Aspen, welcomes mountain bikers, road racers and recreational riders with a wealth of cycling opportunities. Offering more than 24 miles of mountain biking trails on this famed ski mountain, Snowmass also has nearly 7 miles of paved trails that provide scenic excursions through the valley, rimming the Snowmass Club's championship golf course along the way.

Besides riding the face of Snowmass ski area, trails mountain bikers shouldn't miss include Highline, Gracie's, Wildcat, the new Rim Trail, and Parcours. Edging the valley, all feature impressive views. For diehard mountain bikers (and not the faint of heart), the 13 mile Government Trail offers spectacular mountain and village panoramas as it winds from Snowmass to Aspen's Tiehack/Buttermilk Mountain. Three additional miles, featuring both easy and challenging terrain, connect Snowmass to Aspen through the natural splendor of Owl Creek. Rolling ranch land and unrestricted views of Aspen Mountain and Independence Pass make this trip a definite for "camera bugs" and well worth the effort. Recreational road riders should also try downhill bike tours. Guests are taken to a high mountain lake, served a gourmet lunch, and then guided down a paved, gently graded road. It's another photo opportunity not to be missed. For more information on Snowmass biking, call 800/SNOWMASS, or the Town of Snowmass Village at (303)923-2777.

Kid's Activities: A children's program of activities will be available if there is enough interest. A minimum of 20 children is required. More information will be forthcoming or call 1-303-923-2000, ext. 236.

Business Meetings

Friday, October 1

MPLA Board Meeting 6-9:00 p.m.

Saturday, Oct. 2

MPLA Interlibrary Loan Interest Group Business Meeting 7-7.50 a.m.
CLA/MPLA Preservation Business Meeting & Breakfast 7-8:50 a.m.
CLA/MPLA New Members Round Table Business Meeting & Breakfast 7-8:50 a.m.
CLA/MPLA Interlibrary Loan Discussion Group 8-8.50 a.m.
MPLA Children's & School Section Business Meeting 8-8:50 a.m.
MPLA State Agencies Cooperatives and Systems Business Meeting 8-8:50 a.m.
MPLA Academic Section Business Meeting 8-8.50 a.m.
Conference Committee Meeting 8-8.45 a.m.
CLA Paraprofessional Division Business Meeting 11-11.50 a.m.
CLA TSAD Business Meeting 11-11:50 p.m.
MPLA General Business Meeting 5-6:00 p.m.

Sunday, Oct. 3

MPLA Professional Development Grants Committee Business Meeting 7-7.50 a.m.
Colorado Library Educational Foundation Board of Directors Business Meeting 7-7.50 a.m.
CLA/MPLA Government Documents Business Meeting 8-8:50 a.m.
CLA Trustees/Friends Division Business Meeting 8-8:50 a.m.
Conference Committee Meeting 8-8:45 a.m.
CLA Public Library Division Business Meeting 12-12:50 p.m.
CLA/MPLA Trustees & Friends Brown Bag Networking Luncheon 12-1:50 p.m.
MPLA Public Library/Trustees Section Business Meeting 1:30-1:50 p.m.
Youth Educational Services Division Business Meeting 1-1:50 p.m.
MPLA Technical Services Section Business Meeting 3-3:50 p.m.
CLA Membership General Business Meeting 4-5:00 p.m.
Colorado Libraries Staff Meeting 5-6:00 p.m.

Monday Oct. 4

MPLA Board Meeting 7-8:50 a.m.
Conference Committee Meeting 8:30-8:45 a.m.
MPLA Bylaws Committee 9-9:50 a.m.
CLA Board Meeting 1-2:00 p.m.

Building Bridges

CLA/MPLA Joint Conference

Preconference Schedule

Friday, October 1

REGISTRATION 8-7:00 p.m.

THE GATHERING PLACE: Especially for CLA/MPLA New Members

Daily—Silvertree Hotel

Reader's Advisory: Connecting Books and People 9:00 a.m.-12:00 p.m.

Corky Walters
Susan Simpson
Marcia Wright | Participants will receive advice and practice in: the importance of reader's advisory, conducting a successful reader's advisory interview with a patron, utilization of reader's advisory tools such as the Fiction Catalog and Genreflecting, and marketing the library's fiction.

Making Children's Services Accountable: Techniques of Measurement and Evaluation for Public Library Service to Children 10:00 a.m.-12:00 p.m.

Pam Sandlian | The cycle of planning, implementation & evaluation is not new to anyone in library services. Identifying the tools for measuring and evaluating programs provides strategic information for future decision making as well as a means for assessing the success of our work. This preconference is based on the PLA development of Output Measures for Public Library Service to Children, written by Virginia Walter and presented under the guidance and cooperation of the Association for Library Services to Children.

Picking Up the Pieces: Preservation for Circulating Collections 10:00 a.m.- 4:00 p.m.

Nancy Carlson
Schrock | The collections of Colorado's libraries are being used more heavily and book budgets are shrinking. Preservation can provide cost-effective relief. The goal of this program is to provide basic information about setting preservation policy, and then maintaining and repairing circulating collections, including public library materials. All participants will be given the resources necessary to help them begin or upgrade a repair program in the library.
The morning session, "Defining Collection Needs," will address: the components of a collections maintenance program, evaluating needs, and setting preservation policy. The afternoon session is devoted to "Setting up a Program." Topics addressed will include decision making,

Conference Grant for Library Students

A grassroots grant of \$250 is available to help defray expenses for one library student to attend the annual Mountain Plains Library Association/Colorado Library Association conference to be held October 1-4, 1993 at Snowmass, Colorado. Any unused funds may be applied to the student's library education.

Sponsored by Baker & Taylor Books and the New Members Round Table of the American Library Association since 1978, these grants provide library students with an opportunity to experienced the educational benefits of a professional conference.

Applicants must be enrolled as full- or part-time students in an undergraduate or Master's degree program at an accredited college or university; or in a library tech or media program at an accredited two or four year college. Recent graduates of library programs are not eligible to apply. The recipient of the grant must be a member of MPLA and its New Members Roundtable at the time of the conference and attend at least two days of meetings.

For additional information or to request application forms contact: Robert Shupe, Mohave Community College Library, 1971 Jagerson Avenue, Kingman, AZ 86401. (602) 757-0881. The deadline for applications is July 26, 1993.

setting up and staffing a repair facility, and an overview of techniques for collections maintenance and repair of circulating materials.

Nancy Schrock is a conservator in private practice in Winchester, Massachusetts. She recently completed a comparative statistical condition survey of book collections in four Massachusetts public libraries which will serve as a basis for state-wide preservation planning.

Learning Styles 10:00 a.m.-12:00 p.m.

**Dr. Beverly
Title**

Research has shown that people with similar learning styles speak in complimentary terms of each other; conversely, people of different learning styles tend to think less kindly of each other. Is it just "human nature" to like people who think like we do? In this session participants will explore their own styles and begin to understand the up and down sides of the different styles. Expect to come away with a much expanded knowledge of yourself and others and have a lot of fun in the process!

Beverly Title holds a Ph.D. in conflict management. She is an educator who has taught at every level from kindergarten through graduate school and specializes in working with challenging teenagers. Currently, she coordinates programs for at-risk students in the St. Vrain Valley School District.

Bridging the Gap: a Guide to Effective Library/Vendor Relations 10:00 a.m.-4:00 p.m.

**Carol Pitts
Hawks**

Carol Pitts Hawks will discuss how to select a serials vendor that will best suit the needs of various libraries. A reactor panel of librarians from various sizes and types of libraries and a vendor representative will respond to the keynote address. The afternoon will be composed of several breakout sessions dealing with serials issues: preservation of serials including selection of a binder; document delivery services; changing automated systems.

Carol Pitts Hawks has been Head, Acquisition Department at the Ohio State University Libraries since 1987. She has served as editor-in-chief of the journal, Library Acquisitions: Practice & Theory since 1990.

Reading the Water/Flailing the Line - Part III (A Librarian's Excursion into the World of Fly Fishing & It's Literature) 7:30 a.m. - 4:00 p.m. (Participants will be contacted regarding arrangements)

**Jim Dertien
MPLA
Newsletter
Editor**

Previously held at MPLA conferences in Billings and Salt Lake City, this program combines sport, relaxation and an opportunity to learn more about collection development in a specialized area. You will spend a day on the Fryng Pan and/or Roaring Fork rivers with a professional guide (two participants per guide) and have the opportunity to learn flyfishing or improve your skills. You will catch fish. Your fee covers use of over \$800 worth of equipment, waders, vests, etc., guide services and instruction, and lunch. It will cost an extra \$5.25 for a license plus something for flies you ruin. Guides provided by Taylor Creek Angling Services of Basalt, CO, the nation's largest flyfishing guide service.

Computers for Public Use: A Blessing, Not a Curse 1-4:00 p.m.

We will examine how to purchase hardware and software, analyze room requirements, service contracts, and liability issues. The session will also cover public and staff training, charges and use policies.

Improving Reference Service: A Training Model 1-4:00 p.m.

Lillie J. Dyson

Participants will review the unobtrusive survey technique used for the study and examine the model, provided for improving reference/information performance in public libraries.

Lillie J. Dyson is a public library consultant with the Maryland State Department of Education, Division of Library Development and Services in Baltimore. She is the author of, "Improving Reference Services: A Maryland Training Program Brings Positive Results," Public Libraries, Sept/Oct 1992.

Creative Conflict Management 1-4:00 p.m.

Dr. Beverly
Title

Conflict is an inevitable part of life. It can lead to constructive or destructive outcomes depending on how it is managed. In this session, we will explore the positive and negative attributes of conflict and consider a range of possible responses. Participants can expect to expand their thinking about conflict and to develop some new skills for dealing with conflicts.

Post-GPO Bibliographic Load Environment: Expectations, Quality Control, Workflows, Training 1-4:00 p.m.

Nora S.
Copeland
Fred C.
Schmidt

Learn proper sequence of planning and implementation of loads, expectations and benefits of loading GPO records online, quality assurance/quality control, workflow changes, training requirements, relationship with other departments.

Nora S. Copeland is Database Maintenance Librarian at Colorado State University. Fred S. Schmidt is Head of the Documents Department at CSU

.SPECIAL EVENT: Anderson Ranch Arts Center 1-4:00 p.m.

A tour through a rustic, working arts center is sure to delight all visitors! This nationally recognized arts center serves a broad spectrum of talent. Displays include unique crafts and fine arts in painting, drawing, ceramics, photography, woodworking, sculpture and printmaking. Some artists will be in residence.

SPECIAL EVENT: Exhibitor's Reception 4-6:00 p.m.

SPECIAL EVENT: Dinner in Snowmass Village 6-9:00 p.m. (On Your Own)

SPECIAL EVENT: Popcorn & Movie Social 8:00 p.m.-?

SPECIAL EXHIBIT: Silvertree Lobby All Weekend

Sponsored by
CLA Intellectual
Freedom
Committee

This is a display of written complaints about library material and copies of the library re-sponses. Your chance to see what the public hot buttons were in 1992.

Building Bridges

CLA/MPLA Joint Conference

Conference Schedule

Saturday, October 2

REGISTRATION 7:00 a.m.- 5:00 p.m.

BUFFET BREAKFAST 7-9:00 a.m.

KEYNOTE - Ivan Doig 9-9:50 a.m.

Ivan Doig was born in Montana in 1939 and grew up along the Rocky

Editor's apology:

I apologize to you and to the Conference Planning Committee for being unable to include the photographs of speakers.

I had to decide whether or not to include text or photos, and decided on the former. This conference should be one of the best ever. The Committee has done an extraordinary job.

Jim Dertien

Mountain Front where his trilogy of novels, Dancing at the Rascal Fair, English Creek, and Ride with Me, Mariah Montana takes place. His first book, This House of Sky, was nominated for the National Book Award in contemporary thought. Doig now lives in Seattle, where he has just completed a companion book to This House of Sky.

Turning Barriers into Bridges 10-11:50 a.m.

Kaycee Hale

Kaycee Hale is the founder and Executive Director of the world's largest network of educationally-affiliated fashion research centers which are located at the Fashion Institute of Design and Merchandising. With library locations in Los Angeles, Costa Mesa, San Francisco and San Diego, her administrative, educational, technical, and public relations skills have been put to the test in servicing an international clientele of the nation's fourth largest business - the apparel industry. Kaycee is also Chair of the Special Libraries Association Task Force on the Enhancement of the Image of the Librarian/Information Professional.

Trustee Toolbox (part 1) 10:11:50 p.m.

Katherine Brown

The format is truly that of a workshop - material is presented and discussed, and then problems are presented for resolution using the information contained in the extensive notebook, or "Toolbox," you will receive. The notebook includes sections on Board/Librarian responsibilities, meeting planning, personnel, library law, etc.

Katherine Brown is Director of Library Development at the Colorado State Library. Katherine has been a state library consultant, director of a multi-branch library and a library system director in Texas.

Tattered Cover Fall Preview-New Adult Books & Publishing Trends 10-10:50 a.m.

Beth Simons

Reader's Advisory is the librarian's trademark, but it is not always easy to keep up with the latest "insider" favorites. Hear the fall lineup presented from the bookstore that tries to be more like a library - The Tattered Cover.

Beth Simons has worked at the Tattered Cover for over seven years. She is currently the buyer of genre fiction. She loves to attend poetry readings and is learning sign language.

Story Hour Fun with the Story Time Handbook 10-10:50 a.m.

Deb Tuma

Out of ideas for your story hours? Webbing is a fun way to think of story time ideas. Deb will introduce new themes and share old favorites in connection with her book, **The Storytime Handbook**. Craft ideas and bibliographies included.

Deb Tuma is a Branch Supervisor at Lincoln City Libraries (NE).

Invisible Minority: Hispanics, Libraries & Life-Long Learning (part 1) 10- 11:50 p.m.

Dr. Camila Alire Orlando Archibeque

Ever heard of Iacocca: Autobiografia de un Triunfador or El Gato con Botas (Puss 'n Boots!)? There's more... Libraries have the greatest opportunity to serve Hispanics and prepare them for life-long learning/information skills which will help them make well-informed decisions. The program will include demographics of Hispanics in the region. Presenters will talk about topics/ideas such as non-library partnerships, community analysis/needs assessment, library outreach and Hispanic library materials. Most ideas are applicable to other multicultural populations.

A Colorado native, Camila Alire is currently Dean/Director of Auraria Library (UCD, CCD and MSCD Colleges). She is president-elect of ALA's REFORMA (National Association for Library Services to the Spanish-Speaking).

Orlando Archibeque is currently the Social Science Bibliographer at the Auraria Library. Orlando serves as the chair of the REFORMA Scholarship Committee.

Economic Development Information Centers 10-11:50 p.m.

**Nancy Welch
Tony Miele
Nancy Cummings**

The connection between a community's economic well-being and its library's status is obvious. But, few libraries consciously develop ways of supporting local economic development. Arizona's state library and many public and community college libraries have begun Economic Development Information Centers to be a part of the local economic development network. The seminar will focus on how libraries can be involved in economic development and what the experience of Arizona libraries has been. The panelists will also provide an overview of economic development, what it is and what the current trends in the field are. Nancy Welch is a Senior Research Specialist at Morrison Institute for Public Policy, Arizona State University. Nancy Cummings is from the Yuma County Library District. Tony Miele is Director, Library Extension Division, Arizona Department of Library, Archives & Public Records.

Quality, Speed and Access: Cataloging with all the Alternatives 10-10:50 a.m.

Speakers (T.B.A.) to present an overview of cataloging methods and which methods might be appropriate for a particular setting.

Best Children's Books of 1993 (so far) 10-10:50 a.m.

Beth Elder

An overview of the year's best books for children, this session will give lively, quick reviews of new favorites: picture books, folktales, non-fiction and fiction. Special emphasis will be placed on building multicultural collections, and on balancing core collection development with the need for high-demand popular materials. Beth Elder is the Children's Collection Specialist for the diverse Denver Public Library system.

Family literacy: A Holistic Perspective 10-10:50 a.m.

**Mary Willoughby
Debra Fawcett**

Family Literacy provides a holistic approach to learning. This workshop, a "how-to" for libraries interested in family learning, will begin with a demonstration of the importance of family learning. Besides identifying family literacy models appropriate for libraries, it will also give funding sources and provide family learning bibliographies in an interactive format.

Debra Fawcett is Librarian for the Colorado State Literacy Resource Center, Colorado Department of Education, State Library and Adult Education Office. Mary Willoughby is Program Manager of Colorado Literacy Action, State contact for Family Literacy, State Library and Adult Education Office, Colorado Department of Education.

Reaching Out to Day Care Providers 11:00 a.m.- 11:50 p.m.

Jean Hatfield

The Johnson County Library (KS) has developed thematic kits for use by providers of preschool, school-age and home care. The training in the use of the kits and the circulation is done through agencies that work with these providers.

Jean Hatfield is Youth Services Coordinator, Johnson County Library (KS).

Total Quality Management 10-10:50 a.m.

Larry Byrnes

Many problems in American higher education can be attributed to the lack of vision and insight of university administrators and faculty. Administrators without leadership skills generally yield to their fear of the unknown when confronted with change. Administrators and faculty can transform higher education by instituting total quality principles and processes.

Lawrence W. Byrnes, Director, Center for Teaching and Learning, University of Southern Colorado.

Reference Sources: What Price for Quality? 11:00 a.m.-12:50 p.m.

Dr. Gail Schlachter

The presentation will address issues of costs and quality. Why are reference books so expensive? What does it cost to produce accurate, timely reference sources? How can you tell if a title is overpriced?

Gail Schlachter is current president of Reference Service Press.

Commercial Document Delivery Services 11:00 a.m.- 11:50 p.m.

Mary Lou Goodyear

Can commercial document suppliers fill your users' needs? Scope of coverage, speed of delivery, quality of supplied documents, and cost all vary. How do you finally decide which to use? Mary Lou Goodyear will review criteria for selecting among the growing number of commercial databases which provide delivery options. She also will describe a pilot project which provides table of contents and article delivery service to a targeted audience at Texas A & M University.

Mary Lou Goodyear, Acting Director, Texas A & M University, Sterling C. Evans Library.

Colorado Literacy Update 11-11:50 a.m.

**Mary Willoughby
Debra Fawcett**

What do you know about national literacy legislation or Colorado's Certificates of Accomplishment? What are the implications for Colorado's libraries? In an interactive format, this workshop will identify trends, model library involvement and update resources.

Debra Fawcett: Librarian for the Colorado State Literacy Resource Center, Colorado Department of Education, State Library and Adult Education Office. Mary Willoughby: Program Manager of Colorado Literacy Action, State contact for Family Literacy, State Library and Adult Education Office, Colorado Department of Education.

Rip-Roaring Reads for Reluctant Teen Readers 11:00 a.m.- 11:50 p.m.

**Gale Sherman
Bette Ammon**

If you need help enticing those reluctant teenage types (those who can read but choose, for whatever reason, not to), this is the workshop for you. Sherman and Ammon are children's librarians who have written a book with recommended titles for middle school and senior high readers. They've selected contemporary books guaranteed to capture the interest of even the most formidable non-reader.

Gale Sherman is the early childhood librarian at Pocatello Public Library (ID). Bette Ammon is the young adult librarian at Missoula Public Library (MT). Together Ammon & Sherman own a small publishing company, Beyond Basics, Inc. They write and publish a yearly handbook for the Pacific Northwest's Young Reader's Choice Award. They've also written Rip-Roaring Reads for Reluctant Readers (Libraries Unlimited, 1993).

CLA/MPLA Awards Luncheon 12-1:50 p.m.

SPECIAL EVENT: Afternoon Hike 2:00 p.m.- 4:00 p.m.

Amendment 2 in Colorado: CLA Members Respond 2-3:50 p.m.

In November 1992 Colorado voters passed a constitutional amendment which prohibits state and local governments from enacting legislation to protect gays and lesbians. At its December 1992 meeting the Colorado Library Association Executive Board voted to hold its annual conferences only in counties which defeated Amendment 2. In February 1993 a general membership meeting was held to discuss the Board's action. A quorum was present and by a very narrow margin the Board's action was upheld. To clarify some of the positions taken by CLA members on our organization's reaction to Amendment 2 we revert to a tried-and-true method: the case study. An accurate and objective account of the events and situation will be prepared and sent to five pre selected reactors. They will each make a presentation explaining how they came to their conclusions. Questions from the audience will be welcome following the formal reactions.

Trustee Toolbox (part 2) 2:00 p.m.- 3:50 p.m.

Selecting Reference Sources in an Electronic Age 2-3:50 p.m.

**Dr. Gail
Schlachter**

Paper or CD-ROM? Online or print? The presentation will include a discussion of criteria for comparing format options and understanding the relationships between format and use patterns. Issues of costs and quality will also be addressed.

Invisible Minority: Hispanics, Libraries & Life-Long Learning (part 2) 2-3:50 p.m.

Raising Money for Libraries in the '90s 2-3:50 p.m.

**Suzanne
Walters**

Fund raising for non profits is going to be more challenging in the '90's as the competition for a shrinking pool of resources becomes fierce. Learn what every library director and administrator needs to know to position their library for funding whether it be a bond issue, foundation funding or a grass roots community fund drive. Learn how libraries have an advantage over other community organizations when it comes to fund raising.

Suzanne Walters is senior consultant with the international fund raising/consulting firm, Staley, Robeson, Ryan, St. Lawrence. In her role as the first Marketing Director in a major U.S. public library, she developed the marketing strategies that repositioned the Denver Public Library from have-not to public champion in a \$91 million bond issue. Sue has won national awards for marketing and public relations and is the author of Marketing for Libraries.

Denver Freenet 2-3:50 p.m.

**Drew Mirgue
Diane Skiba
Marla Graber**

Get in from the ground up on to Denver Freenet, a community computing system. The Project Director, Administrator and contributing Librarian will discuss and demonstrate this database of community information.

Coping with Your Environment 2-3:50 p.m.

**Karen Jones
Sara R.
Williams**

The basics of a preservation program is an understanding of the library environment and how it affects the library collections, staff and patrons. This program will present the elements of environmental control, their importance, standards, and how to begin environmental monitoring.

Karen Jones is Preservation Officer, Jefferson County Public Library (CO). Sara R. Williams is Preservation Librarian, University of Colorado at Boulder.

Multicultural Storytelling: A Bridge Across the World 2-3:50 p.m.

**Heather McNeil
Cromer**

Storytelling can open windows into new worlds, allowing the teller and the listeners to explore and understand other cultures. Professional storyteller and children's librarian Heather McNeil Cromer will discuss what's right - and wrong - about multicultural storytelling. Heather will tell stories from several different countries and offer tips on how to research stories, as well as discuss the myriad of opinions among storytellers about telling stories from outside your own culture.

Heather McNeil Cromer is a third-generation storyteller, following the tradition of her grandfather and mother. Head of Youth Services at the Edwin A. Bemis Public Library in Littleton, CO. Her book, Hycna and the Moon: Stories to Tell from Kenya will be published by Libraries Unlimited in the fall of 1993.

Bringing Up Baby in the Library: Infant Programming for the Public and Teen Parents

2-3:50 p.m.

**Bette Ammon
Gale Sherman**

We know babies are "born to read" but some folk need convincing. Here's a soup to nuts overview of establishing an infant program in the library. See an actual program on videotape. Gather ideas, book lists, and more! Presenters will also provide information on doing a similar program for teen parents. Bring your blankets and settle in for a grand time.

Gale Sherman is the early childhood librarian at Pocatello Public Library (ID). As a consultant for Regent Book, Sherman develops book lists for infant and toddler book collections. Bette Ammon is the young adult librarian at Missoula Public Library (MT).

From Traditional Continuing Education to Fiber Optics: Two-Way Video 2-3:50 p.m.

**Jane Hatch
Rosanne Goble
Dorothy Liegl
Jane Smith**

Panel discussion of model continuing education activities in three MPLA states. Presenters will highlight successful continuing education for one library or librarians from all parts of a state. Applications of new technologies such as distance learning with fiber optics, as well as traditional continuing education will be discussed. Sample continuing education programs that could be replicated will be included.

Taste of Snowmass Village Dinner 6-7:30 p.m.

SPECUL EVENT: CLEF Comedy Cabaret 7-8:30 p.m.

Edith Weiss

Relax and unwind after a full day of meetings. CLEF will host a "comedy cabaret" featuring two performers. Edith Weiss is a nationally known comedian and performs often at McKelvey's Comedy Club in Denver. Annette Choszyk will open the show by singing traditional Scottish ballads. Tickets are \$7.50 and are available at the door. Your donation is tax deductible and benefits the Colorado Library Educational Foundation Minority scholarship and rural librarians travel grant.

SPECIAL EVENT: Country and Western Dancing 9:00 p.m.- ?

Sunday, October 3

BUFFET BREAKFAST 7- 9:00 a.m.

Morning Hike 8- 10 :00 a.m.

Intellectual Freedom: Why It is Important to Every Library User 7-8:50 a.m.

Dr. Jerry Weiss

What are the issues which lead would-be censors to go into action? Who are the censors? What do schools and libraries need to know to help prevent censorship? What resources are available to help?

Dr. Jerry Weiss holds the title of Distinguished Service Professor of Communications at Jersey City State College (NJ). He is currently a member of NCTE - IRA Joint Task Force on Censorship and the NCTE Committee Against Censorship.

Image Makers as Risk Takers 7- 8:50 a.m.

**Mildred Pitts
Walter**

Mildred Pitts Walter will be talking about writers who are risk takers willing to create characters who are on the narrow edge confronting problems, making difficult choices, and building bridges to span differences. She will mention her books: Girl on the Outside, Ty's One-Man-Band, Trouble s Child, and Mississippi Challenge in the presentation.

CLA Centennial Committee Reunion 8- 8:50 a.m.

Members and friends of the 1992 Centennial Committee are invited to an informal reunion to celebrate the successful celebration of CLA's 100th anniversary. One last chance to wear your anniversary sweatshirt!

KEYNOTE- Gary Strong, Confronting Our Fiscal Future 9:-9:50 a.m.

Mr. Strong will discuss the impact of voter initiatives on state government spending - specifically Proposition 13 in California. He will cover the impact it had on libraries since the implementation and how they have adjusted (or not) in that environment Strategies to strengthen libraries positions in states that are considering tax limitations will be explored.

Gary E. Strong was appointed California State Librarian by Governor Edmund G. Brown, Jr. in 1980 and reappointed by Governor George Deukmejian in 1984.

SPECIAL EVENT: Authors Row 11:00 a.m.-2:00 p.m.

Back by popular demand! Several selected authors, including regional book award winners, will be available to sign copies of their books and talk to conference participants.

Confronting Our Fiscal Future - Panel Discussion 11- 11:50 a.m.

Panelists: Gary Strong Eloise Fasold, Director, Arapahoe Library District (CO); Deborah Schlesinger, Director, Lewis and Clark Public Library, Helena (MT)

Implementing Change as a Middle Manager 11-11:50 a.m.

Jean Hatfield

Ready to embark on a roller coaster ride of change with a staff who would rather stay on the merry-go-round. Tips from the trenches of middle management.
Jean Hatfield is Youth Services Coordinator for Johnson County Library, Shawnee Mission.

Correctional Facilities 11- 11:50 a.m.

Oreda Mitchen Oreda Mitchell is Library Director for Four Mile Correctional Center in Canon City (CO).

Dewey Detectives - Teaching Kids to Use the Library 11:00 a.m.- 11:50 a.m.

**Jan Sanders
Beth DeGeer**

The Dewey Detectives is an exciting program for kids aged 8 to 12. The program is designed to expose participants to a variety of books and reference materials.
Jan Sanders is library director for the Bartlesville (OK) Public Library and History Museum. Beth DeGeer is Children's Services Librarian for the Bartlesville (OK) Public Library.

Who Me? Sexual Harassment in the Workplace 11- 11:50 a.m.

**Teri Switzer
Beth Fuseler**

In this "must attend" session, definitions, myths, facts, and tips on developing a sexual harassment policy will be given.
Beth Fuseler is Sciences/Technology Department Head, Colorado State University Libraries. Teri Switzer is Personnel Librarian, Colorado State University Libraries.

MPLA Academic Research Forum 11-12:50 a.m.

How to Keep Your Job in School Library Media: Cooperative Planning, Teaching & Evaluation 11-11:50 a.m.

**Lynda Welborn
Jody Gehring**

How to integrate the school library media program into the curriculum through cooperative planning with teachers, teaching information skills, and evaluating and assessing student progress.
Lynda Welborn is School Library Media Consultant with Colorado State Library. Jody Gehring is Director of School Library Media for Denver Public Schools.

Ethics & Etiquette of Networks Navigating 11-11:50 a.m.

Nancy Szofran

In academic settings it is very often the librarian to whom staff and students turn for their initiation to the network. Learning how to use a system correctly and to its full potential involves more than mere mechanics.
Nancy C. Szofran is System Administrator of Eastern Montana College Library, Billings Montana.

Writing Effective Book Annotations: Building Bridges to Readers 11-11:50 a.m.

**Maureen
Crocker
Loren Tabor**

Skills needed for reader's advisory work are many and varied, but one that is especially important is writing book annotations that attract readers to books.
Maureen Crocker has been with the Colorado State Library for over 7 years as Public Library Consultant. Loren Tabor has worked at the Denver Public Library for over 22 years. Currently she manages a cluster of branch libraries.

Meet Your Lobbyist 12- 12:50 p.m.

**Flo Mendez
Fofi Mendez**

Flo Mendez, President of Mountain Legislative Consulting Services, has been an established lobbyist in Colorado for over 15 years. She was recently mentioned in a Denver Business Journal article on lobbyists as one of the "heavy hitters." Fofi Mendez has recently joined MLCS after ten years of work with social service organizations such as the Rape Assistance and Awareness Program.

International Reference Sources, Part I- European Community 12-12:50 p.m.

Barbara Sloan

This program will provide an overview of the European Community and its various institutions, focusing on the information sources, statistics & resources available to libraries.

Barbara Sloan is head of Public Inquires, Delegation of the Commission of the European Communities in Washington D.C.

The Section Connection 12-1:50 p.m.

An informal gathering of the sections within TSAD to network - over lunch, for those who wish. The topics to be discussed: hybrid formats from ordering to shelving; organization of serials functions; acquisitions: "Where does it begin and end?"

Opening the Closet Door: Confronting the Gay Issue in YA Library Service 12-1:50 p.m.

Susan Booker

Helma Hawkins

Like other prejudices, homophobia affects people's lives in painfully limiting ways. By addressing the information needs of gay teens and teens with gay friends and/or family members, librarians can make an important difference in the lives of this "invisible" and often forgotten minority group.

Helma Hawkins has worked in libraries since 1983 and is currently Head of Children's Services at a metropolitan library. Susan Booker has been a librarian since 1980, working in positions ranging from library director, to her favorite and current capacity as children's librarian.

Making Collaboration Work- Denver's Museum Libraries Cooperative 12-1:50 p.m.

Katherine Kane

Katherine Gully

Deborah Byrne

Four libraries in cultural institutions cooperatively developed a serials cataloging project which was funded by LSCA. The Colorado Historical Society, Denver Museum of Natural History, Denver Botanic Gardens and the Denver Art Museum each have special collections which reflect their missions.

CLA/MPLA Trustees & Friends Brown Bag Networking Luncheon 12-1:50 p.m.

1994 Summer Reading Program - Where has 1993 Gone? 12-1:50p.m.

Barb Schneller

Discussion will focus on 1994 and what we can do to make it a dynamic year. Barb Schneller is from Aurora Public Library (CO).

Enliven Your Library 1-1:50 p.m.

Kathleen June

Anxious about doing more with less? Stumped on how to keep up and improve quality services? The key to answering these perplexing questions is to pay more attention to your people. By focusing on what your excellent staff does well, you learn how to help them motivate themselves. Continuous improvement becomes a pattern your staff can replicate in every aspect of their work. An interactive, energizing session.

Kathleen June is President, Vitale Training & Consulting.

International Reference Sources, Part II -Latin America/Asia/Pacific 1-1:50 p.m.

Yolanda

Maloney

Martha Jo Sani

Reference sources can be expensive, especially in times of tight money. An attempt will be made to select resources that cost less without compromising quality. Yolanda Maloney and Martha Jo Sani are Business Librarians at the University of Colorado in Boulder.

Resource Sharing Strategic Planning Committee 1-1:50 p.m.

After two years of work input, study meetings, discussion, and drafting, the Plan is ready for implementation.

Colorado Library Card Users Group 1-1:50 p.m.

Informal discussions and sharing session on how the Colorado Library Card (CLC) is working in Colorado. Bring questions, ideas, and discuss the CLC with other Colorado librarians.

Meriweather Lewis - Presented by Clay Jenkinson 2-3:50 p.m.

MARC Format Integration 2-2:50 p.m.

Gretchen

Redfield

MARC Format Integration is tentatively scheduled for the first quarter of 1994. Libraries need to examine how the changes will affect staff, library procedures and operations, local systems, and national utilities.

Gretchen has worked with the MARC Format for 15 years, including chairing the committee (MARBI) within the American Library Association that approves changes to that standard.

GIS - Is It for You? 2-3:50 p.m.

Suzanne Taylor

GIS (Geographical Information System) is part of the next wave of patron expectation. Fueled by the publicity for the Census TIGER files, patrons, businesses, and government agencies now want custom mapping to meet their specific needs.

The Association of Research Libraries has a GIS Computer Literacy program to train participants to teach other librarians the skills to provide GIS services. Suzanne Taylor, Colorado State University Documents Librarian with a specialty in mapping, is one of the participants in the ARL program. Jefferson County Public Library is currently offering patron access to County Assessor's records and working on a program to access the Mapping Department computer.

Standards/Outcome-Based Education Users Group 2-2:50 p.m.

Deborah Kirk

Standards/Outcomes-Based Education (SIOBE) is being implemented in numerous schools in Colorado. Information skills (formerly known as library skills) instruction is affected by SIOBE. If you're implementing SIOBE in your school library media center, come to this session and share your e~perience or get ideas from others.

Deborah Kirk is the library media coordinator for Weld County School District 6 (CO).

The Conspectus: More than a Decade of Practice 2-3:50 p.m.

**Mary Bushing
Burns Davis
Sally Lokin**

Presentations will focus on the practical application of the conspectus methodologies in all types of libraries - academic, public, special and school.

Mary Bushing is Head of Collection Development at Montana State University, Conspectus trainer and author. Burns Davis is Information Resources Librarian, Nebraska Library Commission and Conspectus Coordinator for Nebraska. Sally Loken is the WLN Collection Assessment Services Librarian.

Public Library and School Cooperation: More than You Have, We Need 2-3:50 p.m.

**Lynda Welborn
Judy Gehrig**

A look at what's happening with school/public library cooperation in the nation, region and locally. Judy Gehrig is Director of School Library Media, Denver Public Schools.

Filthy Rich and Other Nonprofit Fantasies 2-1:50 p.m.

**Dr. Richard
Steckel**

Dr. Richard Steckel, who makes his home in Denver, is the author of two books: *Filthy Rich and Other Non-Profit Fantasies: Changing the Way Nonprofits Do Business in the 90's.* and *Doing Best by Doing Good: How to Use Public Purpose Partnerships to Boost Corporate Profits and Benefit Your Community.* Dr. Steckel will discuss the reality of functioning as a public or non-profit agency in the age of budget cuts and Amendment 1.

Alternative Careers for Librarians 2-3:50 p.m.

**Wanda
McDavid**

Librarians who are interested in applying their skills and knowledge to other fields of interest or find themselves out of a job may learn that there are other careers.

African-American Books for Children and Young Adults 2- 2:50 p.m.

Clara VillaRosa

Experience a presentation of the best books from the African-American perspective. Clara VillaRosa is the owner of the Hue-Man Experience, the largest African-American bookstore in the United States.

Best Books for Young Adults 3-3:50 p.m.

**Lynda Welborn
Nancy Knepel**

A lighthearted look at some of the best books published for young adults during 1992-1993. These are books kids will read and enjoy. Lynda Welborn is School Library Media Consultant, Colorado State Library. Nancy Knepel is Director, High Plains Library System (CO).

SPECIAL EVENT: Night Out in Aspen 6:00 p.m.- ?

SPECIAL EVENT: All-Conference Reception 6-7:30 p.m.

Pitkin County Public Library, Aspen

Begin your night out in Aspen at the lovely new Pitkin County Public Library at the municipal complex in downtown Aspen. You will be greeted inside with the sounds of live music, the cheerful clinking of glasses and a variety of snacks to sample. Be sure to ask for a demonstration of CARL's innovative new Kid's Catalog.

SPECIAL EVENT: Aspen Gallery Walk 6-9:00 p.m.

Explore the treasures of some of Aspen's many art galleries! Several art galleries will open their doors for a special "after hours" showing just for CLA/MPLA members and guests. The collections offer a dazzling array of fine arts and crafts in a wide range of styles (and prices). A feast for your eyes before you dine at one of Aspen's many fine restaurants!

Monday, October 4

The Adult-Child Connection: Extending Your Program into the Community 8-8:50 a.m.

**Jean Hatfield
Janet Norrod
Deb Tuma**

A panel presentation on the advantages of networking with other people who work with children, specific programs and services that can be easily adopted, and ideas on how to extend material and services of the library beyond the facility. The primary focus will be on programs and support services directed toward parents, teachers and other adults who work with children to broaden the opportunities for sharing library services throughout the community.

Jean Hatfield is Youth Services Coordinator for Johnson County Library, Shawnee Mission, Kansas. Janet Norrod is Manager, Children's Services, Laramie County Library System (WY). Janet has taught a "Literature for Children" class at the local community college for 10 years. Deb Tuma is a Branch Supervisor at Lincoln City Libraries (NE).

Continuing Education: The Library Director's Perspective 8-9:50 a.m.

A panel of library directors representing both public and academic libraries will discuss their current continuing education programs and future needs with an emphasis on how to provide continuing education opportunities within a context of shrinking financial resources for most libraries.

BCR Networking Update 9-9:50 a.m.

**David Brunell
Gretchen
Redfield**

Speakers will address the latest developments in OCLC, EPIC, PRISM, FirstSearch, CD ROM databases, microcomputers, cataloging services, and more.

Dave Brunell is Executive Director, Bibliographical Center for Research. Gretchen Redfield is Manager, Bibliographical Systems & Services, Bibliographical Center for Research.

Janet Stevens - A Visit with an Illustrator 9-9:50 a.m.

Janet Stevens

Meet one of Colorado's notable illustrators, Janet Stevens. From The Three Bears to The Tortoise and the Hare. Janet has brought a touch of humor and comfort to beloved folk tales. Janet will share the inside story to some of her favorite characters as only a Boulder artist can share.

Management by Climbing Around: Experiential Learning 9-9:50 a.m.

**Joan Chambers
Teri Switzer**

Adventure-Based learning options such as Ropes Courses have been receiving increased attention. As a vehicle for creative team spirit and cooperation, experiential learning provides a good mix of safety, excitement, and collegiality to ensure a fun-filled beneficial experience.

Joan Chambers, Director of Colorado State University Libraries and Teri Switzer, Personnel Librarian at Colorado State University Libraries, are career librarians who explore non-traditional approaches to organizational management and enjoy climbing around on ropes as well as library step-stools.

Colorado Library Card: Statewide Multi-type Walk-in Resource Sharing 9-9:50 a.m.

Librarians from five types of libraries will describe how Colorado developed a state-wide program for library patrons to be able to walk-in and borrow materials from any type of library participating in the program. Packets of information will be available to attendees.

KEYNOTE BRUNCH Thomas Jefferson Presented by Clay Jenkinson 10:00 a.m.- 12:00 p.m.

SPECIAL EVENT: Aspen Historical Tour 1-3:00 p.m.

History of Snowmass

Snowmass Village exists on what was once beautifully serene ranch land. In the 1950's, William Janss, a former ski racer, flier, art collector, and huge land developer from Los Angeles, became interested in the land around Aspen. Janss, along with his brother, Ed, began buying property in the Snowmass area and soon filed an application with the Forest Service for special use of the area.

In 1964, the Forest Service gave Janss Investment Corporation a conditional use permit. In 1965, the Forest Service gave the go ahead for development. The Janss group then teamed up with the Aspen Skiing Company to launch Snowmass-at-Aspen, and in 1966, they joined up with the American Cement Corporation of Los Angeles as equal partners in the project.

On December 17, 1967, the area officially opened. Approximately \$10 million had been invested in the West Village, which included 5 lodges, 120 condominium units, a dozen private homes, a small conference center, a movie theater, 4 heated swimming pools, 21 shops and 6 restaurants.

Janss promoted Snowmass-at-Aspen as the "most carefully planned ski resort in the world," with its 50 miles of manicured trails, 5 chair lifts, and a compact pedestrian village to "bring people out of the city atmosphere."

Today Snowmass continues to develop along the guidelines and vision set by Janss. In 1992, Snowmass boasts 3,000 acres of skiing, with three Quad Super Chairs, 2 triple chairs, 9 double chairs, and two platterpulls. Snowmass Village has accommodations for over 7,000 guests, a premier 35,000 square foot conference center, 87 shops and restaurants in a new Village Mall area, and 40 pools and hot tubs for our guests to enjoy. Snowmass is a fully incorporated town that stands by itself as a world-class, year-round resort while still retaining its charming mountain atmosphere.

Special Events

Friday, October 1

Anderson Ranch Arts Center. 1:00 p.m. -4:00 p.m.

Popcorn & Movie Social. 8:00 p.m.- ?

Saturday, Oct. 2

Afternoon Hike 2:00-4:00 p.m.

CLEF Silent Auction 4:00-4:45 p.m.

CLEF Comedy Cabaret 7:30-8:30 p.m.

Country and Western Dancing 9:00 p.m. - ?

Sunday, Oct. 3

Morning Hike 8-10:00 a.m.

CLEF Silent Auction (continued) 10-11:00 a.m.

Authors Row 11:00 a.m.-2:00 p.m.

All-Conference Reception 6-7:30 p.m.

Pitkin County Public Library

Aspen Gallery Walk 6-9:00 p.m.

Self-guided walk in downtown Aspen

Monday, Oct. 4

Aspen Historical Tour 1-3:00 p.m.

1994-95 Nominees for MPLA Offices

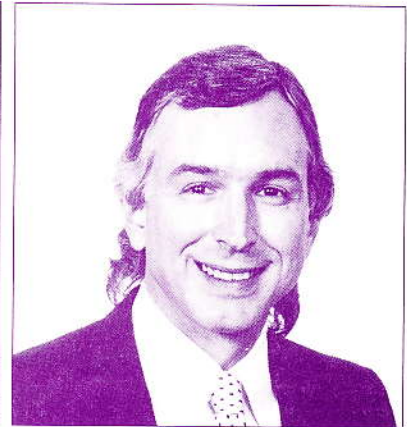
Ballots for the election will include biographies and position statements will be provided separate from the newsletter.

Vice President/President Elect

Blaine H. Hall, Brigham Young
University, Provo, UT
Stephen C. Skidmore, Ponca City
Library, Ponca, OK



Blaine H. Hall



Stephen C. Skidmore

Recording Secretary

Heather McNeil Cromer, Edwin A.
Bemis Public Library, Littleton, CO
Elizabeth Parang, University of Ne-
vada, Las Vegas, NV

Academic Section

Vice Chair/Chair Elect

Deborah Hagemeyer, Augustana College, Sioux Falls,
SD
Anne McKee, Arizona State University West Campus,
Phoenix, AZ
Jim McPhee, University of Nevada Las Vegas, NV

Secretary-Treasurer

Katherine L. Rankin, University of Nevada, Las Vegas,
NV
Louise Stwalley, Auraria Library, University of
Colorado at Denver

Technical Services Section

Chair

Lois Schneberger, Arizona State University, Tempe,
AZ

Secretary

Carolyn W. Myers, University of Nevada, Las Vegas,
NV

State Agencies, Cooperatives and Systems Section

Chair

Ed Volz, Colorado State Library, Denver, CO
Beth Hager, High Plains Regional Library Service
System, Greeley, CO

Secretary

Diana L. Baker, Nevada State Library and Archives,
Carson City, NV
Judy Yeo, Wyoming State Library, Cheyenne, WY

Public Libraries and Trustees Section

Vice Chair/Chair Elect

Lucie Osborn, Laramie County Library System,
Cheyenne, WY

Sandra Kay Long, Utah State Library

Secretary

Jane Larson, Vermillion Public Library, Vermillion,
SD
Douglas Murdock, Sioux Falls Public Library, Sioux
Falls, SD

New Members Round Table Section

Vice Chair/Chair Elect

Metta Nicewarner, University of Nevada, Las Vegas,
NV
Sally Dockter, University of North Dakota, Grand
Forks, ND

Secretary

Joan Beam, Colorado State University, Fort Collins,
CO

Children's and School Section

Vice Chair/Chair Elect

Jean Hatfield, Johnson County Library, Shawnee
Mission, KS
Deb Tuma, Lincoln City Libraries, Lincoln, NE

Secretary

Linda Deacy, Douglas County Public Library, Minda
NV
Elaine Warner, Oklahoma State University, Oklahoma
City, OK

Preservation Section

Chair

Blanche Clegg, Southern Utah University, Cedar City,
UT
Diane W. Martin, Northwest College, Powell, WY

Secretary

Martha Hanscom, University of Wyoming, Laramie,
WY

Government Documents Round Table Section

Vice Chair/Chair Elect

Maggie Parhamovich, University of Nevada, Las
Vegas, NV

Secretary

Janita Jobe, University of Nevada, Reno, NV

MPLA an Association that works for you

When considering membership in an Association, you naturally ask, "What will it do for me?"
When you join MPLA, we say, "What can we do for you?"

Members of the Mountain Plains Library Association can tell you it is one Association that places member needs first, with outstanding results.

MPLA offer members

- Information exchanges and educational programs on technological developments and innovative library programming undertaken by MPLA libraries;
- Professional Development Grants to members for coursework, institutes and workshops, and independent study;
- Preconference Grants to member state associations to provide special educational opportunities for members and others;
- Through its newsletter, information about continuing education available throughout the region and information about outstanding library programs through news and feature articles;
- Support of regional bibliographic efforts;
- Joint annual conferences with member states providing a marketplace of ideas where one individual's experience and talent can be shared with other librarians and where members can meet national leaders in the profession;
- Recognition of outstanding contributions to local, state and regional library services;
- Publication of an annual report and membership directory;
- Access to JOBLINE, a telephone-accessed listing of current job vacancies in our region;
- Special Project Grants, to fund research on ways to develop and improve library services;
- Opportunities to be involved with type of service sections and interest groups, working closely with people who share your common concerns.
- An opportunity for members to contribute to their profession.

MPLA

is an eleven-state regional association of libraries and friends of libraries in Arizona, Colorado, Kansas, Montana, Nebraska, Nevada, North Dakota, Oklahoma, South Dakota, Utah and Wyoming, with a primary purpose of improving present and future library services in the Mountain Plains regional through development of librarians, trustees, and library employees.

MPLA

bases its success on an active, enthusiastic, sharing membership. Where our people are so few and distances so great, each librarian and each library is a vital resource to be shared.

MPLA

invites you to make an investment in your future by joining us, and laying the foundation for your career development. And participating with MPLA's present membership — all active leaders in our region's outstanding libraries.

CLA/MPLA Joint Conference, Snowmass at Aspen

Registration, Oct. 1-4, 1993

Please print or type

Name _____ Institution _____
(As it will appear on Name Tag)

Additional name tags _____

Mailing Address _____

City _____ State _____ Zip _____

(H) Phone _____ (W) Phone _____ Fax _____

Check organization(s) of which you are currently a member: CLA MPLA Both Other _____
 Members of CEMA, CCML, COALL and Rocky Mountain Chapter SLA are eligible for member rate.
 If ADA assistance needed or any questions - Call (719) 549-2386 by August 31st.

Pre-Conference Registration - October 1, 1993

Events occur simultaneously - Lunch is included for all preconferences Vegetarian

\$55 Full Day/Check only one	\$35 p.m. Sessions only/Check only one	Subtotal _____
<input type="checkbox"/> Reader's Advisory/Improving Reference Services	<input type="checkbox"/> Help: Librarian's Guide to Public	
<input type="checkbox"/> Learning Styles/Creative Conflict Management	Computer Operation	
<input type="checkbox"/> Picking Up the Pieces	<input type="checkbox"/> Post GPO	
<input type="checkbox"/> Serials - Selecting a Vendor	\$110 Full Day	
<input type="checkbox"/> Output Measures for Children's Services	<input type="checkbox"/> Flailing the Line (fly fishing trip)	

Single Day Registration Sat Sun Mon Subtotal _____

	Early Discount	After August 31, 1993
All registrants	\$30	\$45

Full Conference Registration October 2 thru 4, 1993

	Early Discount	After August 31, 1993	
<input type="checkbox"/> Member	\$50	\$65	
<input type="checkbox"/> Non-Member	\$75	\$90	
<input type="checkbox"/> Library/Media Student Volunteer	\$20	\$35	
<input type="checkbox"/> Retired CLA Member, Trustee, Friend	\$20	\$35	Subtotal _____

Meals/Special Events Registration

Saturday	<input type="checkbox"/> Breakfast Buffet	\$9	Quantity _____
	<input type="checkbox"/> Awards Luncheon	\$21	Quantity _____
	<input type="checkbox"/> Taste of Snowmass Village Dinner Coupons	\$12	Quantity _____
	<input type="checkbox"/> CLEF Comedy Cabaret	\$7.50	Quantity _____
Sunday	<input type="checkbox"/> Breakfast Buffet	\$9	Quantity _____
	<input type="checkbox"/> Box Lunch Express (select option below)	\$9	Quantity _____
	<input type="checkbox"/> Ham <input type="checkbox"/> Turkey <input type="checkbox"/> Roast Beef <input type="checkbox"/> Vegetarian		
Monday	<input type="checkbox"/> Brunch Buffet (Keynote Speaker)	\$16	Quantity _____
	<input type="checkbox"/> Aspen Historical Society Tour	\$5	Quantity _____
	<input type="checkbox"/> CLA/MPLA Commemorative T-shirt \$5.00		<input type="checkbox"/> S _____ <input type="checkbox"/> M _____ <input type="checkbox"/> L _____ <input type="checkbox"/> XL _____
			Subtotal _____

T-Shirt cannot be ordered AFTER August 31, 1993

Form of Payment Early Discount/registration must be received by August 31, 1993 **Grand Total** _____

Check (Make payable to Colorado Library Association) Visa MasterCard

Card Number _____ Exp. Date _____ Signature _____

No refunds after August 31st. Refunds are subject to a \$5 service charge. If you need a receipt or confirmation, please include a self addressed stamped envelope with your registration.
 Return this form with payment to Colorado Library Association P.O. Box 489, Pinecliffe, CO 80471



MPLA Newsletter
414 E. Clark
c/o Univ. of South Dakota Libraries
Vermillion, SD 57069

Bulk Rate
Non-profit Org.
U.S. Postage Paid
Permit No. 63
Vermillion, SD 57069

- Opportunities for professional involvement
- Continuing education programs
- A forum for the exchange of ideas
- Professional Development Grants
- Support of regional library efforts
- News of people and programs in member states

COMPLIMENTARY COPY

Special 1/2-Price New Member Offer

This newsletter contains an insert offering you an opportunity to give MPLA a try—at half the price of our regular annual rate.

If the insert is missing, please call or write:

Joe Edelen
MPLA Executive Secretary
I.D. Weeks Library
University of South Dakota
Vermillion, SD 57069
800-356-7820 or 605-677-6082

Professional Development Assistance

Seminars
Institutes
Workshops
Coursework
Conferences
Independent Learning/Research Projects

Association members are encouraged to apply for grants, mini-grants, and international grants, all of which may be used for the following: formal college or university classroom work, independent study programs, attendance at workshops, conferences or seminars, or participation in any other activity that will benefit libraries and the library community in our region. (Members are eligible after one full year of membership.)

For more information see your Membership Information brochure or write: Joseph R. Edelen, Jr., MPLA Executive Secretary, c/o I.D. Weeks Library, University of South Dakota, Vermillion, SD 57069. 605/677-6082.

1993 Applications Deadlines:

July 9

September 17

November 5